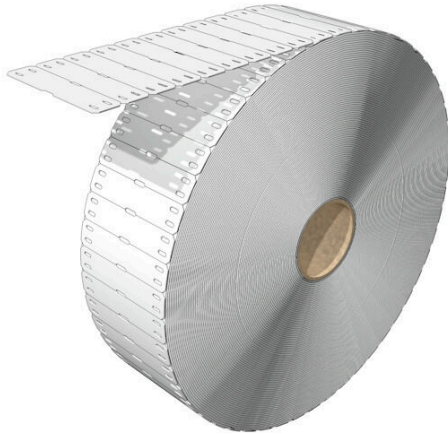


SFX 11/60 MM BP WS

Weidmüller Interface GmbH & Co. KG
Klingenbergstraße 26
D-32758 Detmold
Germany

www.weidmueller.com

**Highly flexible: SFX**

SFX markers are the preferred choice for labelling cables if you prefer the classic cable tie solution. Cables do not always run in a straight line. The material used in SFX markers addresses this fact with highly flexible polyurethane. The marker follows each curve of the cable and latches on with ease.

General ordering data

Version	SlimFix, Conductor and cable markers, 7 - 40 mm, 60 x 13 mm, white
Order No.	2712110000
Type	SFX 11/60 MM BP WS
GTIN (EAN)	4050118749823
Qty.	6000 items

SFX 11/60 MM BP WS

Weidmüller Interface GmbH & Co. KG
 Klingenbergstraße 26
 D-32758 Detmold
 Germany

www.weidmueller.com

Technical data

Approvals

ROHS	Conform
------	---------

Dimensions and weights

Depth	0.6 mm	Depth (inches)	0.0236 inch
Height	60 mm	Height (inches)	2.3622 inch
Width	13 mm	Width (inches)	0.5118 inch
Net weight	0.55 g		

Temperatures

Operating temperature range	-40...90 °C
-----------------------------	-------------

Environmental Product Compliance

RoHS Compliance Status	Compliant without exemption
REACH SVHC	No SVHC above 0.1 wt%

General data

Type of printing	neutral	Version	halogen-free
Width	13 mm	UL 94 flammability rating	HB
Operating temperature range, max.	90 °C	Operating temperature range, min.	-40 °C
Colour	white	Halogen	No
Basic material	Polyurethane	Printed characters	without
Size of labelling field	44 x 10.5 mm	compatible printer	THM MULTIMARK , THM MULTIMARK PLUS
Operating temperature range	-40...90 °C	Number per roll	1000

Conductor and cable markers

Halogen	No	Conductor cross-section, max.	500 mm ²
Conductor cross-section, min.	16 mm ²	Conductor O.D., max.	40 mm
Conductor O.D., min.	7 mm	Text field width	44 mm
Cable tie passage	Flat	Text field height	10.5 mm
Conductor O.D.	7 - 40 mm	Suitable cable tie	Plastic
Cross-section for connected wire	16 - 500 mm ²		

Classifications

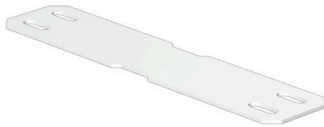
ETIM 8.0	EC001530	ETIM 9.0	EC001530
ETIM 10.0	EC001530	ECLASS 14.0	27-28-11-02
ECLASS 15.0	27-28-11-02		

SFX 11/60 MM BP WS

Weidmüller Interface GmbH & Co. KG
Klingenbergstraße 26
D-32758 Detmold
Germany

www.weidmueller.com

Drawings



SFX 11/60 MM BP WS

Weidmüller Interface GmbH & Co. KG
 Klingenbergstraße 26
 D-32758 Detmold
 Germany

www.weidmueller.com

Accessories

Ink ribbons



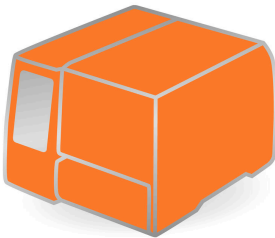
These printers produce excellent printing results thanks to the thermal transfer technique. Different materials and the user-friendly printing system under Windows optimise marking efforts.

General ordering data

Type	RIBBON MM 76/360 SW	Version	
Order No.	2005080000	Ink ribbon	
GTIN (EAN)	4050118389951		
Qty.	1 ST		

Type	RIBBON MM 110/360 SW	Version	
Order No.	2005070000	Ink ribbon	
GTIN (EAN)	4050118390049		
Qty.	1 ST		

THM MULTIMARK



These printers produce excellent printing results thanks to the thermal transfer technique. Different materials and the user-friendly printing system under Windows optimise marking efforts.

General ordering data

Type	THM MMP EXT.RH	Version	
Order No.	1302920000		
GTIN (EAN)	4050118102307		
Qty.	1 ST		