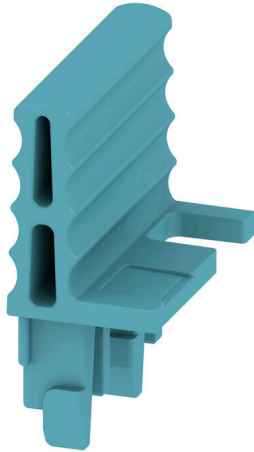


**LL TTB 6/2 BL****Weidmüller Interface GmbH & Co. KG**

Klingenbergstraße 26

D-32758 Detmold

Germany

[www.weidmueller.com](http://www.weidmueller.com)

The comprehensive accessories of the Klippon® Connect TTB-Range are perfectly matched down to the last detail. This facilitates mounting while adhering to required norms. All function- and safety-relevant components are captively connected to the terminal block. This increases the reliability of the current and voltage transformer circuits during installation and maintenance work.

**General ordering data**

Version	Locking lever (terminal)
Order No.	<a href="#">2710310000</a>
Type	LL TTB 6/2 BL
GTIN (EAN)	4050118848250
Qty.	50 items

## LL TTB 6/2 BL

**Weidmüller Interface GmbH & Co. KG**  
 Klingenbergstraße 26  
 D-32758 Detmold  
 Germany

www.weidmueller.com

## Technical data

### Approvals

ROHS	Conform
------	---------

### Dimensions and weights

Depth	8.2 mm	Depth (inches)	0.3228 inch
Height	19.7 mm	Height (inches)	0.7756 inch
Width	15.7 mm	Width (inches)	0.6181 inch
Net weight	0.91 g		

### Temperatures

Storage temperature	-25 °C...55 °C	Ambient temperature	-60 °C...85 °C
Continuous operating temp., min.	-60 °C	Continuous operating temp., max.	130 °C

### Environmental Product Compliance

RoHS Compliance Status	Compliant without exemption
REACH SVHC	No SVHC above 0.1 wt%

### Material data

Basic material	Wemid	Colour	blue
UL 94 flammability rating	V-0		

### Classifications

ETIM 8.0	EC002848	ETIM 9.0	EC002848
ETIM 10.0	EC002848	ECLASS 14.0	27-25-03-90
ECLASS 15.0	27-25-03-90		

Drawings

