

**CP TTB****Weidmüller Interface GmbH & Co. KG**

Klingenbergstraße 26

D-32758 Detmold

Germany

[www.weidmueller.com](http://www.weidmueller.com)

The comprehensive accessories of the Klippon® Connect TTB-Range are perfectly matched down to the last detail. This facilitates mounting while adhering to required norms. All function- and safety-relevant components are captively connected to the terminal block. This increases the reliability of the current and voltage transformer circuits during installation and maintenance work.

**General ordering data**

Version	Cover hood (terminal)
Order No.	<a href="#">2710140000</a>
Type	CP TTB
GTIN (EAN)	4064675014171
Qty.	10 items

**CP TTB**

**Weidmüller Interface GmbH & Co. KG**  
 Klingenbergstraße 26  
 D-32758 Detmold  
 Germany

www.weidmueller.com

**Technical data**

**Approvals**

ROHS Conform

**Dimensions and weights**

Depth	59 mm	Depth (inches)	2.3228 inch
Height	148.5 mm	Height (inches)	5.8464 inch
Width	1000 mm	Width (inches)	39.37 inch
Net weight	27 g		

**Temperatures**

Storage temperature -25 °C...55 °C

**Environmental Product Compliance**

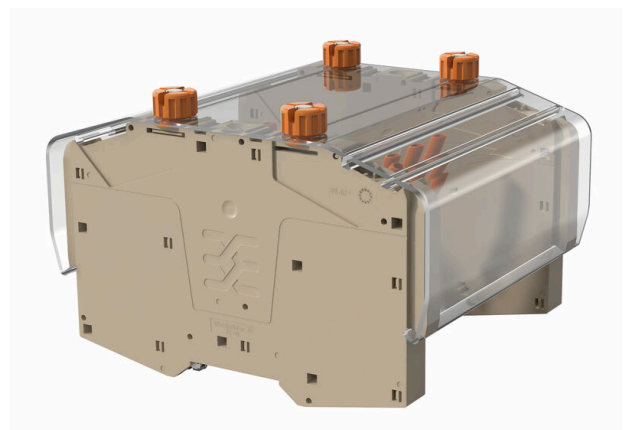
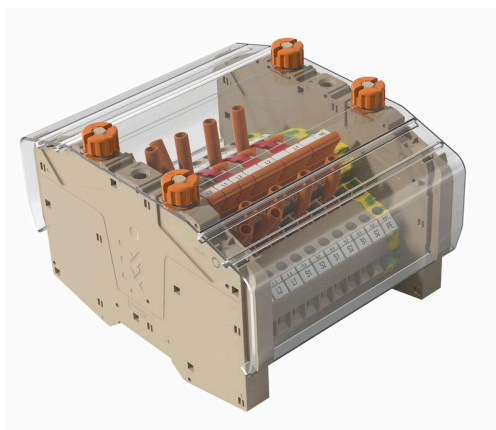
RoHS Compliance Status Compliant without exemption  
 REACH SVHC No SVHC above 0.1 wt%

**Material data**

Colour Transparent UL 94 flammability rating V-2

**Classifications**

ETIM 8.0	EC002848	ETIM 9.0	EC002848
ETIM 10.0	EC002848	ECLASS 14.0	27-25-03-90
ECLASS 15.0	27-25-03-90		





### EL CC-RAIL



#### Customised identification: EL

The endless variations of MultiMark markers make them an economical alternative to conventional tag rails or special labels. For any given width, the height can be precisely configured by the software to match the respective markers perfectly. A blade is used to cut the labels individually to the specified size. Perfect for producing large labels for function blocks or complete terminal blocks.

Your benefits with MultiMark

- "Different materials for various requirements"
- Can be used with equipment from many manufacturers
- Device markers with a familiar design

#### General ordering data

Type	EL CC-RAIL MM GE 30M	Version	
Order No.	<a href="#">2619980000</a>	THM, Device markers, 15 x , yellow	
GTIN (EAN)	4050118626100		
Qty.	1 ST		