

**CH TTB****Weidmüller Interface GmbH & Co. KG**

Klingenbergstraße 26

D-32758 Detmold

Germany

[www.weidmueller.com](http://www.weidmueller.com)

The comprehensive accessories of the Klippon® Connect TTB-Range are perfectly matched down to the last detail. This facilitates mounting while adhering to required norms. All function- and safety-relevant components are captively connected to the terminal block. This increases the reliability of the current and voltage transformer circuits during installation and maintenance work.

**General ordering data**

Version	Cover hood (terminal)
Order No.	<a href="#">2710130000</a>
Type	CH TTB
GTIN (EAN)	4064675021155
Qty.	1 items

**CH TTB**

**Weidmüller Interface GmbH & Co. KG**  
 Klingenbergstraße 26  
 D-32758 Detmold  
 Germany

www.weidmueller.com

**Technical data**

**Approvals**

ROHS Conform

**Dimensions and weights**

Depth	88.5 mm	Depth (inches)	3.4842 inch
Height	150 mm	Height (inches)	5.9055 inch
Width	200 mm	Width (inches)	7.874 inch
Net weight	193 g		

**Temperatures**

Storage temperature -25 °C...55 °C

**Environmental Product Compliance**

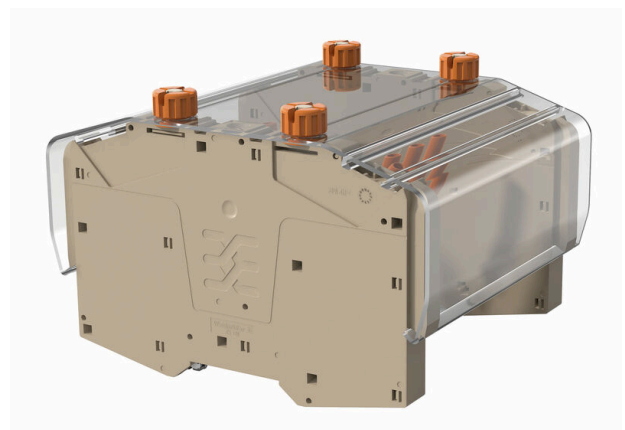
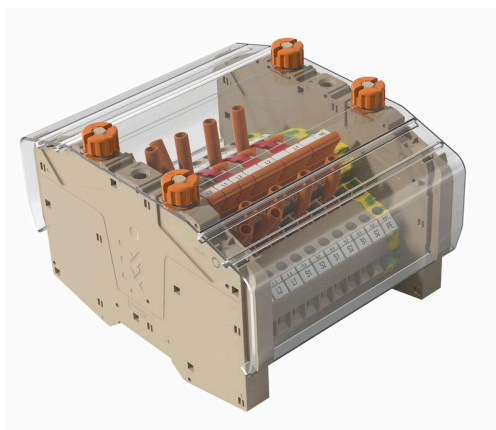
RoHS Compliance Status Compliant without exemption  
 REACH SVHC No SVHC above 0.1 wt%

**Material data**

Colour Transparent UL 94 flammability rating V-2

**Classifications**

ETIM 8.0	EC002848	ETIM 9.0	EC002848
ETIM 10.0	EC002848	ECLASS 14.0	27-25-03-90
ECLASS 15.0	27-25-03-90		



Drawings

