

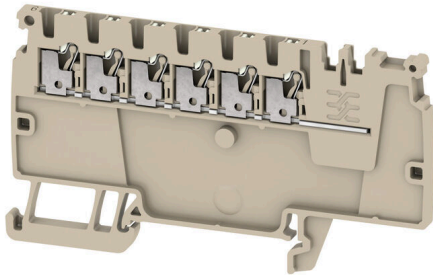
**AAP11 1.5 LI WT****Weidmüller Interface GmbH & Co. KG**

Klingenbergstraße 26

D-32758 Detmold

Germany

www.weidmueller.com



The unique modular concept can be tailored to every type of machine. The potential distribution terminal blocks AAP are successful thanks to their uniform design with two possible constructions – alternating or grouped. In the grouped structure of the control voltage distribution, the potentials are located on different terminal blocks and thus form entire potential blocks.

**General ordering data**

Version	Modular distribution terminals, PUSH IN, 1.5 mm <sup>2</sup> , 500 V, 17.5 A, dark beige, beige
Order No.	<a href="#">2683440000</a>
Type	AAP11 1.5 LI WT
GTIN (EAN)	4064675008316
Qty.	50 items

## AAP11 1.5 LI WT

Weidmüller Interface GmbH & Co. KG  
Klingenbergstraße 26  
D-32758 Detmold  
Germany

www.weidmueller.com

## Technical data

## Approvals

Approvals



ROHS	Conform
UL File Number Search	<a href="#">UL Website</a>
Certificate No. (cURus)	E60693

## Dimensions and weights

Depth	47 mm	Depth (inches)	1.8504 inch
Height	85.5 mm	Height (inches)	3.3661 inch
Width	3.5 mm	Width (inches)	0.1378 inch
Net weight	8.25 g		

## Temperatures

Storage temperature	-25 °C...55 °C	Continuous operating temp., min.	-60 °C
Continuous operating temp., max.	130 °C		

## Environmental Product Compliance

RoHS Compliance Status	Compliant without exemption
REACH SVHC	No SVHC above 0.1 wt%

## Material data

Basic material	Wemid	Colour	dark beige, beige
Colour of operational elements	white	UL 94 flammability rating	V-0

## Rating data IECEx/ATEX

Certificate No. (ATEX)	TUEV17ATEX8030U	Certificate No. (IECEX)	IECEXTUR17.0015U
Max. voltage (ATEX)	550 V	Current (ATEX)	13 A
Wire cross section max. (ATEX)	1.5 mm <sup>2</sup>	Max. voltage (IECEX)	550 V
Current (IECEX)	13 A	Wire cross section max. (IECEX)	1.5 mm <sup>2</sup>
Marking EN 60079-7	Ex ec II C Gc	Ex 2014/34/EU label	II 2 G D

## System specifications

End cover plate required	Yes	Number of potentials	1
Number of levels	1	Number of clamping points per level	6
Levels cross-connected internally	No	PE connection	No
Mounting rail	TS 35	PE function	No

## Additional technical data

Explosion-tested version	Yes	Type of mounting	TS 35, Snap-on
--------------------------	-----	------------------	----------------

## AAP11 1.5 LI WT

**Weidmüller Interface GmbH & Co. KG**  
 Klingenbergstraße 26  
 D-32758 Detmold  
 Germany

www.weidmueller.com

## Technical data

### Conductors for clamping (additional connection)

Connection type, additional connection PUSH IN

### Conductors for clamping (rated connection)

Wire connection cross section AWG, max.	AWG 14	
Connection direction	top	
Type of connection 2	PUSH IN	
Type of connection	PUSH IN	
Number of connections	6	
Clamping range, max.	1.5 mm <sup>2</sup>	
Clamping range, min.	0.14 mm <sup>2</sup>	
Wire connection cross section AWG, min.	AWG 26	
Wire connection cross-section, finely stranded with wire-end ferrules DIN 46228/4, max.	1 mm <sup>2</sup>	
Wire connection cross-section, finely stranded with wire-end ferrules DIN 46228/4, min.	0.14 mm <sup>2</sup>	
Wire connection cross-section, finely stranded with wire-end ferrules DIN 46228/1, max.	1.5 mm <sup>2</sup>	
Wire connection cross-section, finely stranded with wire-end ferrules DIN 46228/1, min.	0.14 mm <sup>2</sup>	
Wire connection cross section, finely stranded, max.	1.5 mm <sup>2</sup>	
Wire connection cross section, finely stranded, min.	0.14 mm <sup>2</sup>	
Connection cross-section, stranded, max.	1.5 mm <sup>2</sup>	
Connection cross-section, stranded, min.	0.14 mm <sup>2</sup>	
Wire connection cross-section, solid core, max.	1.5 mm <sup>2</sup>	
Wire connection cross-section, solid core, min.	0.14 mm <sup>2</sup>	
Tube length for wire-end ferrule with plastic collar DIN 46228/4	Tube length	min. 6 mm
		max. 8 mm
	Cross-section for conductor connection	min. 0.14 mm <sup>2</sup>
		max. 0.75 mm <sup>2</sup>
Tube length for wire-end ferrule without plastic collar DIN 46228/1	Tube length	min. 5 mm
	Cross-section for conductor connection	nominal 0.25 mm <sup>2</sup>
	Tube length	nominal 6 mm
	Cross-section for conductor connection	min. 0.5 mm <sup>2</sup>
		max. 1 mm <sup>2</sup>
	Tube length	nominal 10 mm
	Cross-section for conductor connection	nominal 1.5 mm <sup>2</sup>

### General

Number of poles	1	Wire connection cross section AWG, max.	AWG 14
Wire connection cross section AWG, min.	AWG 26	Standards	IEC 60947-7-1
Mounting rail	TS 35		

## AAP11 1.5 LI WT

Weidmüller Interface GmbH &amp; Co. KG

Klingenbergstraße 26

D-32758 Detmold

Germany

www.weidmueller.com

## Technical data

## Rating data

Rated cross-section	1.5 mm <sup>2</sup>	Rated voltage	500 V
Rated AC voltage	500 V	Rated DC voltage	500 V
Nominal current	17.5 A	Current at maximum wires	17.5 A
Standards	IEC 60947-7-1	Volume resistance according to IEC 60947-7-x	1.83 mΩ
Power loss in accordance with IEC 60947-7-x	0.56 W	Surge voltage category	III
Pollution severity	3		

## UL rating data

Conductor size Factory wiring max. (cURus)	14 AWG	Voltage size B (cURus)	300 V
Voltage size D (cURus)	600 V	Certificate No. (cURus)	E60693
Conductor size Field wiring min. (cURus)	26 AWG	Conductor size Factory wiring min. (cURus)	26 AWG
Current size B (cURus)	13 A	Voltage size C (cURus)	300 V
Current size C (cURus)	13 A	Current size D (cURus)	5 A
Conductor size Field wiring max. (cURus)	14 AWG		

## Classifications

ETIM 8.0	EC000897	ETIM 9.0	EC000897
ETIM 10.0	EC000897	ECLASS 14.0	27-25-01-19
ECLASS 15.0	27-25-01-19		

Drawings

