

VPU ZPA I 3+1 RA 300/12,5

Weidmüller Interface GmbH & Co. KG
 Klingenbergstraße 26
 D-32758 Detmold
 Germany

www.weidmueller.com



Lightning arresters for 40 mm rail systems

- Simple and safe to use and install
- Complete and permanent status control
- Leakage current free surge protection
- Application-specific application classes with 7.5 kA and 12.5 kA discharge current

General ordering data

Version	Surge voltage arrester, Low voltage, Leakage-current-free, TN-C-S, TN-S, TT
Order No.	2674410000
Type	VPU ZPA I 3+1 RA 300/12,5
GTIN (EAN)	4050118686791
Qty.	1 items
Delivery status	Discontinued
Available until	2023-10-31T00:00:00+01:00
Alternative product	VPU ZPA S I 3+1 RA 300/12,5

VPU ZPA I 3+1 RA 300/12,5

Weidmüller Interface GmbH & Co. KG
Klingenbergstraße 26
D-32758 Detmold
Germany

www.weidmueller.com

Technical data

Approvals

Approvals



ROHS Conform

Dimensions and weights

Depth	99 mm	Depth (inches)	3.8976 inch
Height	229 mm	Height (inches)	9.0157 inch
Width	47 mm	Width (inches)	1.8504 inch
Net weight	100 g		

Temperatures

Storage temperature	-40 °C...70 °C	Operating temperature	-40 °C...70 °C
Humidity	5...95 %, no condensation		

Environmental Product Compliance

RoHS Compliance Status	Compliant without exemption
REACH SVHC	No SVHC above 0.1 wt%

Connection data, remote alert

Cross-section for connected wire, solid core, min.	0.14 mm ²	Connection type	Screw connection
Cross-section for connected wire, solid core, max.	1.5 mm ²	Max. torque	0.4 Nm

General data

Optical function display	green = OK; red = arrester is defective - replace	Segment	Power distribution
Version	Leakage-current-free	Design	for 40mm busbars
UL 94 flammability rating	V-0	Colour	grey
Suitable for	Count-in installation (leakage current free)	Protection degree	IP30, in combination with the cover
Operating altitude	≤ 4000 m		

Rated data IEC / EN

Number of poles	4	Leakage current at Un	5 µA
Signalling contact	1 CO 250 V AC. 1 A / 125 V DC. 30 mA	Rated voltage (AC)	240 V
Low voltage network	TN-C-S, TN-S, TT	Protection level Up at IN (N-PE)	≤ 1.5 kV
Voltage type	AC	Temporary surge voltage (over-voltage) - TOV	442 V
Fuse protection	No Fuse necessary ≤315 A gG	Response time / fallback time	≤ 100 ns
Suitable for	Count-in installation (leakage current free)	Standards	IEC61643-11, EN61643-11
Lightning test current limp (10/350 µs) (L-PE)	12.5 kA	Lightning test current, limp (10/350 µs) (N-PE)	50 kA
Requirements class, acc. to EN 61643-11	T1, T2	Requirements category acc. to IEC 61643-11	Type I, Type II

VPU ZPA I 3+1 RA 300/12,5

Weidmüller Interface GmbH & Co. KG

Klingenbergstraße 26
D-32758 Detmold
Germany

www.weidmueller.com

Technical data

Max. continuous voltage, U _c (AC)	300 V	Max. continuous voltage, U _c (N-PE)	305 V
Mains voltage	230 V / 400 V	Discharge current I _{max} (8/20μs) N-PE	100 kA
Discharge current I _n (8/20μs) N-PE	80 kA	Energy coordination (≤10 m)	Type I, Type II
Discharge current I _n (8/20μs) wire-PE	20 kA	Discharge current I _{max} (8/20μs) wire-PE	50 kA
SPD type	T1, T2	Protection level U _p at IN (L/N-PE)	≤ 1.5 kV
Short-circuit current rating ISCCR	25 kA	Follow-on current extinguishing capability I _{fi}	Follow current need not be taken into account
Integrated back-up fuse	No		

Connection data

Stripping length	12 mm	Wire connection method	Screw connection
Type of connection	Clamped	Tightening torque, max.	4.5 Nm
Clamping range, min.	16 mm ²	Clamping range, max.	35 mm ²
Conductor cross-section, flexible, AEH (DIN 46228-1), min.	16 mm ²	Conductor cross-section, flexible, AEH (DIN 46228-1), max.	25 mm ²
Connection cross-section, stranded, min. 16 mm ²		Connection cross-section, stranded, max.	35 mm ²

Electrical data

Voltage type	AC	Nominal current	20 A
--------------	----	-----------------	------

General data

Number of poles	4	Protection degree	IP30, in combination with the cover
Colour	grey		

Guarantee

Time interval	5 years
---------------	---------

Important note

Product information	Only applicable to IT power systems where the earth on the distribution transformer is interconnected with the earth on the consumer side (RE=RA in Figure 44.A1 of IEC 60634-4-44:2018).
---------------------	---

Classifications

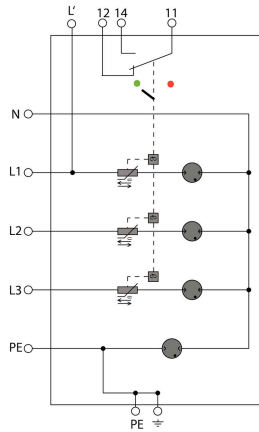
ETIM 8.0	EC001457	ETIM 9.0	EC001457
ETIM 10.0	EC001457	ECLASS 14.0	27-17-12-04
ECLASS 15.0	27-17-12-04		

VPU ZPA I 3+1 RA 300/12,5

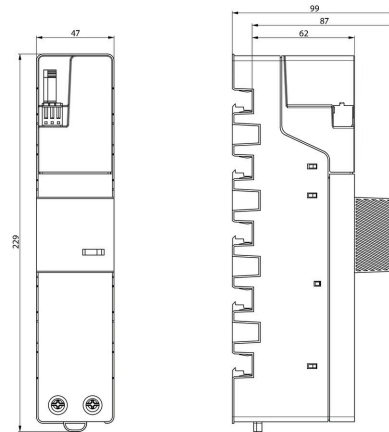
Weidmüller Interface GmbH & Co. KG
Klingenbergstraße 26
D-32758 Detmold
Germany

Drawings

www.weidmueller.com



Prinzipschaltbild



VPU ZPA I 3+1 RA 300/12,5

Weidmüller Interface GmbH & Co. KG
 Klingenbergstraße 26
 D-32758 Detmold
 Germany

www.weidmueller.com

Accessories

Crosshead screwdriver Phillips



VDE insulated crosshead screwdriver, for Phillips screws, SDIK PH DIN 7438, ISO 8764/2-PH, output to ISO 8764-PH, SoftFinish grip

General ordering data

Type	SDIK PH1 X 80	Version	
Order No.	2749890000	Screwdriver, Blade width (B): 1 mm, 80 mm, Blade thickness (A): 1	
GTIN (EAN)	4050118897098		
Qty.	1 ST		

Slotted screwdriver



VDE insulated slot-head screwdriver, SDI DIN 7437, ISO 2380/2, drive output acc. to DIN 5264, ISO 2380/1. SoftFinish grip

General ordering data

Type	SDIS 1.0X5.5X125	Version	
Order No.	2749850000	Screwdriver, Blade width (B): 5.5 mm, Blade length: 125 mm, Blade thickness (A): 1 mm	
GTIN (EAN)	4050118897050		
Qty.	1 ST		

VPU Series



Extensive accessories round off the product range

General ordering data

Type	PLUG VPU AC	Version	
Order No.	2855300000		
GTIN (EAN)	4064675533283		
Qty.	10 ST		