

AITB 2.5 NDT-L-PE

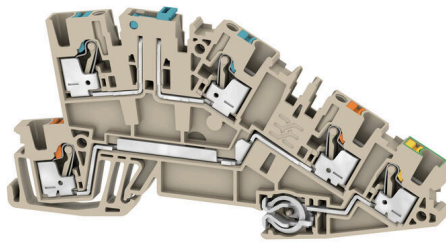
Weidmüller Interface GmbH & Co. KG

Klingenbergstraße 26

D-32758 Detmold

Germany

www.weidmueller.com



Building installation wiring

For building installations, we offer a complete system that revolves around the 10×3 copper rail and comprises perfectly coordinated components: from installation terminal blocks, neutral conductor terminal blocks and distribution terminal blocks to comprehensive accessories such as busbars and busbar holders.

General ordering data

| | |
|------------|--|
| Version | Multi level installation terminal block, PUSH IN, dark beige, 2.5 mm ² , 24 A, 250 V, Number of connections: 5, Number of levels: 3 |
| Order No. | 2669030000 |
| Type | AITB 2.5 NDT-L-PE |
| GTIN (EAN) | 4064675030614 |
| Qty. | 50 items |

AITB 2.5 NDT-L-PE

Weidmüller Interface GmbH & Co. KG
Klingenbergstraße 26
D-32758 Detmold
Germany

www.weidmueller.com

Technical data

Approvals

Approvals



ROHS Conform

UL File Number Search [UL Website](#)

Certificate No. (cURus) E60693

Dimensions and weights

| | | | |
|------------|---------|-----------------|-------------|
| Depth | 50.1 mm | Depth (inches) | 1.9724 inch |
| Height | 103 mm | Height (inches) | 4.0551 inch |
| Width | 5.1 mm | Width (inches) | 0.2008 inch |
| Net weight | 13.32 g | | |

Temperatures

| | | | |
|----------------------------------|----------------|----------------------------------|---------------|
| Storage temperature | -25 °C...55 °C | Ambient temperature | -5 °C...40 °C |
| Continuous operating temp., min. | -60 °C | Continuous operating temp., max. | 130 °C |

Environmental Product Compliance

| | |
|------------------------|-----------------------------|
| RoHS Compliance Status | Compliant without exemption |
| REACH SVHC | No SVHC above 0.1 wt% |

Material data

| | | | |
|--------------------------------|--------|---------------------------|------------|
| Basic material | Wemid | Colour | dark beige |
| Colour of operational elements | orange | UL 94 flammability rating | V-0 |

System specifications

| | | | |
|-----------------------------------|-----|-------------------------------------|-------|
| End cover plate required | Yes | Number of potentials | 3 |
| Number of levels | 3 | Number of clamping points per level | 2 |
| Levels cross-connected internally | No | Mounting rail | TS 35 |
| N-function | No | PE function | Yes |
| PEN function | No | | |

Additional technical data

| | | | |
|------------------|---------|---------|-----|
| Open sides | right | Snap-on | Yes |
| Type of mounting | Snap-on | | |

CSA rating data

| | | | |
|-------------------------------|--------|-----------------------|-----------------|
| Wire cross section max. (CSA) | 12 AWG | Voltage size C (CSA) | 300 V |
| Current size C (CSA) | 20 A | Certificate No. (CSA) | 200039-70089609 |
| Voltage size B (CSA) | 300 V | Current size B (CSA) | 20 A |
| Voltage size D (CSA) | 300 V | Current size D (CSA) | 10 A |
| Wire cross section min. (CSA) | 26 AWG | | |

Conductors for clamping (rated connection)

| | |
|----------------------|----|
| Gauge to IEC 60947-1 | A3 |
|----------------------|----|

AITB 2.5 NDT-L-PE

Weidmüller Interface GmbH & Co. KG

Klingenbergstraße 26
D-32758 Detmold
Germany

www.weidmueller.com

Technical data

| | | | |
|---|--|---------|----------------------|
| Wire connection cross section AWG, max. | AWG 12 | | |
| Connection direction | top | | |
| Stripping length | 10 mm | | |
| Type of connection 2 | PUSH IN | | |
| Type of connection | PUSH IN | | |
| Number of connections | 5 | | |
| Clamping range, max. | 4 mm ² | | |
| Clamping range, min. | 0.14 mm ² | | |
| Blade size | 0.6 x 3.5 mm | | |
| Wire connection cross section AWG, min. | AWG 28 | | |
| Wire connection cross-section, finely stranded with wire-end ferrules DIN 46228/4, max. | 2.5 mm ² | | |
| Wire connection cross-section, finely stranded with wire-end ferrules DIN 46228/4, min. | 0.14 mm ² | | |
| Wire connection cross-section, finely stranded with wire-end ferrules DIN 46228/1, max. | 4 mm ² | | |
| Wire connection cross-section, finely stranded with wire-end ferrules DIN 46228/1, min. | 0.14 mm ² | | |
| Wire connection cross section, finely stranded, max. | 4 mm ² | | |
| Wire connection cross section, finely stranded, min. | 0.14 mm ² | | |
| Connection cross-section, stranded, max. | 4 mm ² | | |
| Connection cross-section, stranded, min. | 0.14 mm ² | | |
| Twin wire-end ferrules, max. | 0.75 mm ² | | |
| Twin wire-end ferrules, min. | 0.5 mm ² | | |
| Wire connection cross-section, solid core, max. | 4 mm ² | | |
| Wire connection cross-section, solid core, min. | 0.14 mm ² | | |
| Tube length for wire-end ferrule with plastic collar DIN 46228/4 | Tube length | min. | 6 mm |
| | | max. | 8 mm |
| | Cross-section for conductor connection | min. | 0.14 mm ² |
| | | max. | 0.34 mm ² |
| | Tube length | min. | 6 mm |
| | | max. | 12 mm |
| | Cross-section for conductor connection | min. | 0.5 mm ² |
| | | max. | 1 mm ² |
| | Tube length | min. | 8 mm |
| | | max. | 12 mm |
| | Cross-section for conductor connection | min. | 1.5 mm ² |
| | | max. | 2.5 mm ² |
| Tube length for twin wire-end ferrule | Tube length | min. | 8 mm |
| | | max. | 12 mm |
| | Cross-section for conductor connection | min. | 0.5 mm ² |
| | | max. | 0.75 mm ² |
| Tube length for wire-end ferrule without plastic collar DIN 46228/1 | Tube length | nominal | 5 mm |
| | Cross-section for conductor connection | nominal | 0.25 mm ² |
| | Tube length | min. | 6 mm |
| | | max. | 10 mm |
| | Cross-section for conductor connection | min. | 0.5 mm ² |
| | | max. | 1 mm ² |
| Tube length | min. | 7 mm | |

AITB 2.5 NDT-L-PE

Weidmüller Interface GmbH & Co. KG
 Klingenbergstraße 26
 D-32758 Detmold
 Germany

www.weidmueller.com

Technical data

| | | |
|--|------|---------------------|
| Cross-section for conductor connection | max. | 12 mm |
| | min. | 1.5 mm ² |
| | max. | 2.5 mm ² |

General

| | | | |
|---|----------------------|---|--------|
| Wire connection cross section AWG, max. | AWG 12 | Wire connection cross section AWG, min. | AWG 28 |
| Standards | IEC 60947-7-1 (-7-2) | Mounting rail | TS 35 |

Rating data

| | | | |
|--|---------------------|---------------------------------|----------------------|
| Rated cross-section | 2.5 mm ² | Rated voltage | 250 V |
| Rated DC voltage | 250 V | Nominal current | 24 A |
| Current at maximum wires | 27 A | Standards | IEC 60947-7-1 (-7-2) |
| Volume resistance according to IEC 60947-7-x | 1.33 mΩ | Rated impulse withstand voltage | 4 kV |
| Power loss in accordance with IEC 60947-7-x | 0.77 W | Rated voltage (L / L) | 400 V |
| Rated voltage (L / N) | 250 V | Rated voltage (L / PE) | 250 V |
| Surge voltage category | III | Pollution severity | 3 |

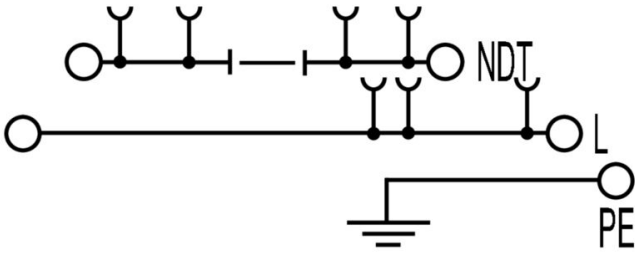
UL rating data

| | | | |
|--|--------|--|--------|
| Conductor size Factory wiring max. (cURus) | 12 AWG | Voltage size B (cURus) | 300 V |
| Voltage size D (cURus) | 300 V | Certificate No. (cURus) | E60693 |
| Conductor size Field wiring min. (cURus) | 26 AWG | Conductor size Factory wiring min. (cURus) | 26 AWG |
| Current size B (cURus) | 20 A | Voltage size C (cURus) | 300 V |
| Current size C (cURus) | 20 A | Current size D (cURus) | 10 A |
| Conductor size Field wiring max. (cURus) | 12 AWG | | |

Classifications

| | | | |
|-------------|-------------|-------------|-------------|
| ETIM 8.0 | EC001329 | ETIM 9.0 | EC001329 |
| ETIM 10.0 | EC001329 | ECLASS 14.0 | 27-25-01-10 |
| ECLASS 15.0 | 27-25-01-10 | | |

Drawings



AITB 2.5 NDT-L-PE

Weidmüller Interface GmbH & Co. KG
 Klingenbergstraße 26
 D-32758 Detmold
 Germany

www.weidmueller.com

Accessories

End bracket

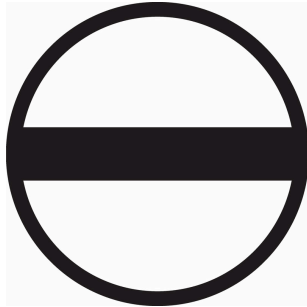


Weidmüller's range of products includes end brackets that guarantee a permanent, reliable mounting on the terminal rail and prevent sliding. Versions with and without screws are available. The end brackets include marking options, also for group markers, and also a test plug holder.

General ordering data

| | | |
|------------|----------------------------|-----------------------|
| Type | AEB 35 SCL/1 V0 | Version |
| Order No. | 2661280000 | A-series, End bracket |
| GTIN (EAN) | 4050118702163 | |
| Qty. | 20 ST | |
| Type | AEB 35 SCL/1 V0 BK | Version |
| Order No. | 2661300000 | A-series, End bracket |
| GTIN (EAN) | 4050118702187 | |
| Qty. | 20 ST | |
| Type | AEB 35 SCL/1 V0 GY | Version |
| Order No. | 2661290000 | A-series, End bracket |
| GTIN (EAN) | 4050118702170 | |
| Qty. | 20 ST | |

Slotted screwdriver



VDE insulated screwdriver sets, for working on live parts up to 1000 V AC and 1500 V DC, DIN EN 60900. IEC 900. Each piece is "GS" safety tested. Blade made from fully hardened, high-alloy chromium-vanadium-molybdenum steel, gun-metal finish.

General ordering data

| | | |
|------------|----------------------------|---|
| Type | SDIS SLIM 0.6X3.5X100 | Version |
| Order No. | 2749610000 | Mounting tool, Blade width (B): 3.5 mm, Blade length: 100 mm, Blade thickness (A): 0.6 mm |
| GTIN (EAN) | 4050118896350 | |
| Qty. | 1 ST | |

AITB 2.5 NDT-L-PE

Weidmüller Interface GmbH & Co. KG
 Klingenbergstraße 26
 D-32758 Detmold
 Germany

Accessories

www.weidmueller.com

Fuse holder



The fuse holder SIHA quickly turns a disconnect terminal into a fuse terminal: simply remove the disconnect lever and attach the fuse unit.

General ordering data

| | | |
|------------|----------------------------|--|
| Type | SIHA 3/G20 | Version |
| Order No. | 7921560000 | Fuse holder for feed-through modular terminal, black, 6.3 A, |
| GTIN (EAN) | 4032248264643 | pluggable, V-0, Wemid |
| Qty. | 25 ST | |
| Type | SIHA 3/G20/LD 10-36V | Version |
| Order No. | 7921570000 | Fuse holder for feed-through modular terminal, black, 2.31 mA, |
| GTIN (EAN) | 4032248322503 | pluggable, V-0, Wemid |
| Qty. | 25 ST | |
| Type | SIHA 3/G20/LD 140-250V | Version |
| Order No. | 7921600000 | Fuse holder for feed-through modular terminal, black, 2.31 mA, |
| GTIN (EAN) | 4032248322633 | pluggable, V-0, Wemid |
| Qty. | 25 ST | |
| Type | SIHA 3/G20/LD 60-150V | Version |
| Order No. | 7921590000 | Fuse holder for feed-through modular terminal, black, 2.31 mA, |
| GTIN (EAN) | 4032248322626 | pluggable, V-0, Wemid |
| Qty. | 25 ST | |
| Type | SIHA 3/G20/LD 35-70V | Version |
| Order No. | 7921580000 | Fuse holder for feed-through modular terminal, black, 2.31 mA, |
| GTIN (EAN) | 4032248322619 | pluggable, V-0, Wemid |
| Qty. | 25 ST | |
| Type | SIHA 3/G20/LD 10-36V BL | Version |
| Order No. | 1005250000 | Fuse holder for feed-through modular terminal, blue, 2.31 A, |
| GTIN (EAN) | 4032248712038 | pluggable, V-0, Wemid |
| Qty. | 25 ST | |
| Type | SIHA 3/G20 BL | Version |
| Order No. | 1004260000 | Fuse holder for feed-through modular terminal, blue, 6.3 A, pluggable, |
| GTIN (EAN) | 4032248709717 | V-0, Wemid |
| Qty. | 25 ST | |
| Type | SIHA 3/G20 | Version |
| Order No. | 7926190000 | Fuse holder for feed-through modular terminal, black, 6.3 A, |
| GTIN (EAN) | 4032248264612 | pluggable, V-0, Wemid |
| Qty. | 1000 ST | |

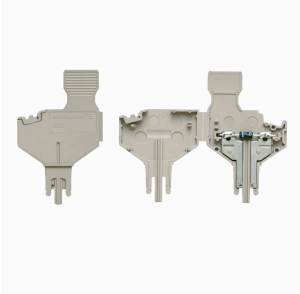
AITB 2.5 NDT-L-PE

Weidmüller Interface GmbH & Co. KG
 Klingenbergstraße 26
 D-32758 Detmold
 Germany

Accessories

www.weidmueller.com

Component plugs



The component plug is used to integrate an electrical component in a disconnect terminal block. After soldering the electronic component, the plug can be integrated into the disconnection area of our disconnect terminal blocks and thus changes the disconnect terminal block into a modular terminal block with integrated electronic component.

General ordering data

| | | | |
|------------|----------------------------|-----------------------------------|--|
| Type | BEST | Version | |
| Order No. | 1833100000 | Accessories, Component plug | |
| GTIN (EAN) | 4032248501014 | | |
| Qty. | 50 ST | | |
| Type | BEST/DRBR | Version | |
| Order No. | 1878570000 | Accessories, Component plug, 22 A | |
| GTIN (EAN) | 4032248471508 | | |
| Qty. | 50 ST | | |
| Type | BEST/D | Version | |
| Order No. | 1878560000 | Accessories, Component plug, 1 A | |
| GTIN (EAN) | 4032248471492 | | |
| Qty. | 50 ST | | |

Disconnect plugs



In contrast to the terminal blocks with integrated disconnect lever, our disconnect plugs can be completely detached or removed from the terminal block and the respective application and offer a flexible alternative solution to our standard disconnectors.

General ordering data

| | | | |
|------------|----------------------------|---|--|
| Type | TNST OR | Version | |
| Order No. | 2463540000 | Disconnect plug (terminal), Wemid, orange | |
| GTIN (EAN) | 4050118478211 | | |
| Qty. | 50 ST | | |

AITB 2.5 NDT-L-PE

Weidmüller Interface GmbH & Co. KG

Klingenbergstraße 26

D-32758 Detmold

Germany

Accessories

www.weidmueller.com

DEK 5/5



WS/ DEK

MultiMark terminal markers use an innovative composite material made from two components. The hard base contour of the marker snaps securely into the connector. The elastic surface finish makes the marker easy to mount. This specially punched material enables the strips to be stretched to accommodate the slight variations in spacing that tend to add up, especially with long terminal blocks. Another advantage: the excellent printability of the surface material guarantees durable and wear-resistant labelling. A print resolution of 300 dpi also produces a very legible script.

Your benefits with MultiMark

- Firm hold and durable printing
- Continuous strips save installation time
- Easy mounting thanks to an innovative composite material
- Large label field for optimal legibility
- High flexibility thanks to manufacturer independence

General ordering data

| | | | |
|------------|----------------------------|--|--|
| Type | DEK 5/5 MM WS | Version | |
| Order No. | 2007110000 | Dekafix, Terminal marker, 5 x 5 mm, Weidmueller, white | |
| GTIN (EAN) | 4050118391862 | | |
| Qty. | 800 ST | | |

Cross-connections



The distribution or multiplication of a potential to adjoining terminal blocks is realized via a cross-connection. Additional wiring effort can be easily avoided. Even if the poles are broken out, contact reliability in the terminal blocks is still ensured. Our portfolio offers pluggable and screwable cross-connection systems for modular terminal blocks.

General ordering data

| | | | |
|------------|----------------------------|---|--|
| Type | ZQV 2.5N/10 | Version | |
| Order No. | 1527690000 | Cross-connector (terminal), Plugged, orange, 24 A, Number of poles: 10, Pitch in mm (P): 5.10, Insulated: Yes, Width: 48.7 mm | |
| GTIN (EAN) | 4050118447989 | | |
| Qty. | 20 ST | | |
| Type | ZQV 2.5N/2 | Version | |
| Order No. | 1527540000 | Cross-connector (terminal), Plugged, orange, 24 A, Number of poles: 2, Pitch in mm (P): 5.10, Insulated: Yes, Width: 7.9 mm | |
| GTIN (EAN) | 4050118448467 | | |
| Qty. | 60 ST | | |
| Type | ZQV 2.5N/20 | Version | |
| Order No. | 1527720000 | Cross-connector (terminal), Plugged, orange, 24 A, Number of poles: 20, Pitch in mm (P): 5.10, Insulated: Yes, Width: 102 mm | |
| GTIN (EAN) | 4050118447972 | | |
| Qty. | 20 ST | | |

AITB 2.5 NDT-L-PE

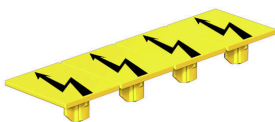
Weidmüller Interface GmbH & Co. KG
 Klingenbergstraße 26
 D-32758 Detmold
 Germany

www.weidmueller.com

Accessories

| | | |
|------------|----------------------------|---|
| Type | ZQV 2.5N/3 | Version |
| Order No. | 1527570000 | Cross-connector (terminal), Plugged, orange, 24 A, Number of poles: |
| GTIN (EAN) | 4050118448450 | 3, Pitch in mm (P): 5.10, Insulated: Yes, Width: 13 mm |
| Qty. | 60 ST | |
| Type | ZQV 2.5N/4 | Version |
| Order No. | 1527590000 | Cross-connector (terminal), Plugged, orange, 24 A, Number of poles: |
| GTIN (EAN) | 4050118448443 | 4, Pitch in mm (P): 5.10, Insulated: Yes, Width: 18.1 mm |
| Qty. | 60 ST | |
| Type | ZQV 2.5N/5 | Version |
| Order No. | 1527620000 | Cross-connector (terminal), Plugged, orange, 24 A, Number of poles: |
| GTIN (EAN) | 4050118448436 | 5, Pitch in mm (P): 5.10, Insulated: Yes, Width: 23.2 mm |
| Qty. | 20 ST | |
| Type | ZQV 2.5N/50 | Version |
| Order No. | 1527730000 | Cross-connector (terminal), Plugged, orange, 24 A, Number of poles: |
| GTIN (EAN) | 4050118411362 | 50, Pitch in mm (P): 5.10, Insulated: Yes, Width: 255 mm |
| Qty. | 5 ST | |
| Type | ZQV 2.5N/6 | Version |
| Order No. | 1527630000 | Cross-connector (terminal), Plugged, orange, 24 A, Number of poles: |
| GTIN (EAN) | 4050118448429 | 6, Pitch in mm (P): 5.10, Insulated: Yes, Width: 28.3 mm |
| Qty. | 20 ST | |
| Type | ZQV 2.5N/7 | Version |
| Order No. | 1527640000 | Cross-connector (terminal), Plugged, orange, 24 A, Number of poles: |
| GTIN (EAN) | 4050118448412 | 7, Pitch in mm (P): 5.10, Insulated: Yes, Width: 33.4 mm |
| Qty. | 20 ST | |
| Type | ZQV 2.5N/8 | Version |
| Order No. | 1527670000 | Cross-connector (terminal), Plugged, orange, 24 A, Number of poles: |
| GTIN (EAN) | 4050118448405 | 8, Pitch in mm (P): 5.10, Insulated: Yes, Width: 38.5 mm |
| Qty. | 20 ST | |
| Type | ZQV 2.5N/9 | Version |
| Order No. | 1527680000 | Cross-connector (terminal), Plugged, orange, 24 A, Number of poles: |
| GTIN (EAN) | 4050118447996 | 9, Pitch in mm (P): 5.10, Insulated: Yes, Width: 43.6 mm |
| Qty. | 20 ST | |

Warning cover



Warning covers with a flash symbol provide more safety for man and machine. They are used where external voltage must be indicated within the application.

General ordering data

| | | |
|------------|----------------------------|---|
| Type | AAM 2.5 YE FLASH | Version |
| Order No. | 2635550000 | A-series, Terminal marker, 8 x 5.1 mm, Pitch in mm (P): 5.00 yellow |
| GTIN (EAN) | 4050118674095 | |
| Qty. | 40 ST | |

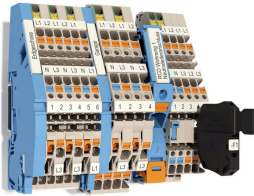
AITB 2.5 NDT-L-PE

Weidmüller Interface GmbH & Co. KG
Klingenbergstraße 26
D-32758 Detmold
Germany

www.weidmueller.com

Accessories

Installation terminal blocks



Building installation wiring

For building installations, we offer a complete system that revolves around the 10×3 copper rail and comprises perfectly coordinated components: from installation terminal blocks, neutral conductor terminal blocks and distribution terminal blocks to comprehensive accessories such as busbars and busbar holders.

General ordering data

| | | | |
|------------|----------------------------|---------|--|
| Type | AITB 16 BB NLO BL | Version | |
| Order No. | 2669140000 | Version | Multi level installation terminal block, PUSH IN, blue, 16 mm ² , 76 A, |
| GTIN (EAN) | 4064675266372 | Version | 1000 V, Number of connections: 2, Number of levels: 1 |
| Qty. | 20 ST | | |

End plates and partition plates



Partition plates and end plates are essential accessories for terminal blocks. Partition plates provide optical and electrical separation of different potentials and functional groups, increasing safety and ensuring a clear structure inside the control cabinet. End plates close the terminal block row on the sides, protect against contact with live parts, and ensure a clean, stable finish. Both components are precisely matched to the respective Weidmüller terminal block series, contributing to safe, compliant, and professional wiring.

General ordering data

| | | | |
|------------|----------------------------|---------|---------------------|
| Type | AEP ITB 2.5 | Version | |
| Order No. | 2669060000 | Version | A-series, End plate |
| GTIN (EAN) | 4064675030645 | | |
| Qty. | 20 ST | | |

Testadapter and testsockets



Test adapters and test plugs are used for the electrical connection between terminal blocks and the test equipment. In this way, an electrical contact can be established in the wired state and measurements can be done easily.

General ordering data

| | | | |
|------------|----------------------------|---------|--|
| Type | FZS 2/4 RT/80 SAKT4 | Version | |
| Order No. | 1276300000 | Version | Plug (terminal), Plug-in connection, 2 mm ² , Number of connections: 2, |
| GTIN (EAN) | 4008190026080 | Version | Number of poles: 1, Width: 9 mm |
| Qty. | 20 ST | | |