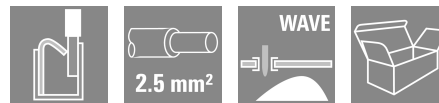
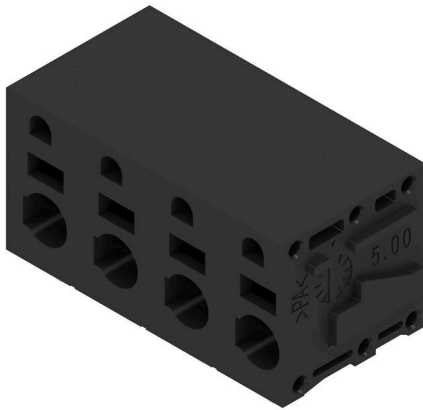


**LMFS 7.50/04/90 3.5SN BK BX**

**Weidmüller Interface GmbH & Co. KG**  
Klingenbergstraße 26  
D-32758 Detmold  
Germany

www.weidmueller.com

**Product image**

The innovative quick connector - simple, safe and economical:

PCB terminals with spring connection and direct PUSH IN technology. A milestone in connection technology.

Amazingly simple and simply amazing in practice:

- Connect and easily detach solid wires or wires with wire-end ferrules without using tools
- Processed automatically in the reflow or vapour phase
- Potentials and clamping points marked clearly by coloured push buttons

World-class design-in and processing phases, and suitable for a vast range of applications.

**General ordering data**

|              |  |
|--------------|--|
| Version      | Printed circuit board terminals, Number of poles: 4, PUSH IN |
| Order No.    | <a href="#">2667330000</a>                                   |
| Type         | LMFS 7.50/04/90 3.5SN BK BX                                  |
| GTIN (EAN)   | 4050118815214  |
| Qty.         | 50 items   |
| Product data | UL:  |

**LMFS 7.50/04/90 3.5SN BK BX**

**Weidmüller Interface GmbH & Co. KG**  
 Klingenbergstraße 26  
 D-32758 Detmold  
 Germany

www.weidmueller.com

**Technical data**

**Dimensions and weights**

Net weight 6.62 g

**Environmental Product Compliance**

RoHS Compliance Status Compliant without exemption  
 REACH SVHC No SVHC above 0.1 wt%

**System parameters**

|                     |                              |                        |         |
|---------------------|------------------------------|------------------------|---------|
| Product family      | OMNIMATE Signal - series LMF | Wire connection method | PUSH IN |
| Pitch in inches (P) | 0.295 "                      | Number of poles        | 4       |
| Pin series quantity | 1                            | Protection degree      | IP20    |

**Material data**

|                           |            |                                      |                  |
|---------------------------|------------|--------------------------------------|------------------|
| Insulating material       | Wemid (PA) | Comparative Tracking Index (CTI)     | ≥ 600            |
| Moisture Level (MSL)      |            | UL 94 flammability rating            | V-0              |
| Contact material          | Cu-alloy   | Layer structure of solder connection | 4...8 µm Sn matt |
| Storage temperature, min. | -40 °C     | Storage temperature, max.            | 70 °C            |

**Conductors suitable for connection**

Reference text Length of ferrules is to be chosen depending on the product and the rated voltage., The outside diameter of the plastic collar should not be larger than the pitch (P)

**Rated data acc. to IEC**

tested acc. to standard IEC 60664-1, IEC 60947-7-4

**Packing**

|            |           |           |           |
|------------|-----------|-----------|-----------|
| VPE length | 338.00 mm | VPE width | 130.00 mm |
| VPE height | 27.00 mm  |           |           |

**Type tests**

|                               |                |  |                              |
|-------------------------------|----------------|--|------------------------------|
| Test: Durability of markings  | Standard       | IEC 61984 section 6.2 and 7.3.2 / 10.11  |                              |
|                               | Test           | mark of origin, type identification, approval marking UL, approval marking CSA, durability |                              |
|                               | Evaluation     | available  |                              |
| Test: Clampable cross section | Standard       | IEC 60947-7-4 sections 7.1.2 and 9.3.2 / 01.19   |                              |
|                               | Conductor type | Type of conductor and conductor cross-section  | solid 0.2 mm <sup>2</sup>    |
|                               |                | Type of conductor and conductor cross-section  | stranded 0.2 mm <sup>2</sup> |
|                               |                | Type of conductor and conductor cross-section  | solid 2.5 mm <sup>2</sup>    |

**LMFS 7.50/04/90 3.5SN BK BX**

**Weidmüller Interface GmbH & Co. KG**  
 Klingenbergstraße 26  
 D-32758 Detmold  
 Germany

www.weidmueller.com

**Technical data**

|   |   |   |                              |  |
|---|---|---|------------------------------|--|
|   |   | Type of conductor and conductor cross-section | AWG 12/7                     |  |
|   |   | Type of conductor and conductor cross-section | AWG 24/11                    |  |
|   | Evaluation                                    | passed  |                              |  |
|   | Standard                                      | IEC 60999-1 section 9.4 / 11.99               |                              |  |
|   | Requirement                                   | 0.2 kg  |                              |  |
| Test for damage to and accidental loosening of conductors | Conductor type                                | Type of conductor and conductor cross-section | solid 0.2 mm <sup>2</sup>    |  |
|   |   | Type of conductor and conductor cross-section | stranded 0.2 mm <sup>2</sup> |  |
|   |   | Type of conductor and conductor cross-section | AWG 24/11                    |  |
|   | Evaluation                                    | passed  |                              |  |
|   | Requirement                                   | 0.7 kg  |                              |  |
|   | Conductor type                                | Type of conductor and conductor cross-section | solid 2.5 mm <sup>2</sup>    |  |
|   | Evaluation                                    | passed  |                              |  |
|   | Requirement                                   | 0.9 kg  |                              |  |
| Pull-out test   | Conductor type                                | Type of conductor and conductor cross-section | AWG 12/7                     |  |
|   |   | IEC 60999-1 section 9.5 / 11.99               |                              |  |
|   |   | ≥10 N   |                              |  |
|   | Conductor type                                | Type of conductor and conductor cross-section | solid 0.2 mm <sup>2</sup>    |  |
|   |   | Type of conductor and conductor cross-section | stranded 0.2 mm <sup>2</sup> |  |
|   |   | Type of conductor and conductor cross-section | AWG 24/11                    |  |
|   | Evaluation                                    | passed  |                              |  |
|   | Requirement                                   | ≥50 N   |                              |  |
|   | Conductor type                                | Type of conductor and conductor cross-section | solid 2.5 mm <sup>2</sup>    |  |
|   | Evaluation                                    | passed  |                              |  |
| Requirement   | ≥ 60 N  |   |                              |  |
| Conductor type  | Type of conductor and conductor cross-section | AWG 12/7                                      |                              |  |

**Important note**

**IPC conformity** Conformity: The products are developed, manufactured and delivered according international recognized standards and norms and comply with the assured properties in the data sheet resp. fulfill decorative properties in accordance with IPC-A-610 "Class 2". Further claims on the products can be evaluated on request.

- Notes**
- Additional variants on request
  - Rated current related to rated cross-section & min. No. of poles.
  - Wire end ferrule without plastic collar to DIN 46228/1
  - Wire end ferrule with plastic collar to DIN 46228/4
  - P on drawing = pitch
  - Rated data refer only to the component itself. Clearance and creepage distances to other components are to be designed in accordance with the relevant application standards.

## LMFS 7.50/04/90 3.5SN BK BX

**Weidmüller Interface GmbH & Co. KG**  
Klingenbergstraße 26  
D-32758 Detmold  
Germany

[www.weidmueller.com](http://www.weidmueller.com)

## Technical data

- The test point can only be used as potential-pickup point.
- Long term storage of the product with average temperature of 50 °C and maximum humidity 70%, 36 months

### Classifications

|             |             |             |             |
|-------------|-------------|-------------|-------------|
| ETIM 8.0    | EC002643    | ETIM 9.0    | EC002643    |
| ETIM 10.0   | EC002643    | ECLASS 14.0 | 27-46-01-01 |
| ECLASS 15.0 | 27-46-01-01 |             |             |

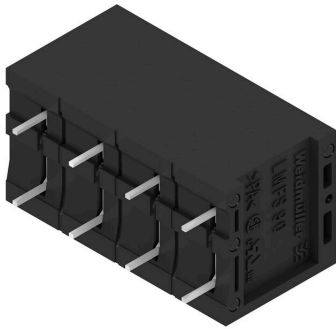
## LMFS 7.50/04/90 3.5SN BK BX

**Weidmüller Interface GmbH & Co. KG**  
 Klingenbergstraße 26  
 D-32758 Detmold  
 Germany

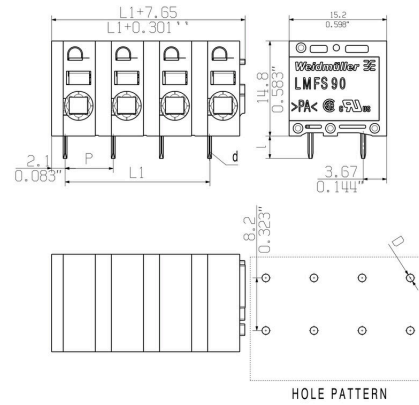
www.weidmueller.com

# Drawings

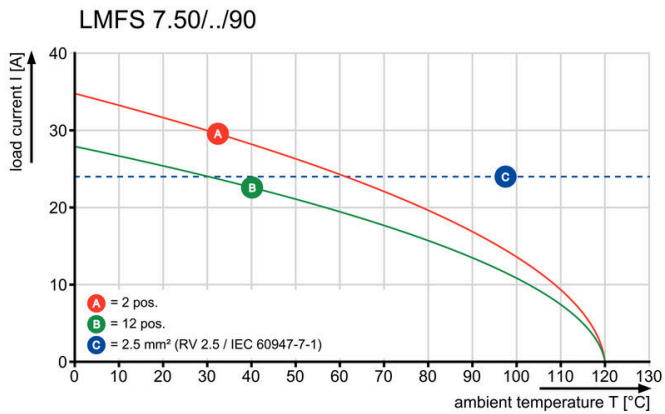
### Product image



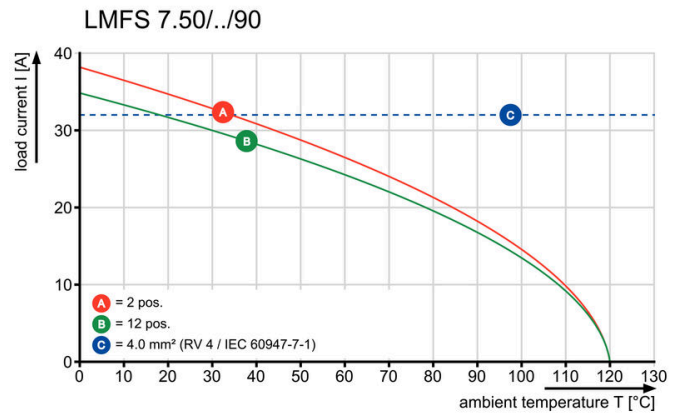
### Dimensional drawing



### Derating curve



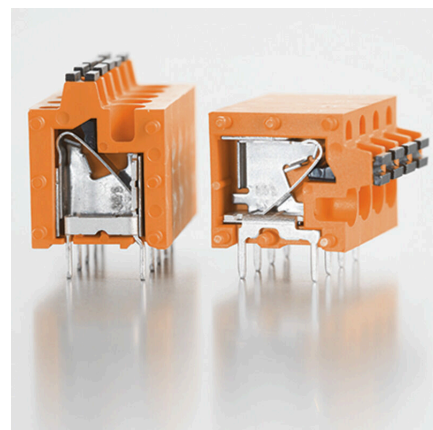
### Derating curve



### Product benefits

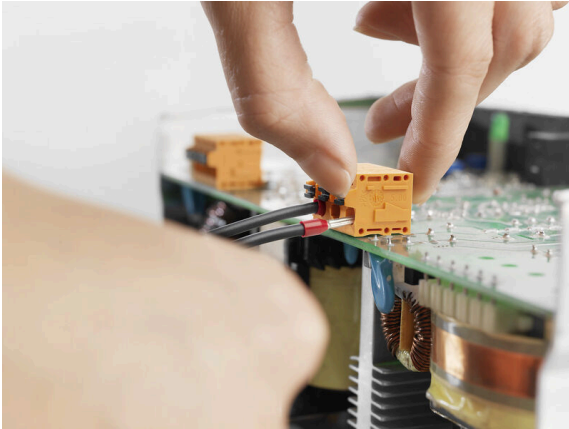


### Product benefits

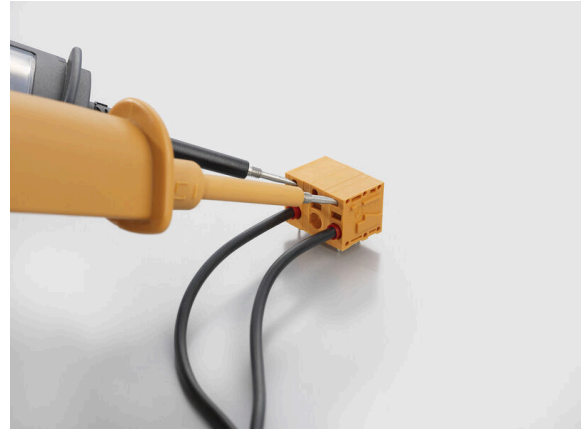


**Drawings**

**Product benefits**



**Product benefits**



## LMFS 7.50/04/90 3.5SN BK BX

**Weidmüller Interface GmbH & Co. KG**  
 Klingenbergstraße 26  
 D-32758 Detmold  
 Germany

www.weidmueller.com

## Accessories

## Slotted screwdriver



VDE insulated slot-head screwdriver, SDI DIN 7437, ISO 2380/2, drive output acc. to DIN 5264, ISO 2380/1.  
 SoftFinish grip

## General ordering data

|            |                            |                          |  |
|------------|----------------------------|--------------------------|--|
| Type       | SDIS 0.6X3.5X100           | Version                  |  |
| Order No.  | <a href="#">9008390000</a> | Screwdriver, Screwdriver |  |
| GTIN (EAN) | 4032248056354              |                          |  |
| Qty.       | 1 ST                       |                          |  |

## Additional accessories



No task is too small when creating the perfect solution. Connections form just one part of the overall process. Small details are often the key to the perfect solution in applications where potentials are tested, grouped or even isolated.

A system is not a system without small but essential details:

- Test plugs ensure reliable pick-up from diagnostic sockets

In tandem with the manufacturing process and application.

## General ordering data

|            |                            |  |   |
|------------|----------------------------|--|---|
| Type       | PS 2.0 MC                  | Version  |   |
| Order No.  | <a href="#">0310000000</a> | PCB plug-in connector, Accessories, Test plug, red, Number of poles: |   |
| GTIN (EAN) | 4008190000059              |  |   |
| Qty.       | 20 ST                      |  | 1 |