

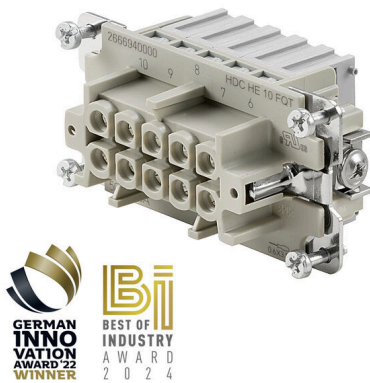
HDC HE 10 N FQT
Weidmüller Interface GmbH & Co. KG

Klingenbergstraße 26

D-32758 Detmold

Germany

www.weidmuller.com

SNAP IN 


With the SNAP IN connection, the conductor connection level is already open and the stripped connector can be simply inserted. In the end position, the patented clamping mechanism closes automatically. As a result, it requires virtually no maintenance and a safe, permanent and vibration-proof connection is established. Weidmüller is therefore the first and only manufacturer to offer this innovative connection system.

General ordering data

Version	HDC insert, Female, 500 V, 16 A, Number of poles: 10, SNAP IN, Installation size: 4
Order No.	2666930000
Type	HDC HE 10 N FQT
GTIN (EAN)	4050118898118
Qty.	1 items

HDC HE 10 N FQT

Weidmüller Interface GmbH & Co. KG

Klingenbergstraße 26

D-32758 Detmold

Germany

www.weidmueller.com

Technical data

Approvals

Approvals



ROHS Conform

UL File Number Search [UL Website](#)

Certificate No. (cURus) E92202

Dimensions and weights

Depth	34 mm	Depth (inches)	1.3386 inch
Height	36.3 mm	Height (inches)	1.4291 inch
Width	64 mm	Width (inches)	2.5197 inch
Length	64 mm	Length (inches)	2.5197 inch
Diameter	2.5 mm	Net weight	60 g

Temperatures

Limit temperature -40 °C ... 125 °C

Environmental Product Compliance

RoHS Compliance Status Compliant with exemption

RoHS Exemption (if applicable/known) 6c

REACH SVHC Lead 7439-92-1, Potassium perfluorobutane sulfonate 29420-49-3

SCIP b67daa31-7dca-434d-8290-da7fb52f83a2

Dimensions

Width 64 mm

General data

Number of poles	10
Plugging cycles, silver	≥ 500
Plugging cycles, gold	≥ 500
Type of connection	SNAP IN
Installation size	4
UL 94 flammability rating	V-0
Volume resistance	≤2 mΩ
Colour	light grey (RAL 7035)
Insulation resistance	1010 Ω
Insulating material	PA 66
Insulating material group	IIIa
Tightening torque, max. PE connection	1.5 Nm
Surface finish	Silver passivated
Type	Female
Pollution severity	3
Tightening torque, min. PE connection	1.2 Nm
Basic material	Copper alloy
Series	HE
Rated voltage (DIN EN 61984)	500 V
Rated voltage according to UL/CSA	600 V AC/DC
Rated impulse voltage (DIN EN 61984)	6 kV
Rated current (DIN EN 61984)	16 A

Creation date 25.02.2026 07:40:02 MEZ

Catalogue status / Drawings

HDC HE 10 N FQT

Weidmüller Interface GmbH & Co. KG

Klingenbergstraße 26

D-32758 Detmold

Germany

www.weidmueller.com

Technical data

Rated current (UR)	Wire connection cross section AWG	AWG 16
	Rated current	10 A
Rated current (cUR)	Wire connection cross section AWG	AWG 16
	Rated current	10.3 A
Free from halogens	true	
Low smoke acc. DIN EN 45545-2	Yes	
BG	4	
Number of signal contacts	0	
Number of power contacts	10	

Connection data PE

Connection type PE	Screw connection	Blade size, slotted (PE connection)	SD 0.8 x 4.0
Stripping length PE connection	10 mm	Tightening torque, max. PE connection	1.5 Nm
Tightening torque, min. PE connection	1.2 Nm	Fixing screw	M 4
Wire cross section, AWG (PE), min.	AWG 20	Wire cross section, AWG (PE), max.	AWG 12

Version

Wire connection cross section AWG, max.	AWG 16	Stripping length, rated connection	10 mm
Type of connection	SNAP IN	Installation size	4
Volume resistance	≤2 mΩ	Blade size	SD 0.6 x 3.5
Wire connection cross section AWG, min.	AWG 20	Wire cross-section, solid, max.	2.5 mm ²
Wire cross-section, solid, min.	0.5 mm ²	Wire connection cross-section, finely stranded with wire-end ferrules DIN 46228/4, min.	0.34 mm ²
Wire connection cross-section, finely stranded with wire-end ferrules DIN 46228/1, min.	0.34 mm ²	Wire connection cross section, finely stranded, max.	2.5 mm ²
Wire connection cross section, finely stranded, min.	0.5 mm ²	Conductor cross-section, max.	2.5 mm ²
Conductor cross-section, min.	1 mm ²	Surface finish	Silver passivated
Basic material	Copper alloy	BG	4

Classifications

ETIM 8.0	EC000438	ETIM 9.0	EC000438
ETIM 10.0	EC000438	ECLASS 14.0	27-44-02-05
ECLASS 15.0	27-44-02-05		

HDC HE 10 N FQT

Weidmüller Interface GmbH & Co. KG
 Klingenbergstraße 26
 D-32758 Detmold
 Germany

www.weidmueller.com

Accessories

Slotted screwdriver



VDE insulated slot-head screwdriver, SDI DIN 7437, ISO 2380/2, drive output acc. to DIN 5264, ISO 2380/1. SoftFinish grip

General ordering data

Type	SDIS 0.6X3.5X100	Version	
Order No.	9008390000	Screwdriver, Screwdriver	
GTIN (EAN)	4032248056354		
Qty.	1 ST		
Type	SDS 0.6X3.5X100	Version	
Order No.	9008330000	Screwdriver, Screwdriver	
GTIN (EAN)	4032248056286		
Qty.	1 ST		

DSTV



Various accessories are available for our inserts. This includes coding elements for the inserts.

General ordering data

Type	DSTV COBU5	Version	
Order No.	1471500000	Heavy-duty connectors, Accessories, Coding element	
GTIN (EAN)	4008190178543		
Qty.	100 ST		
Type	DSTV COST4	Version	
Order No.	1471300000	Heavy-duty connectors, Accessories, Coding System	
GTIN (EAN)	4008190017354		
Qty.	100 ST		