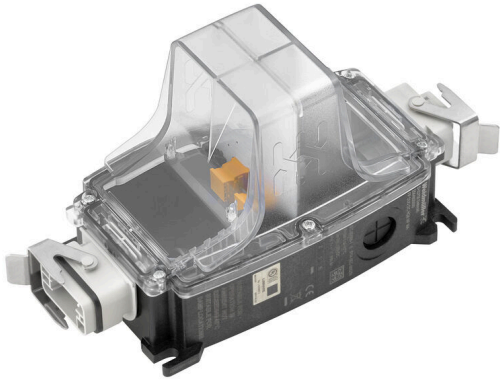


## FP DUO DC HQ8 MF MA SP

**Weidmüller Interface GmbH & Co. KG**  
Klingenbergstraße 26  
D-32758 Detmold  
Germany

www.weidmuller.com



Energy-efficient emergency lighting with a long service life

- developed and to be used in accordance with DIN EN 60598-2-22
- LED lamp for harsh environmental conditions (shocks and vibration, temperature range)
- higher energy efficiency and service life than fluorescent lamps
- Can be used worldwide thanks to the multi-voltage input (20 V...60 VDC)
- high fire protection classification V0
- Beam direction to one side
- 5W Power

Versions

- Pluggable with heavy duty connector and round connector
- Pre-assembled 2.5 mm<sup>2</sup>

### General ordering data

Order No.	2663580000
Type	<a href="#">FP DUO DC HQ8 MF MA SP</a>
GTIN (EAN)	4050118700978

## FP DUO DC HQ8 MF MA SP

Weidmüller Interface GmbH &amp; Co. KG

Klingenbergstraße 26

D-32758 Detmold

Germany

www.weidmueller.com

## Technical data

## Approvals

Approvals



ROHS Conform

UL File Number Search [UL Website](#)

Certificate no. (cULus) E345151

## Dimensions and weights

Depth	104 mm	Depth (inches)	4.0945 inch
Height	121 mm	Height (inches)	4.7638 inch
Width	238 mm	Width (inches)	9.3701 inch
Net weight	450 g		

## Temperatures

Storage temperature	-40 °C...85 °C	Operating temperature	-40 °C...55 °C
Humidity	92 % @ 25 °C		

## Environmental Product Compliance

RoHS Compliance Status	Compliant with exemption
RoHS Exemption (if applicable/known)	6c, 7a, 7cl
REACH SVHC	Lead 7439-92-1, Potassium perfluorobutane sulfonate 29420-49-3, 6,6'-di-tert-butyl-2,2'-methylenedi-p-cresol 119-47-1
SCIP	1058cf56-abda-4cb6-a963-1c7ea664989f

## General data

Silicone	No	Type of connection	Plug-in connector with fixed number of poles, HQ 8
UL 94 flammability rating	V-0	Halogen	No
Type of mounting	Magnet	Nominal voltage	24 V
Protection degree	IP54	Surge voltage category	II
Pollution severity	2	Insulation voltage	<500 V (housing/PE)
Mounting position, installation notice	Arbitrary	Protection class	II
Amplitude of deflection	1.5 mm (2-9 Hz)	Vibration resistance EN 60721-3-3	Class 3M3 sinusoidal, stationary
Shock resistance EN 60721-3-3	Class 3M3 portable	Light current	496 lm
Connector cross-section, max.	2.5 mm <sup>2</sup>	Connector cross-section, min.	0.5 mm <sup>2</sup>
Altitude	≤ 3000 m	Short-circuit protection	Yes, internal
Light colour (CCT)	Cool White, 6000K, 6000K	Amplitude of acceleration	5 m/s <sup>2</sup> (@ 9-200 Hz)
LED operating life	> 50.000 h	Light current (in total in both directions)	496 lm
Shape of the LED module	Other	Efficiency class (according to EU Directive No. 874/2012)	Not required
Luminosity	5000 cd	Peak acceleration, type L	70 m/s <sup>2</sup>

## Rated data acc. to IEC 60598-1

Power rating	5 W	Nominal current	0.2 A
DC input voltage range	20...60 V DC		

**FP DUO DC HQ8 MF MA SP**

**Weidmüller Interface GmbH & Co. KG**  
Klingenbergstraße 26  
D-32758 Detmold  
Germany

[www.weidmueller.com](http://www.weidmueller.com)

**Technical data**

**Classifications**

ETIM 8.0	EC000996	ETIM 9.0	EC000996
ETIM 10.0	EC000996	ECLASS 14.0	27-11-06-35
ECLASS 15.0	27-11-06-35		

**FP DUO DC HQ8 MF MA SP**

**Weidmüller Interface GmbH & Co. KG**  
Klingenbergstraße 26  
D-32758 Detmold  
Germany

**Drawings**

[www.weidmueller.com](http://www.weidmueller.com)

