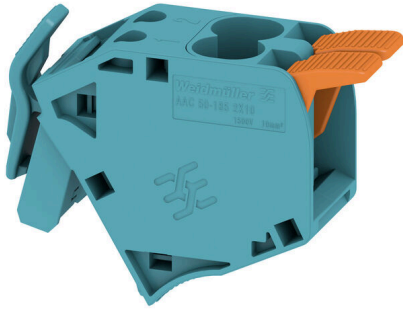


AAC 50-185 2X10 BL

Weidmüller Interface GmbH & Co. KG
Klingenbergstraße 26
D-32758 Detmold
Germany

www.weidmueller.com



The additional connection enables a separate voltage tap. This can be used, for example, for the emergency power supply before the main switch or simply as an additional connection within the application.

General ordering data

Version	Auxiliary connection (terminal), 10 mm ² , Number of connections: 2
Order No.	2663430000
Type	AAC 50-185 2X10 BL
GTIN (EAN)	4064675027973
Qty.	5 items

AAC 50-185 2X10 BL

Weidmüller Interface GmbH & Co. KG
Klingenbergstraße 26
D-32758 Detmold
Germany

www.weidmueller.com

Technical data

Approvals

Approvals



ROHS Conform

UL File Number Search [UL Website](#)

Certificate No. (cURus) E60693

Dimensions and weights

Depth	42.5 mm	Depth (inches)	1.6732 inch
Height	50.5 mm	Height (inches)	1.9882 inch
Width	20 mm	Width (inches)	0.7874 inch
Net weight	30 g		

Temperatures

Storage temperature	-25 °C...55 °C	Ambient temperature	-5 °C...40 °C
Continuous operating temp., min.	-60 °C	Continuous operating temp., max.	130 °C

Environmental Product Compliance

RoHS Compliance Status	Compliant without exemption
REACH SVHC	No SVHC above 0.1 wt%

Material data

Basic material	Wemid	Colour	blue
Colour of operational elements	orange	UL 94 flammability rating	V-0

System specifications

End cover plate required	No	Number of potentials	1
Number of levels	1	Number of clamping points per level	2
Number of potentials per tier	1	N-function	Yes

Additional technical data

Type of fixing	Plugged	Type of mounting	Plug
----------------	---------	------------------	------

CSA rating data

Voltage size C (CSA)	1000 V	Current size C (CSA)	68 A
Certificate No. (CSA)	200039-80069332	Voltage size B (CSA)	1000 V
Current size B (CSA)	68 A	Voltage size D (CSA)	600 V
Current size D (CSA)	5 A		

Conductors for clamping (rated connection)

Wire connection cross section AWG, max.	AWG 6	Connection direction	top
Number of connections	2	Clamping range, max.	16 mm ²

AAC 50-185 2X10 BL

Weidmüller Interface GmbH & Co. KG

Klingenbergstraße 26
D-32758 Detmold
Germany

www.weidmueller.com

Technical data

Clamping range, min.	0.5 mm ²	Blade size	1.0 x 5.5 mm
Wire connection cross section AWG, min.	AWG 20	Wire connection cross-section, finely stranded with wire-end ferrules DIN 46228/4, max.	10 mm ²
Wire connection cross-section, finely stranded with wire-end ferrules DIN 46228/4, min.	0.5 mm ²	Wire connection cross-section, finely stranded with wire-end ferrules DIN 46228/1, max.	10 mm ²
Wire connection cross-section, finely stranded with wire-end ferrules DIN 46228/1, min.	0.5 mm ²	Wire connection cross section, finely stranded, max.	16 mm ²
Wire connection cross section, finely stranded, min.	0.5 mm ²	Connection cross-section, stranded, max.	16 mm ²
Connection cross-section, stranded, min.	0.5 mm ²	Wire connection cross-section, solid core, max.	16 mm ²
Wire connection cross-section, solid core, min.	0.5 mm ²	Connection cross-section, finely stranded, max.	16 mm ²
Connection cross-section, finely stranded, min.	0.5 mm ²		

General

Wire connection cross section AWG, max.	AWG 6	Operating temperature range, max.	130 °C
Operating temperature range, min.	-60 °C	Wire connection cross section AWG, min.	AWG 20

Rating data

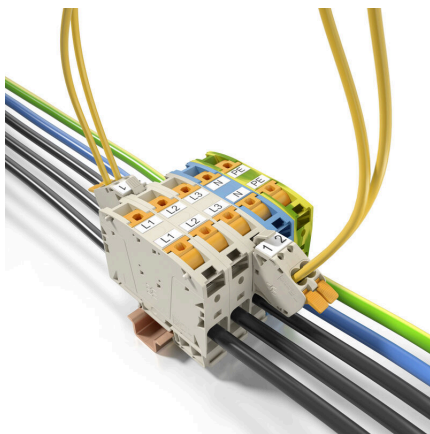
Rated cross-section	10 mm ²	Rated voltage	1000 V
Rated AC voltage	1000 V	Rated DC voltage	1500 V
Nominal current	57 A	Current at maximum wires	57 A
Rated impulse withstand voltage	8 kV	Short-time withstand current resistance	8/20µs with 50 kA
Surge voltage category	III	Pollution severity	3

UL rating data

Conductor size Factory wiring max. (cURus)	6 AWG	Voltage size B (cURus)	600 V
Voltage size D (cURus)	600 V	Certificate No. (cURus)	E60693
Conductor size Field wiring min. (cURus)	20 AWG	Conductor size Factory wiring min. (cURus)	20 AWG
Current size B (cURus)	68 A	Voltage size C (cURus)	600 V
Current size C (cURus)	68 A	Current size D (cURus)	5 A
Conductor size Field wiring max. (cURus)	6 AWG		

Classifications

ETIM 8.0	EC002848	ETIM 9.0	EC002848
ETIM 10.0	EC002848	ECLASS 14.0	27-25-03-08
ECLASS 15.0	27-25-03-08		



AAC 50-185 2X10 BL

Weidmüller Interface GmbH & Co. KG
 Klingenbergstraße 26
 D-32758 Detmold
 Germany

www.weidmueller.com

Accessories

End bracket



Weidmüller's range of products includes end brackets that guarantee a permanent, reliable mounting on the terminal rail and prevent sliding. Versions with and without screws are available. The end brackets include marking options, also for group markers, and also a test plug holder.

General ordering data

Type	AEB 35 SCL/1	Version
Order No.	2570210000	A-series, End bracket
GTIN (EAN)	4050118581447	
Qty.	20 ST	
Type	AEB 35 SCL/1 BK	Version
Order No.	2570220000	A-series, End bracket
GTIN (EAN)	4050118580235	
Qty.	20 ST	
Type	AEB 35 SCL/1 GY	Version
Order No.	2570230000	A-series, End bracket
GTIN (EAN)	4050118580242	
Qty.	20 ST	