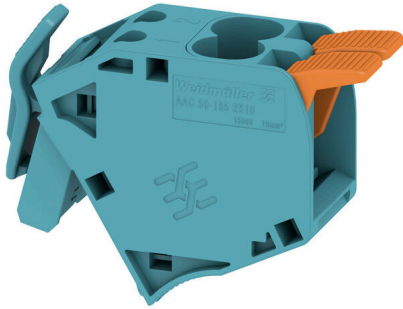


**AAC 50-185 2X10 BL****Weidmüller Interface GmbH & Co. KG**

Klingenbergstraße 26

D-32758 Detmold

Germany

[www.weidmueller.com](http://www.weidmueller.com)

The additional connection enables a separate voltage tap. This can be used, for example, for the emergency power supply before the main switch or simply as an additional connection within the application.

**General ordering data**

Version	Auxiliary connection (terminal), 10 mm <sup>2</sup> , Number of connections: 2
Order No.	<a href="#">2663430000</a>
Type	AAC 50-185 2X10 BL
GTIN (EAN)	4064675027973
Qty.	5 items

## AAC 50-185 2X10 BL

Weidmüller Interface GmbH & Co. KG  
Klingenbergstraße 26  
D-32758 Detmold  
Germany

www.weidmueller.com

## Technical data

## Approvals

Approvals



ROHS Conform

UL File Number Search [UL Website](#)

Certificate No. (cURus) E60693

## Dimensions and weights

Depth	42.5 mm	Depth (inches)	1.6732 inch
Height	50.5 mm	Height (inches)	1.9882 inch
Width	20 mm	Width (inches)	0.7874 inch
Net weight	30 g		

## Temperatures

Storage temperature	-25 °C...55 °C	Ambient temperature	-5 °C...40 °C
Continuous operating temp., min.	-60 °C	Continuous operating temp., max.	130 °C

## Environmental Product Compliance

RoHS Compliance Status	Compliant without exemption
REACH SVHC	No SVHC above 0.1 wt%

## Material data

Basic material	Wemid	Colour	blue
Colour of operational elements	orange	UL 94 flammability rating	V-0

## System specifications

End cover plate required	No	Number of potentials	1
Number of levels	1	Number of clamping points per level	2
Number of potentials per tier	1	N-function	Yes

## Additional technical data

Type of fixing	Plugged	Type of mounting	Plug
----------------	---------	------------------	------

## CSA rating data

Voltage size C (CSA)	1000 V	Current size C (CSA)	68 A
Certificate No. (CSA)	200039-80069332	Voltage size B (CSA)	1000 V
Current size B (CSA)	68 A	Voltage size D (CSA)	600 V
Current size D (CSA)	5 A		

## Conductors for clamping (rated connection)

Wire connection cross section AWG, max.	AWG 6	Connection direction	top
Number of connections	2	Clamping range, max.	16 mm <sup>2</sup>

## AAC 50-185 2X10 BL

**Weidmüller Interface GmbH & Co. KG**

Klingenbergstraße 26  
D-32758 Detmold  
Germany

www.weidmueller.com

## Technical data

Clamping range, min.	0.5 mm <sup>2</sup>	Blade size	1.0 x 5.5 mm
Wire connection cross section AWG, min.	AWG 20	Wire connection cross-section, finely stranded with wire-end ferrules DIN 46228/4, max.	10 mm <sup>2</sup>
Wire connection cross-section, finely stranded with wire-end ferrules DIN 46228/4, min.	0.5 mm <sup>2</sup>	Wire connection cross-section, finely stranded with wire-end ferrules DIN 46228/1, max.	10 mm <sup>2</sup>
Wire connection cross-section, finely stranded with wire-end ferrules DIN 46228/1, min.	0.5 mm <sup>2</sup>	Wire connection cross section, finely stranded, max.	16 mm <sup>2</sup>
Wire connection cross section, finely stranded, min.	0.5 mm <sup>2</sup>	Connection cross-section, stranded, max.	16 mm <sup>2</sup>
Connection cross-section, stranded, min.	0.5 mm <sup>2</sup>	Wire connection cross-section, solid core, max.	16 mm <sup>2</sup>
Wire connection cross-section, solid core, min.	0.5 mm <sup>2</sup>	Connection cross-section, finely stranded, max.	16 mm <sup>2</sup>
Connection cross-section, finely stranded, min.	0.5 mm <sup>2</sup>		

### General

Wire connection cross section AWG, max.	AWG 6	Operating temperature range, max.	130 °C
Operating temperature range, min.	-60 °C	Wire connection cross section AWG, min.	AWG 20

### Rating data

Rated cross-section	10 mm <sup>2</sup>	Rated voltage	1000 V
Rated AC voltage	1000 V	Rated DC voltage	1500 V
Nominal current	57 A	Current at maximum wires	57 A
Rated impulse withstand voltage	8 kV	Short-time withstand current resistance	8/20µs with 50 kA
Surge voltage category	III	Pollution severity	3

### UL rating data

Conductor size Factory wiring max. (cURus)	6 AWG	Voltage size B (cURus)	600 V
Voltage size D (cURus)	600 V	Certificate No. (cURus)	E60693
Conductor size Field wiring min. (cURus)	20 AWG	Conductor size Factory wiring min. (cURus)	20 AWG
Current size B (cURus)	68 A	Voltage size C (cURus)	600 V
Current size C (cURus)	68 A	Current size D (cURus)	5 A
Conductor size Field wiring max. (cURus)	6 AWG		

### Classifications

ETIM 8.0	EC002848	ETIM 9.0	EC002848
ETIM 10.0	EC002848	ECLASS 14.0	27-25-03-08
ECLASS 15.0	27-25-03-08		

