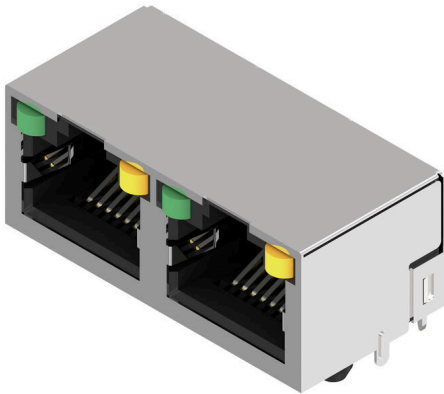


RJ45C5 R12U 1.7N4G/Y RL

Weidmüller Interface GmbH & Co. KG
 Klingenbergstraße 26
 D-32758 Detmold
 Germany

www.weidmueller.com

Product image



The product range encompasses the following designs:

- 90°, lying (horizontal) and 180°, standing (vertical)
- latch up / latch down
- THT, THR or SMD soldering processes
- Wide range of different design types, also with integrated LEDs and shield contact tabs
- Performance category Cat. 3 to Cat. 6
- Packed either in a tray (TY) or on a roll (tape-on-reel, RL)
- Compatible with modular RJ45 connector according to ANSI / TIA-1096-A and IEC 60603
- Dielectric strength ≥ 1500 V AC RMS (2250 V AC peak value) according to IEEE 802.3
- Dielectric strength ≥ 1500 V AC (peak value) or ≥ 1500 V DC according to IEC 60603

Properties and advantages:

- Extended temperature range of -40°C to $+85^{\circ}\text{C}$ for maximum performance
- Reinforced gold layer ($30\mu\text{m}$) for improved corrosion protection
- At least 0.3mm stand-off ensures a perfect soldering result

General ordering data

| | |
|------------|---|
| Version | OMNIMATE Data - RJ45 modular jack, PCB plug-in connector, Cat. 5, THT/THR solder connection, 90°, bottom, none, Yes, Plugging cycles: 750, Number of poles: 16, PA 9T, Tape |
| Order No. | 2661430000 |
| Type | RJ45C5 R12U 1.7N4G/Y RL |
| GTIN (EAN) | 4050118674651 |
| Qty. | 240 items |
| Packaging | Tape |

RJ45C5 R12U 1.7N4G/Y RL

Weidmüller Interface GmbH & Co. KG
Klingenbergstraße 26
D-32758 Detmold
Germany

www.weidmueller.com

Technical data

Approvals

| | |
|-------------------------|----------------------------|
| Approvals | CURUS |
| ROHS | Conform |
| UL File Number Search | UL Website |
| Certificate No. (cURus) | E471884 |

Dimensions and weights

| | | | |
|--------------------------|-------------|-----------------|-------------|
| Depth | 15.7 mm | Depth (inches) | 0.6181 inch |
| Height | 13.1 mm | Height (inches) | 0.5157 inch |
| Height of lowest version | 13.1 mm | Width | 32.2 mm |
| Width (inches) | 1.2677 inch | Net weight | 5.24 g |

Environmental Product Compliance

| | |
|------------------------|-----------------------------|
| RoHS Compliance Status | Compliant without exemption |
| REACH SVHC | No SVHC above 0.1 wt% |

System specifications

| | | | |
|---|-----------------------------------|----------------------------------|--|
| Number of poles | 16 | LED | Yes |
| Solder pin length (l) | 1.7 mm | Mounting onto the PCB | THT/THR solder connection |
| Pitch in inches (P) | 0.050 " | Shielding material | Brass |
| Shielding | Yes | Side termination, characteristic | Solder flange |
| Solder eyelet hole diameter tolerance (D)± 0.1 mm | | Number of solder pins per pole | 1 |
| Type of connection | Solder connection | Category | Cat. 5 |
| Product family | OMNIMATE Data - RJ45 modular jack | Pitch in mm (P) | 1.02 mm |
| Protection degree | IP20 | Plugging cycles | 750 |
| Outgoing elbow | 90° | Forward current | 20 mA |
| Forward voltage, max. | 2.6 V | Shield surface | nickel-plated |
| Colour of right LED | yellow | Shield tabs | none |
| Performance-Category | Cat. 5 | Soldering process | Reflow soldering, Manual soldering, Wave soldering |
| Latch option | bottom | Solder pin dimensions | Octagonal |
| Tolerance of solder pin position | ± 0.20 mm | Forward voltage, min. | 1.8 V |
| Colour of left LED | green | | |

Electrical properties

| | | | |
|---------------------------------------|----------------------------|--|-----------|
| Dielectric strength, contact / shield | 1500 V DC | Dielectric strength, contact / contact | 1000 V DC |
| Volume resistance | <25 mΩ | Insulation resistance | ≥ 500 MΩ |
| Nominal voltage | 125 V | Rated current | 1.5 A |
| PoE / PoE+ | conforming to IEEE 802.3at | | |

Material data

| | | | |
|----------------------------------|-------------------|---------------------------|----------|
| Insulating material | PA 9T | Colour | black |
| Colour chart (similar) | RAL 9011 | Insulating material group | II |
| Comparative Tracking Index (CTI) | ≥ 500 | Insulation resistance | ≥ 500 MΩ |
| Moisture Level (MSL) | 1 | UL 94 flammability rating | V-0 |
| Contact base material | Phosphorus bronze | Contact material | Cu-alloy |
| Contact surface | Gold over nickel | Storage temperature, min. | -40 °C |

RJ45C5 R12U 1.7N4G/Y RL

Weidmüller Interface GmbH & Co. KG
Klingenbergstraße 26
D-32758 Detmold
Germany

www.weidmueller.com

Technical data

| | | | |
|-----------------------------|-------|-----------------------------|--------|
| Storage temperature, max. | 85 °C | Operating temperature, min. | -40 °C |
| Operating temperature, max. | 85 °C | | |

Packing

| | | | |
|-----------|-----------|------------|-----------|
| Packaging | Tape | VPE length | 330.00 mm |
| VPE width | 330.00 mm | VPE height | 61.00 mm |

Important note

Notes

Classifications

| | | | |
|-------------|-------------|-------------|-------------|
| ETIM 8.0 | EC002637 | ETIM 9.0 | EC002637 |
| ETIM 10.0 | EC002637 | ECLASS 14.0 | 27-46-02-01 |
| ECLASS 15.0 | 27-46-02-01 | | |

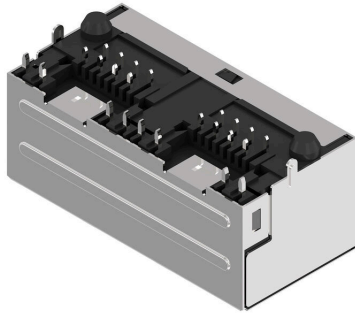
RJ45C5 R12U 1.7N4G/Y RL

Weidmüller Interface GmbH & Co. KG
Klingenbergstraße 26
D-32758 Detmold
Germany

www.weidmueller.com

Drawings

Product image



RJ45C5 R12U 1.7N4G/Y RL

Weidmüller Interface GmbH & Co. KG
 Klingenbergstraße 26
 D-32758 Detmold
 Germany

Drawings

www.weidmueller.com

| Code | Value | Description |
|-------|-------------|---|
| RJ45 | G1 | RJ45G1 R1U 3.2E4GY/GY TY |
| R | 1 | Through Hole Reflow - THR |
| U | 3.2 | Solder Pin length: 3.2 mm |
| E | 4 | Contact surface thickness: 4 μm |
| GY/GY | TY | LED: Green-Yellow/Green-Yellow |
| | TY | Packaging: Tray in box (manual assembly) |
| | RL | Packaging: Tape on Reel (automated assembly) |
| | Y/G | LED: Yellow/Green |
| | G/Y | LED: Green/Yellow (standard) |
| | GY/GY | LED: Green-Yellow/Green-Yellow |
| | G/G | LED: Orange/Green |
| | R/O | LED: Red/Orange |
| | ... | LED: ... (further combinations possible) |
| | N | LED: without LED |
| | 4 | Contact surface thickness: 1 = 3μm, 2 = 6μm, 3 = 15μm, 4 = 30μm, 5 = 50μm |
| | E | EMI tabs (ground fingers): E = with EMI tabs |
| | N | EMI tabs (ground fingers): N = without EMI tabs |
| | 3.2 | Solder Pin length: 3.2 mm |
| | 1.6 | Solder Pin length: 1.6 mm |
| | D | Solder Pin length: SMD |
| | U | Direction, latch style: Horizontal (90°, side entry), latch up |
| | D | Direction, latch style: Horizontal (90°, side entry), latch down |
| | V | Direction, latch style: Vertical (180°, top entry) |
| | Y | Direction, latch style: Diagonal (45°), latch up |
| | 1 | Number of Ports: 1 Port |
| | 12; 14; ... | Number of Ports: multi ports side by side, Multiport |
| | 21; 41; ... | Number of Ports: multi ports about each other, Multilevel |
| | R | Assembly on PCB: Through Hole Reflow - THR |
| | S | Assembly on PCB: Soldering process: Wave or Reflow soldering |
| | T | Assembly on PCB: Surface Mount Technology - SMT |
| | | Assembly on PCB: Soldering process: Reflow soldering |
| | | Assembly on PCB: Through Hole Technology - THT |
| | | Assembly on PCB: Soldering process: Wave |
| | C5 | Performance Category: Category 5 |
| | C6 | Performance Category: Category 6 |
| | C6A | Performance Category: Category 6A |
| | C5e | Performance Category: Category 5e |
| | M | Performance Category: 10/100 Mbit |
| | G1 | Performance Category: 10/100/1000 Mbit |
| | G10 | Performance Category: 10 Gbit |
| | U | Performance Category: Unshielded |
| | MP | Performance Category: 10/100 Mbit with POE |
| | MP+ | Performance Category: 10/100 Mbit with POE+ |

Legend