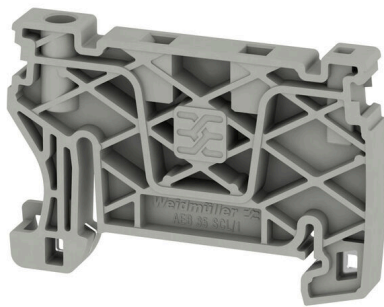


**AEB 35 SCL/1 V0 GY**

**Weidmüller Interface GmbH & Co. KG**  
Klingenbergstraße 26  
D-32758 Detmold  
Germany

www.weidmueller.com

**Product image**

Weidmüller's range of products includes end brackets that guarantee a permanent, reliable mounting on the terminal rail and prevent sliding. Versions with and without screws are available. The end brackets include marking options, also for group markers, and also a test plug holder.

**General ordering data**

Version	A-series, End bracket
Order No.	<a href="#">2661290000</a>
Type	AEB 35 SCL/1 V0 GY
GTIN (EAN)	4050118702170
Qty.	20 items

## AEB 35 SCL/1 V0 GY

**Weidmüller Interface GmbH & Co. KG**  
 Klingenbergstraße 26  
 D-32758 Detmold  
 Germany

www.weidmueller.com

## Technical data

### Approvals

ROHS	Conform
------	---------

### Dimensions and weights

Depth	36.5 mm	Depth (inches)	1.437 inch
Depth including DIN rail	37 mm	Height	52.6 mm
Height (inches)	2.0709 inch	Width	6 mm
Width (inches)	0.2362 inch	Net weight	5.55 g

### Temperatures

Storage temperature	-25 °C...55 °C	Ambient temperature	-5 °C...40 °C
Continuous operating temp., max.	130 °C		

### Environmental Product Compliance

RoHS Compliance Status	Compliant without exemption		
REACH SVHC	No SVHC above 0.1 wt%		
Product Carbon Footprint	Cradle to gate	0.063 kg CO2 eq.	

### Material data

Basic material	Wemid	Colour	Light Grey
UL 94 flammability rating	V-0		

### System specifications

Mounting rail	TS 35
---------------	-------

### Additional technical data

Type of mounting	Snap-on	Locking	screwless
------------------	---------	---------	-----------

### General

Mounting rail	TS 35
---------------	-------

### Classifications

ETIM 8.0	EC001041	ETIM 9.0	EC001041
ETIM 10.0	EC001041	ECLASS 14.0	27-25-03-02
ECLASS 15.0	27-25-03-02		