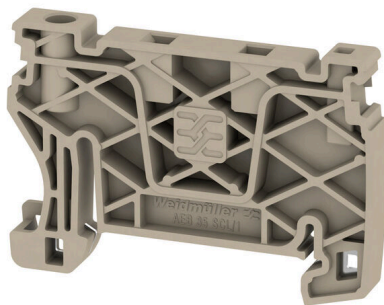


**AEB 35 SCL/1 V0**

**Weidmüller Interface GmbH & Co. KG**  
Klingenbergstraße 26  
D-32758 Detmold  
Germany

www.weidmueller.com

**Product image**

Weidmüller's range of products includes end brackets that guarantee a permanent, reliable mounting on the terminal rail and prevent sliding. Versions with and without screws are available. The end brackets include marking options, also for group markers, and also a test plug holder.

**General ordering data**

|            |                            |
|------------|----------------------------|
| Version    | A-series, End bracket      |
| Order No.  | <a href="#">2661280000</a> |
| Type       | AEB 35 SCL/1 V0            |
| GTIN (EAN) | 4050118702163              |
| Qty.       | 20 items                   |

## AEB 35 SCL/1 V0

**Weidmüller Interface GmbH & Co. KG**  
 Klingenbergstraße 26  
 D-32758 Detmold  
 Germany

www.weidmueller.com

## Technical data

### Approvals

|      |         |
|------|---------|
| ROHS | Conform |
|------|---------|

### Dimensions and weights

|                          |             |                |            |
|--------------------------|-------------|----------------|------------|
| Depth                    | 36.5 mm     | Depth (inches) | 1.437 inch |
| Depth including DIN rail | 37 mm       | Height         | 52.6 mm    |
| Height (inches)          | 2.0709 inch | Width          | 6 mm       |
| Width (inches)           | 0.2362 inch | Net weight     | 5.55 g     |

### Temperatures

|                                  |                |                                  |               |
|----------------------------------|----------------|----------------------------------|---------------|
| Storage temperature              | -25 °C...55 °C | Ambient temperature              | -5 °C...40 °C |
| Continuous operating temp., min. | -60 °C         | Continuous operating temp., max. | 130 °C        |

### Environmental Product Compliance

|                          |                             |                  |  |
|--------------------------|-----------------------------|------------------|--|
| RoHS Compliance Status   | Compliant without exemption |                  |  |
| REACH SVHC               | No SVHC above 0.1 wt%       |                  |  |
| Product Carbon Footprint | Cradle to gate              | 0.064 kg CO2 eq. |  |

### Material data

|                           |       |        |            |
|---------------------------|-------|--------|------------|
| Basic material            | Wemid | Colour | dark beige |
| UL 94 flammability rating | V-0   |        |            |

### System specifications

|               |       |
|---------------|-------|
| Mounting rail | TS 35 |
|---------------|-------|

### Additional technical data

|                  |         |         |           |
|------------------|---------|---------|-----------|
| Type of mounting | Snap-on | Locking | screwless |
|------------------|---------|---------|-----------|

### General

|               |       |
|---------------|-------|
| Mounting rail | TS 35 |
|---------------|-------|

### Classifications

|             |             |             |             |
|-------------|-------------|-------------|-------------|
| ETIM 8.0    | EC001041    | ETIM 9.0    | EC001041    |
| ETIM 10.0   | EC001041    | ECLASS 14.0 | 27-25-03-02 |
| ECLASS 15.0 | 27-25-03-02 |             |             |

## AEB 35 SCL/1 V0

**Weidmüller Interface GmbH & Co. KG**  
 Klingenbergstraße 26  
 D-32758 Detmold  
 Germany

www.weidmueller.com

## Accessories

## Blank

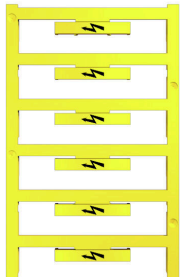


The WAD connector marker is suitable for W-series terminals and for the WEW 35/2 and ZEW 35/2 end brackets. The markers are available as blank markers, with custom printing or standard print with lightning symbol. The WAD MultiCard markers are suitable for labelling with PrintJet CONNECT printers. For custom printing: Please send us a file of our labeling software M-Print PRO or M-Print PRO Online (without installation) for your labeling specifications.

## General ordering data

|            |                            |   |  |
|------------|----------------------------|---|--|
| Type       | WAD 5 MC NE WS             | Version   |  |
| Order No.  | <a href="#">1112910000</a> | Group markers, Cover, 33.3 x 5 mm, Pitch in mm (P): 5.00 WDU 2.5, |  |
| GTIN (EAN) | 4032248891689              | WEW 35/2, ZEW 35/2, white   |  |
| Qty.       | 48 ST                      |   |  |

## With lightning flash

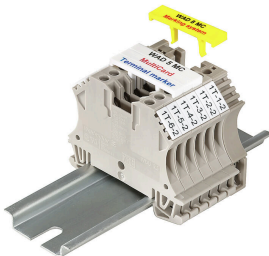


The WAD connector marker is suitable for W-series terminals and for the WEW 35/2 and ZEW 35/2 end brackets. The markers are available as blank markers, with custom printing or standard print with lightning symbol. The WAD MultiCard markers are suitable for labelling with PrintJet CONNECT printers. For custom printing: Please send us a file of our labeling software M-Print PRO or M-Print PRO Online (without installation) for your labeling specifications.

## General ordering data

|            |                            |   |  |
|------------|----------------------------|---|--|
| Type       | WAD 5 MC B GE/SW           | Version   |  |
| Order No.  | <a href="#">1120450000</a> | Group markers, Cover, 33.3 x 5 mm, Pitch in mm (P): 5.00 WDU 2.5, |  |
| GTIN (EAN) | 4032248901272              | WEW 35/2, ZEW 35/2, yellow  |  |
| Qty.       | 48 ST                      |   |  |

## Custom printing



The WAD connector marker is suitable for W-series terminals and for the WEW 35/2 and ZEW 35/2 end brackets. The markers are available as blank markers, with custom printing or standard print with lightning symbol. The WAD MultiCard markers are suitable for labelling with PrintJet CONNECT printers. For custom printing: Please send us a file of our labeling software M-Print PRO or M-Print PRO Online (without installation) for your labeling specifications.

## General ordering data

|            |                            |   |  |
|------------|----------------------------|---|--|
| Type       | WAD 5 MC SDR               | Version   |  |
| Order No.  | <a href="#">1112930000</a> | Group markers, Cover, 33.3 x 5 mm, Pitch in mm (P): 5.00 WDU 2.5, |  |
| GTIN (EAN) | 4032248891764              | WEW 35/2, ZEW 35/2, To customer specification                     |  |
| Qty.       | 12 ST                      |   |  |

## AEB 35 SCL/1 V0

**Weidmüller Interface GmbH & Co. KG**  
 Klingenbergstraße 26  
 D-32758 Detmold  
 Germany

www.weidmueller.com

## Accessories

## Blank

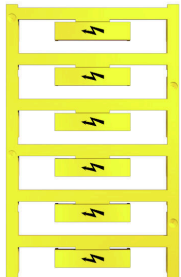


The WAD connector marker is suitable for W-series terminals and for the WEW 35/2 and ZEW 35/2 end brackets. The markers are available as blank markers, with custom printing or standard print with lightning symbol. The WAD MultiCard markers are suitable for labelling with PrintJet CONNECT printers. For custom printing: Please send us a file of our labeling software M-Print PRO or M-Print PRO Online (without installation) for your labeling specifications.

## General ordering data

|            |                            |   |  |
|------------|----------------------------|---|--|
| Type       | WAD 8 MC NE WS             | Version   |  |
| Order No.  | <a href="#">1112940000</a> | Group markers, Cover, 33.3 x 8 mm, Pitch in mm (P): 8.00 WDU 4, |  |
| GTIN (EAN) | 4032248891825              | WEW 35/2, ZEW 35/2, white                                       |  |
| Qty.       | 48 ST                      |   |  |

## With lightning flash

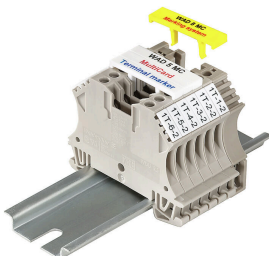


The WAD connector marker is suitable for W-series terminals and for the WEW 35/2 and ZEW 35/2 end brackets. The markers are available as blank markers, with custom printing or standard print with lightning symbol. The WAD MultiCard markers are suitable for labelling with PrintJet CONNECT printers. For custom printing: Please send us a file of our labeling software M-Print PRO or M-Print PRO Online (without installation) for your labeling specifications.

## General ordering data

|            |                            |   |  |
|------------|----------------------------|---|--|
| Type       | WAD 8 MC B GE/SW           | Version   |  |
| Order No.  | <a href="#">1120470000</a> | Group markers, Cover, 33.3 x 8 mm, Pitch in mm (P): 8.00 WDU 4, |  |
| GTIN (EAN) | 4032248901289              | WEW 35/2, ZEW 35/2, yellow                                      |  |
| Qty.       | 48 ST                      |   |  |

## Custom printing



The WAD connector marker is suitable for W-series terminals and for the WEW 35/2 and ZEW 35/2 end brackets. The markers are available as blank markers, with custom printing or standard print with lightning symbol. The WAD MultiCard markers are suitable for labelling with PrintJet CONNECT printers. For custom printing: Please send us a file of our labeling software M-Print PRO or M-Print PRO Online (without installation) for your labeling specifications.

## General ordering data

|            |                            |   |  |
|------------|----------------------------|---|--|
| Type       | WAD 8 MC SDR               | Version   |  |
| Order No.  | <a href="#">1112970000</a> | Group markers, Cover, 33.3 x 8 mm, Pitch in mm (P): 8.00 WDU 4, |  |
| GTIN (EAN) | 4032248891788              | WEW 35/2, ZEW 35/2, To customer specification                   |  |
| Qty.       | 12 ST                      |   |  |

## AEB 35 SCL/1 V0

Weidmüller Interface GmbH &amp; Co. KG

Klingenbergstraße 26

D-32758 Detmold

Germany

## Accessories

www.weidmueller.com

## Plus



The Dekafix (DEK) marker is the universal marker for all conductor and plug-in connectors as well as for electronic sub-assemblies. The system is ideal for short number sequences and covers a wide range of ready-printed markers.

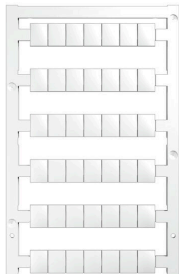
Strips for fast installation in only one work step. The printing is easy to read, rich in contrast and available in various widths.

- Large range of ready-to-use markers
  - Strips for fast installation
  - Terminal markers, suitable for all Weidmüller cable connectors
  - Available as blank MultiCard or with standard printing
- For custom printing: Please send us a file of our labeling software M-Print PRO or M-Print PRO Online (without installation) for your labeling specifications.

## General ordering data

|            |                            |   |
|------------|----------------------------|---|
| Type       | DEK 5/8 PLUS MC NE WS      | Version   |
| Order No.  | <a href="#">1046350000</a> | Dekafix, Terminal marker, 5 x 8 mm, Pitch in mm (P): 8.00 |
| GTIN (EAN) | 4032248782055              | Weidmueller, white  |
| Qty.       | 800 ST                     |   |

## Blank



WS markers are the perfect match for the W-series connectors. Thanks to their system compatibility, the WS tags can also be used with the I-series and the Z-series. The large marking surfaces do not only permit long character strings but also multi-line text. WS markers are ideal for labels with long, customised character strings. Thanks to the proven MultiCard format, printing with PrintJet CONNECT oder/or Plotter is possible.

- Can be fitted in strips or individually
- Markers in proven MultiCard format

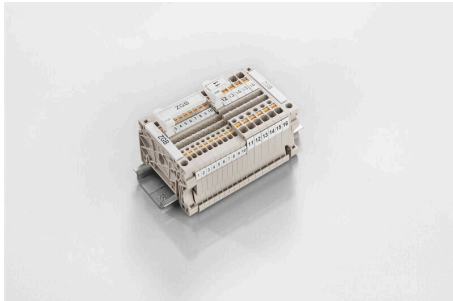
For custom printing: Please send us a file of our labeling software M-Print PRO or M-Print PRO Online (without installation) for your labeling specifications.

## General ordering data

|            |                            |  |
|------------|----------------------------|--|
| Type       | WS 10/8 PLUS MC NE WS      | Version  |
| Order No.  | <a href="#">1905950000</a> | WS, Terminal marker, 10 x 8 mm, Pitch in mm (P): 8.00 Weidmueller, |
| GTIN (EAN) | 4032248528103              | white  |
| Qty.       | 420 ST                     |  |

## Accessories

### ZGB pivotable group tag holder



The ZGB 15 is a hinged group tag carrier. The tag carrier can hold the dekafix 5, WS 12/5 terminal markers or the inlay tag ESO 15.

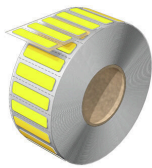
The ZGB 30 is a hinged group tag carrier. The tag carrier can hold the dekafix 5, WS 12/5 terminal markers or the inlay tag ESO 7.

Inlay tags and protective strips can be found under "Accessories".

#### General ordering data

|            |                            |   |  |
|------------|----------------------------|---|--|
| Type       | ZGB 30                     | Version   |  |
| Order No.  | <a href="#">1611930000</a> | Terminal markers, Terminal marker, 32 x 7 mm, Pitch in mm (P): 5.00 |  |
| GTIN (EAN) | 4008190002251              | Weidmueller, white  |  |
| Qty.       | 20 ST                      |   |  |

### WAD



#### MultiMark

With MultiMark you have a fast and reliable marking system at your disposal to enable virtually any kind of marking. Connectors, conductors, cables or devices – the MultiMark product family offers a well-structured, practical range of markers which can be used in combination with our advanced M-Print® PRO configuration software for all areas of use.

Your benefits with MultiMark

- Firm hold and durable printing
- Continuous strips save installation time
- Easy mounting thanks to an innovative composite material
- Large label field for optimal legibility
- High flexibility thanks to manufacturer independence

#### General ordering data

|            |                            |  |  |
|------------|----------------------------|--|--|
| Type       | WAD-FO 5 MM WS             | Version  |  |
| Order No.  | <a href="#">2969370000</a> | Terminal marker, 5 x 33.3 mm, Weidmueller, white |  |
| GTIN (EAN) | 4099986783959              |  |  |
| Qty.       | 250 ST                     |  |  |