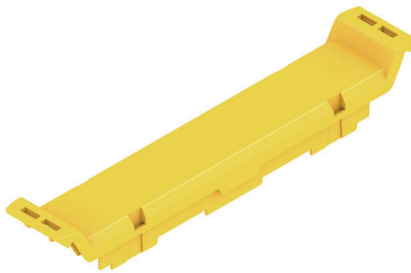


CH20M17 FC TYL 2083

Weidmüller Interface GmbH & Co. KG
Klingenbergstraße 26
D-32758 Detmold
Germany

www.weidmueller.com

Product image

The front element of the CH20M housing offers you numerous options for individual design and functionality. You can choose between various printing methods such as pad printing and laser engraving to implement your designs precisely and attractively.

Laser cut-outs for electronic components are also possible. Markers can also be used. The front element can be equipped with or without a hinged lid.

General ordering data

| | |
|------------|--|
| Version | Front element, OMNIMATE Housing - series CH20M Traffic yellow, Front element, Width: 17.5 mm |
| Order No. | 2655070000 |
| Type | CH20M17 FC TYL 2083 |
| GTIN (EAN) | 4050118666793 |
| Qty. | 50 items |

CH20M17 FC TYL 2083

Weidmüller Interface GmbH & Co. KG
 Klingenbergstraße 26
 D-32758 Detmold
 Germany

www.weidmueller.com

Technical data

Approvals

| | |
|------|---------|
| ROHS | Conform |
|------|---------|

Dimensions and weights

| | | | |
|--------|---------|-----------------|-------------|
| Depth | 15.5 mm | Depth (inches) | 0.6102 inch |
| Height | 100 mm | Height (inches) | 3.937 inch |
| Width | 17.5 mm | Width (inches) | 0.689 inch |
| Length | 0 mm | Net weight | 5.2 g |

Temperatures

| | | | |
|---------------------|---|-----------------------------|--------------|
| Ambient temperature | -25 °C...85 °C | Operating temperature range | -40...120 °C |
| Humidity | 5 - 93% rel. humidity, Tu = 40°C, no condensation | | |

Environmental Product Compliance

| | |
|------------------------|-----------------------------|
| RoHS Compliance Status | Compliant without exemption |
| REACH SVHC | No SVHC above 0.1 wt% |

Material data

| | | | |
|---------------------------|---------|----------------------------------|-------------|
| UL 94 flammability rating | V-0 | Insulating material | PA 66 GF 30 |
| Insulating material group | I | Surface finish | untreated |
| Basic material | Plastic | Comparative Tracking Index (CTI) | 600 ≤ CTI |

General data

| | | | |
|------------------------|----------------|---|--------------------------------------|
| Colour | Traffic yellow | Protection degree | IP20 in installed state |
| Colour chart (similar) | RAL 1023 | Information regarding whole assembly, see referenced articles | CH20M17 B BK/OR 2010 |
| Encapsulation option | No | | |

Component properties

| | | | |
|----------------------|----|----------------------|----|
| Flip cover mountable | No | Marker integrateable | No |
|----------------------|----|----------------------|----|

Individualization options

| | | | |
|------------------------------------|-------------------------------|--------------------------------------|---------------------------|
| Customer specific cutouts possible | Yes | Customer specific labelling possible | Yes |
| Customer specific order process | See guideline under downloads | Processing possibilities | Laser processing, Milling |

Classifications

| | | | |
|-------------|-------------|-------------|-------------|
| ETIM 8.0 | EC001031 | ETIM 9.0 | EC001031 |
| ETIM 10.0 | EC001031 | ECLASS 14.0 | 27-19-06-03 |
| ECLASS 15.0 | 27-19-06-03 | | |

Drawings

Product image



Dimensioned drawing

