

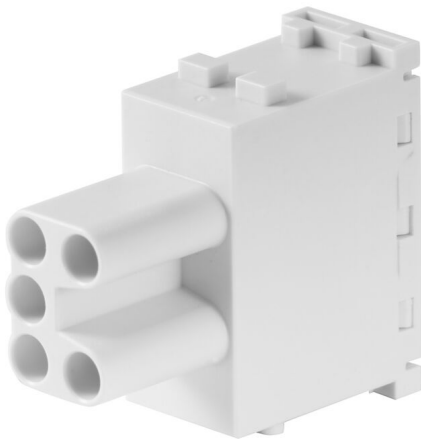
HDC MHE 5 FP**Weidmüller Interface GmbH & Co. KG**

Klingenbergstraße 26

D-32758 Detmold

Germany

www.weidmueller.com

**Flexible**

The four module sizes make for individual plug solutions that save a huge amount of space. The smaller pitch translates into an optimised design too.

General ordering data

| | |
|------------|--|
| Version | Signal module, 400 V, 16 A, Number of poles: 5, PUSH IN with actuator, Female, Required plug-in slots: 1 |
| Order No. | 2636190000 |
| Type | HDC MHE 5 FP |
| GTIN (EAN) | 4050118692594 |
| Qty. | 1 items |

HDC MHE 5 FP

Weidmüller Interface GmbH & Co. KG

Klingenbergstraße 26

D-32758 Detmold

Germany

www.weidmueller.com

Technical data

Approvals

Approvals



ROHS Conform

UL File Number Search [UL Website](#)

Certificate No. (cURus) E92202

Dimensions and weights

| | | | |
|------------|---------|-----------------|-------------|
| Depth | 34 mm | Depth (inches) | 1.3386 inch |
| Height | 38.9 mm | Height (inches) | 1.5315 inch |
| Width | 14.5 mm | Width (inches) | 0.5709 inch |
| Net weight | 19.73 g | | |

Temperatures

Limit temperature -40 °C ... 125 °C

Environmental Product Compliance

RoHS Compliance Status Compliant with exemption

RoHS Exemption (if applicable/known) 6c

REACH SVHC Lead 7439-92-1, Potassium perfluorobutane sulfonate 29420-49-3

SCIP b67daa31-7dca-434d-8290-da7fb52f83a2

General data

| | | | |
|-----------------------------------|----------|--------------------------------------|---------------------------------------|
| Number of poles | 5 | UL 94 flammability rating | V-0 |
| Insulation resistance | 1012 Ω | Plugging cycles | ≥ 500 |
| Type | Female | Surge voltage category | III |
| Pollution severity | 3 | Basic material | Polycarbonate, glass fibre reinforced |
| Series | ModuPlug | Rated voltage (DIN EN 61984) | 400 V |
| Rated voltage according to UL/CSA | 600 V | Rated impulse voltage (DIN EN 61984) | 6 kV |
| Rated current (DIN EN 61984) | 16 A | Required plug-in slots | 1 |

PE connection data

Connection type PE Screw connection via module frame

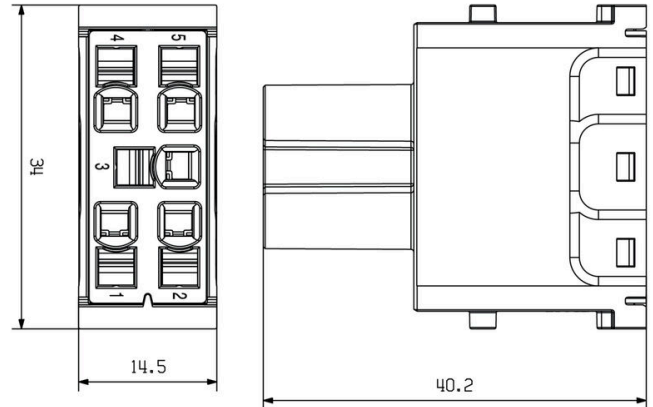
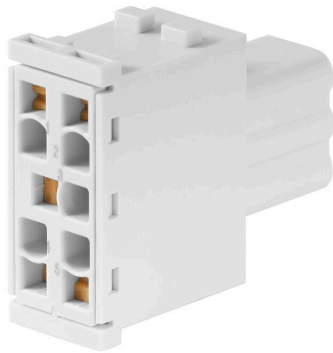
Version

| | | | |
|---|-----------------------|---|---------------------|
| Wire connection cross section AWG, max. | AWG 14 | Stripping length, rated connection | 10 mm |
| Type of connection | PUSH IN with actuator | Wire connection cross section AWG, min. | AWG 20 |
| Conductor cross-section, max. | 2.5 mm ² | Conductor cross-section, min. | 0.5 mm ² |

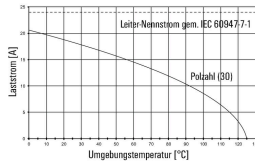
Classifications

| | | | |
|-------------|-------------|-------------|-------------|
| ETIM 8.0 | EC000438 | ETIM 9.0 | EC000438 |
| ETIM 10.0 | EC000438 | ECLASS 14.0 | 27-44-02-17 |
| ECLASS 15.0 | 27-44-02-17 | | |

Product image



HDC MHE 5 FQT mit HDC MHE 5 MQT / H07V-K2,5



HDC MHE 5 FQT with HDC MHE 5 MQT / H07V-K2,5

