

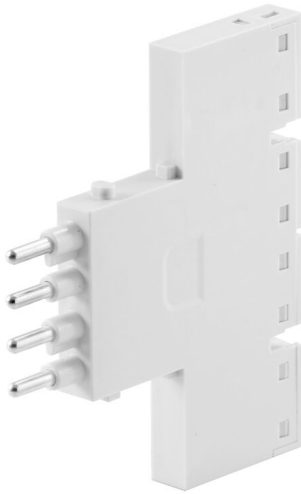
HDC MHE 4X2 MP**Weidmüller Interface GmbH & Co. KG**

Klingenbergstraße 26

D-32758 Detmold

Germany

www.weidmueller.com

**Flexible**

The four module sizes make for individual plug solutions that save a huge amount of space. The smaller pitch translates into an optimised design too.

General ordering data

Version	Signal module, 250 V, 16 A, Number of poles: 4, PUSH IN with actuator, Pin, Required plug-in slots: 0.5
Order No.	2636090000
Type	HDC MHE 4X2 MP
GTIN (EAN)	4050118692839
Qty.	1 items

HDC MHE 4X2 MP

Weidmüller Interface GmbH & Co. KG
Klingenbergstraße 26
D-32758 Detmold
Germany

www.weidmueller.com

Technical data

Approvals

Approvals



ROHS Conform

UL File Number Search [UL Website](#)

Certificate No. (cURus) E92202

Dimensions and weights

Depth	70.5 mm	Depth (inches)	2.7756 inch
Height	63 mm	Height (inches)	2.4803 inch
Width	7.15 mm	Width (inches)	0.2815 inch
Net weight	24.52 g		

Temperatures

Limit temperature -40 °C ... 125 °C

Environmental Product Compliance

RoHS Compliance Status Compliant with exemption

RoHS Exemption (if applicable/known) 6c

REACH SVHC Lead 7439-92-1, Potassium perfluorobutane sulfonate 29420-49-3

SCIP 9ed66ce7-2fe8-4987-bb46-06cab3f02292

General data

Number of poles	4	Number of potentials	2
UL 94 flammability rating	V-0	Insulation resistance	1012 Ω
Plugging cycles	≥ 500	Type	Pin
Surge voltage category	III	Pollution severity	3
Basic material	Polycarbonate, glass fibre reinforced	Series	ModuPlug
Rated voltage (DIN EN 61984)	250 V	Rated voltage according to UL/CSA	600 V
Rated impulse voltage (DIN EN 61984)	4 kV	Rated current (DIN EN 61984)	16 A
Required plug-in slots	0.5		

PE connection data

Connection type PE Screw connection via module frame

Version

Wire connection cross section AWG, max.	AWG 14	Stripping length, rated connection	10 mm
Type of connection	PUSH IN with actuator	Wire connection cross section AWG, min.	AWG 20
Conductor cross-section, max.	2.5 mm ²	Conductor cross-section, min.	0.5 mm ²

Important note

Product information Only to be used in combination with mounting brackets (2716790000 / 2716800000) of RockStar wall mounting housings IP66.

HDC MHE 4X2 MP

Weidmüller Interface GmbH & Co. KG
Klingenbergstraße 26
D-32758 Detmold
Germany

www.weidmueller.com

Technical data

Classifications

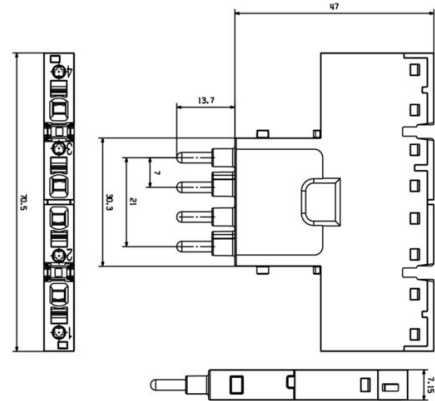
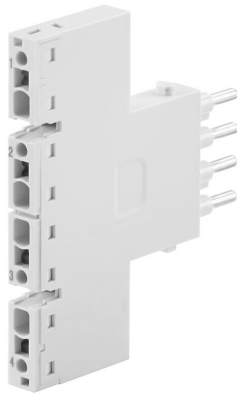
ETIM 8.0	EC000438	ETIM 9.0	EC000438
ETIM 10.0	EC000438	ECLASS 14.0	27-44-02-17
ECLASS 15.0	27-44-02-17		

HDC MHE 4X2 MP

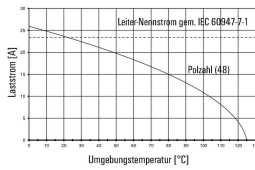
Weidmüller Interface GmbH & Co. KG
 Klingenbergstraße 26
 D-32758 Detmold
 Germany

Drawings

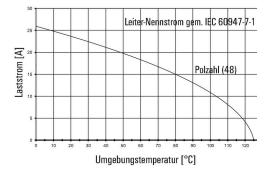
www.weidmueller.com



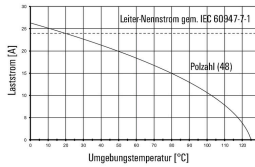
HDC MHE 4X2 MQT mit HDC MHE 4FQT / H07V-K2,5



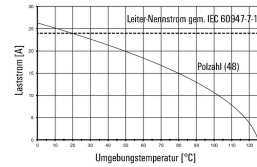
HDC MHE 4X2 MQT mit HDC MHE 4FQT / H07V-K2,5



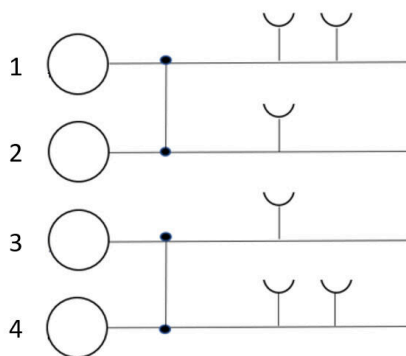
HDC MHE 4X2 FQT mit HDC MHE 4MQT / H07V-K2,5



HDC MHE 4X2 FQT mit HDC MHE 4MQT / H07V-K2,5



HDC MHE 4X2



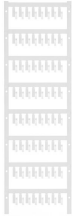
HDC MHE 4X2 MP

Weidmüller Interface GmbH & Co. KG
 Klingenbergstraße 26
 D-32758 Detmold
 Germany

www.weidmueller.com

Accessories

Marker



In addition to heavy-duty connectors, RockStar® includes the appropriate accessories for effective, functional and safe system cabling; e.g. coding systems, shield clamps, cover plates and replacement seals

General ordering data

Type	HDC MMARK 4	Version	
Order No.	2710590000	Marking tags, Heavy duty connector assemblies	
GTIN (EAN)	4050118783902		
Qty.	640 ST		

Cross-Connector Bridge



In addition to heavy-duty connectors, RockStar® includes the appropriate accessories for effective, functional and safe system cabling; e.g. coding systems, shield clamps, cover plates and replacement seals

General ordering data

Type	HDC MXCC2 4X	Version	
Order No.	2709710000	Cross-connector bridge, Heavy duty connector assemblies	
GTIN (EAN)	4050118805659		
Qty.	50 ST		
Type	HDC MXCC3 4X	Version	
Order No.	2709720000	Cross-connector bridge, Heavy duty connector assemblies	
GTIN (EAN)	4050118805666		
Qty.	50 ST		
Type	HDC MXCC4 4X	Version	
Order No.	2709730000	Cross-connector bridge, Heavy duty connector assemblies	
GTIN (EAN)	4050118805673		
Qty.	50 ST		
Type	HDC MXCC5 4X	Version	
Order No.	2709740000	Cross-connector bridge, Heavy duty connector assemblies	
GTIN (EAN)	4050118805680		
Qty.	50 ST		
Type	HDC MXCC6 4X	Version	
Order No.	2709750000	Cross-connector bridge, Heavy duty connector assemblies	
GTIN (EAN)	4050118805703		
Qty.	50 ST		

HDC MHE 4X2 MP

Weidmüller Interface GmbH & Co. KG
 Klingenbergstraße 26
 D-32758 Detmold
 Germany

www.weidmueller.com

Accessories

Type	HDC MXCC7 4X	Version
Order No.	2709770000	Cross-connector bridge, Heavy duty connector assemblies
GTIN (EAN)	4050118805710	
Qty.	20 ST	
Type	HDC MXCC8 4X	Version
Order No.	2709780000	Cross-connector bridge, Heavy duty connector assemblies
GTIN (EAN)	4050118805727	
Qty.	20 ST	
Type	HDC MXCC9 4X	Version
Order No.	2709790000	Cross-connector bridge, Heavy duty connector assemblies
GTIN (EAN)	4050118805734	
Qty.	20 ST	
Type	HDC MXCC10 4X	Version
Order No.	2709800000	Cross-connector bridge, Heavy duty connector assemblies
GTIN (EAN)	4050118805741	
Qty.	20 ST	
Type	HDC MXCC11 4X	Version
Order No.	2709810000	Cross-connector bridge, Heavy duty connector assemblies
GTIN (EAN)	4050118805758	
Qty.	20 ST	
Type	HDC MXCC12 4X	Version
Order No.	2709820000	Cross-connector bridge, Heavy duty connector assemblies
GTIN (EAN)	4050118805765	
Qty.	20 ST	

HDC MHE 4X2 MP

Weidmüller Interface GmbH & Co. KG
 Klingenbergstraße 26
 D-32758 Detmold
 Germany

Counterpart

www.weidmueller.com

Electrical modules



Flexible

The four module sizes make for individual plug solutions that save a huge amount of space. The smaller pitch translates into an optimised design too.

General ordering data

Type	HDC MHE 4 FP	Version
Order No.	2635990000	Signal module, 250 V, 16 A, Number of poles: 4, PUSH IN with actuator, Female, Required plug-in slots: 0.5
GTIN (EAN)	4050118692792	
Qty.	1 ST	
Type	HDC MHE 4X FP	Version
Order No.	2636060000	Signal module, 250 V, 16 A, Number of poles: 4, PUSH IN with actuator, Female, Required plug-in slots: 0.5
GTIN (EAN)	4050118692808	
Qty.	1 ST	
Type	HDC MHE 4X2 FP	Version
Order No.	2636080000	Signal module, 250 V, 16 A, Number of poles: 4, PUSH IN with actuator, Female, Required plug-in slots: 0.5
GTIN (EAN)	4050118692822	
Qty.	1 ST	