

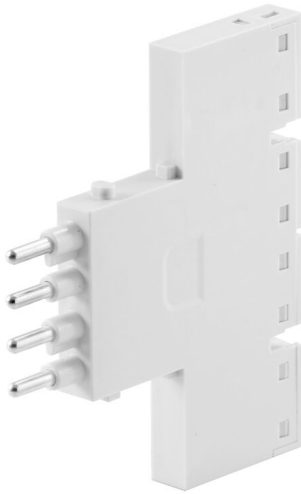
**HDC MHE 4X2 MP****Weidmüller Interface GmbH & Co. KG**

Klingenbergstraße 26

D-32758 Detmold

Germany

www.weidmueller.com

**Flexible**

The four module sizes make for individual plug solutions that save a huge amount of space. The smaller pitch translates into an optimised design too.

**General ordering data**

Version	Signal module, 250 V, 16 A, Number of poles: 4, PUSH IN with actuator, Pin, Required plug-in slots: 0.5
Order No.	<a href="#">2636090000</a>
Type	HDC MHE 4X2 MP
GTIN (EAN)	4050118692839
Qty.	1 items

## HDC MHE 4X2 MP

Weidmüller Interface GmbH & Co. KG  
Klingenbergstraße 26  
D-32758 Detmold  
Germany

www.weidmueller.com

## Technical data

## Approvals

Approvals



ROHS Conform

UL File Number Search [UL Website](#)

Certificate No. (cURus) E92202

## Dimensions and weights

Depth	70.5 mm	Depth (inches)	2.7756 inch
Height	63 mm	Height (inches)	2.4803 inch
Width	7.15 mm	Width (inches)	0.2815 inch
Net weight	24.52 g		

## Temperatures

Limit temperature -40 °C ... 125 °C

## Environmental Product Compliance

RoHS Compliance Status Compliant with exemption

RoHS Exemption (if applicable/known) 6c

REACH SVHC Lead 7439-92-1, Potassium perfluorobutane sulfonate 29420-49-3

SCIP 9ed66ce7-2fe8-4987-bb46-06cab3f02292

## General data

Number of poles	4	Number of potentials	2
UL 94 flammability rating	V-0	Insulation resistance	1012 Ω
Plugging cycles	≥ 500	Type	Pin
Surge voltage category	III	Pollution severity	3
Basic material	Polycarbonate, glass fibre reinforced	Series	ModuPlug
Rated voltage (DIN EN 61984)	250 V	Rated voltage according to UL/CSA	600 V
Rated impulse voltage (DIN EN 61984)	4 kV	Rated current (DIN EN 61984)	16 A
Required plug-in slots	0.5		

## PE connection data

Connection type PE Screw connection via module frame

## Version

Wire connection cross section AWG, max.	AWG 14	Stripping length, rated connection	10 mm
Type of connection	PUSH IN with actuator	Wire connection cross section AWG, min.	AWG 20
Conductor cross-section, max.	2.5 mm <sup>2</sup>	Conductor cross-section, min.	0.5 mm <sup>2</sup>

## Important note

Product information Only to be used in combination with mounting brackets (2716790000 / 2716800000) of RockStar wall mounting housings IP66.

**HDC MHE 4X2 MP**

**Weidmüller Interface GmbH & Co. KG**  
Klingenbergstraße 26  
D-32758 Detmold  
Germany

[www.weidmueller.com](http://www.weidmueller.com)

**Technical data**

**Classifications**

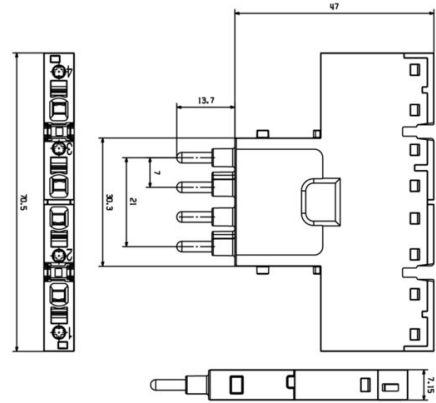
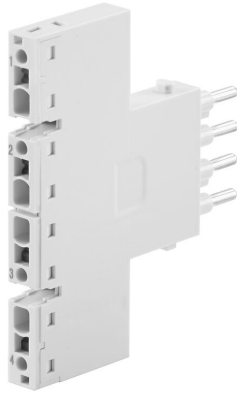
ETIM 8.0	EC000438	ETIM 9.0	EC000438
ETIM 10.0	EC000438	ECLASS 14.0	27-44-02-17
ECLASS 15.0	27-44-02-17		

HDC MHE 4X2 MP

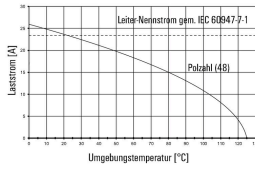
Weidmüller Interface GmbH & Co. KG  
 Klingenbergstraße 26  
 D-32758 Detmold  
 Germany

Drawings

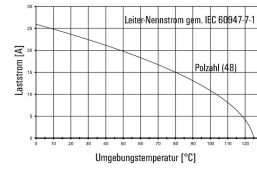
www.weidmueller.com



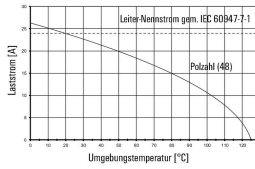
HDC MHE 4X2 MQT mit HDC MHE 4FQT / H07V-K2,5



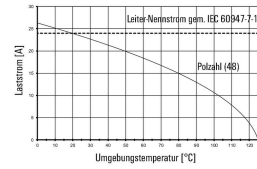
HDC MHE 4X2 MQT mit HDC MHE 4FQT / H07V-K2,5



HDC MHE 4X2 FQT mit HDC MHE 4MQT / H07V-K2,5



HDC MHE 4X2 FQT mit HDC MHE 4MQT / H07V-K2,5



HDC MHE 4X2

