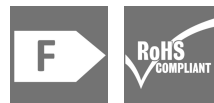


WIL-LWXXXX-4000D024-350SXX0.3BM12GXXXX**Weidmüller Interface GmbH & Co. KG**Klingenbergstraße 26
D-32758 Detmold
Germany

www.weidmueller.com



The WIL-LED lights family: Only 8mm (9.4mm with magnet) high LED lamp for 24V DC with very high luminous efficacy and high Lifespan (greater 60 000h). Very robust construction, by full potting and metal housing - waterproof (IP67). Due to its 4000K light color, neutral white, suitable for the various applications. Very easy to connect thanks to the M12 connection. Due to the low power consumption, a small enough power supply with 24V for operation.

General ordering data

Order No.	2633680000
Type	WIL-LWXXXX-4000D024-350SXX0.3B-M12GXXXX
GTIN (EAN)	4050118648966
Qty.	1 items

WIL-LWXXXX-4000D024-350SXX0.3BM12GXXXX

Weidmüller Interface GmbH & Co. KG
 Klingenbergstraße 26
 D-32758 Detmold
 Germany

www.weidmueller.com

Technical data

Approvals

Approvals



ROHS	Conform
------	---------

UL File Number Search	UL Website
-----------------------	----------------------------

Certificate no. (cULus)	E354496
-------------------------	---------

Dimensions and weights

Depth	40 mm	Depth (inches)	1.5748 inch
Height	8 mm	Height (inches)	0.315 inch
Width	350 mm	Width (inches)	13.7795 inch
Net weight	366 g		

Temperatures

Operating temperature	-20 - 60°C
-----------------------	------------

Environmental Product Compliance

RoHS Compliance Status	Compliant with exemption
RoHS Exemption (if applicable/known)	6c
REACH SVHC	Lead 7439-92-1
SCIP	bf1e8170-69bb-4440-b3e0-4da351a9a3b0
EPREL Registration number	1324396

Cable technical specifications

Cable Material	PUR	Sheathing colour	black
Housing main material	hard anodised aluminium	Cable length	0.3 m
Core cross-section	0.34 mm ²		

Connection data

LED Modul is attachable	no	Version	pin, straight
Coding	A-coded	Connection thread	M12
Tightening torque	0.8 Nm	Wiring	Pin 4 (Strand: black) control white LED, Pin 3 (Strand: blue)

Electric data

Rated voltage	24 V DC	Rated current	0.462 A
Power	11.3 W	Dimmable	Yes

General technical data

Type of connection	Pre-assembled cable	Electronic equipment on rolling stock	No
Recommended class according to UL for NEC Class 2 use of an power supply		Shape of the LED module	Rectangular
Number of LEDs	21	Light colour (CCT)	4000K, Neutral white
Luminosity	390 cd	Light current	1359 lm
Emitting angle	40 °	Illumination level	440 lux
Operating life	60.000 h	Type of mounting	Screw mounting

WIL-LWXXXX-4000D024-350SXX0.3BM12GXXXX

Weidmüller Interface GmbH & Co. KG

Klingenbergstraße 26

D-32758 Detmold

Germany

www.weidmueller.com

Technical data

Drill hole spacing	335 mm	Impact resistance	IK05
Protection degree	IP67	Efficiency class (according to EU Directive No. 874/2012)	Not required

Material data

Material of LED cover	ESG	Housing main material	hard anodised aluminium
Threaded ring material	PA	Material of end caps	PBT

Classifications

ETIM 8.0	EC000996	ETIM 9.0	EC000996
ETIM 10.0	EC000996	ECLASS 14.0	27-11-06-35
ECLASS 15.0	27-11-06-35		

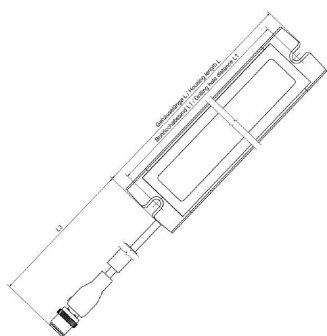
WIL-LWXXXX-4000D024-350SXX0.3BM12GXXXX

Weidmüller Interface GmbH & Co. KG
Klingenbergstraße 26
D-32758 Detmold
Germany

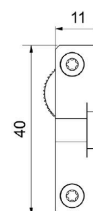
www.weidmueller.com

Drawings

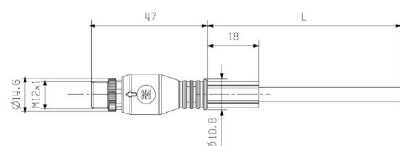
Dimensioned drawing



Detailed drawing



Detailed drawing



Pole scheme

