

## PRO TOPDC 24V/24V 10A

**Weidmüller Interface GmbH & Co. KG**

Klingenbergstraße 26

D-32758 Detmold

Germany

[www.weidmueller.com](http://www.weidmueller.com)



PROtop DCDC converters are used for safe electrical isolation to avoid ground loops that can occur when supplying field devices in production or process plants. DCDC converters can be used on long supply lines to refresh the supply voltage. The integrated ORing MOSFET reliably decouples possible internal short circuits. It allows direct parallel connection of ACDC and DCDC converters of the PROtop series for redundancy purposes or to increase power. This makes the use of the otherwise common diode or redundancy modules obsolete. Furthermore, PROtop DCDC converters feature the powerful DCL technology – and their communication module allows full data transparency and remote control.

### General ordering data

Version	DC/DC converter
Order No.	<a href="#">2627640000</a>
Type	PRO TOPDC 24V/24V 10A
GTIN (EAN)	4050118661583
Qty.	1 items

## PRO TOPDC 24V/24V 10A

**Weidmüller Interface GmbH & Co. KG**  
 Klingenbergstraße 26  
 D-32758 Detmold  
 Germany

www.weidmueller.com

## Technical data

### Approvals

Approvals



ROHS Conform

### Dimensions and weights

Depth	125 mm	Depth (inches)	4.9212 inch
Height	130 mm	Height (inches)	5.1181 inch
Width	43 mm	Width (inches)	1.6929 inch
Net weight	1000 g		

### Temperatures

Storage temperature	-40 °C...85 °C	Operating temperature	-25 °C...70 °C
Humidity at operating temperature	5...95 %, no condensation	Start-up	≥ -40 °C

### Environmental Product Compliance

RoHS Compliance Status	Compliant with exemption
RoHS Exemption (if applicable/known)	6c, 7a, 7cl
REACH SVHC	Lead 7439-92-1
SCIP	6d8cdf22-8230-4af8-86c8-3558c716666d

### Input

Connection system	PUSH IN with actuator	
Rated input voltage	24 V DC	
Input voltage, max.	31.2 V	
Input voltage, min.	14 V	
Wire connection method	PUSH IN	
Input fuse (internal)	Yes	
DC input voltage range	14 V...31.2 V (linear Derating from 18 V... 14 V, 60% rated load @ Uin 14 V)	
Inrush current	Max. 10 A	
Inrush Current Limitation	Yes	
Current consumption in relation to the input voltage	Voltage type	DC
	Input voltage	24 V
	Input current	11 A
	Voltage type	DC
	Input current	15 A
Nominal power consumption	263.7 VA	

### Output

Output power	240 W
Connection system	PUSH IN with actuator
Rated output voltage	24 V DC ± 1 %
Residual ripple, breaking spikes	<40 mVPP@25 °C
Parallel connection option	yes, max 10

## PRO TOPDC 24V/24V 10A

**Weidmüller Interface GmbH & Co. KG**  
 Klingenbergstraße 26  
 D-32758 Detmold  
 Germany

www.weidmueller.com

### Technical data

Output voltage, max.	28.8 V	
Output voltage, min.	22.5 V	
Output current, max.	26 A	
Wire connection method	PUSH IN	
Output voltage, note	adjustable with potentiometer or communication module	
Nominal output current for Unom	10 A @ 60 °C	
Capacitive load	unrestricted	
Mains failure bridge-over time	Mains failure bridge-over time, min.	10 ms
	Input voltage type	DC
	Input voltage	24 V
	Output current	10 A
	Output voltage	24 V
Protection against inverse voltage	Yes	
DCL - peak load reserve	Boost duration	15 ms
	Multiple of the rated current	600 %
	Boost duration	5 s
	Multiple of the rated current	200 %
Ramp-up time	≤ 100 ms	

### General data

Degree of efficiency	91%	Protection degree	IP20
Surge voltage category	I, II, III	Mounting position, installation notice	On TS 35 mounting rail, 50 mm clearance above and below for free air supply.
Housing version	Metal, corrosion resistant	Derating	> 60°C (2.5% / 1°C)
Adjacent	No	Conformal coating	No
Power loss, idling	5 W	Short-circuit protection	Yes
Power loss, nominal load	23.7 W		

### EMC / shock / vibration

Shock resistance IEC 60068-2-27	30 g in all directions	Noise emission in accordance with EN55032	Class B
Interference immunity test acc. to	EN 55032:2015, EN 55035:2017, EN 61000-6-1:2007, EN 61000-6-2:2005, EN 61000-6-3:2007/ A1:2011, EN 61000-6-4:2007/ A1:2011, IEC 61000-4-2, IEC 61000-4-3, DIN EN 61000-4-4, EN 61000-4-5:2005, EN 61000-4-6:2008, IEC 61000-4-8	Vibration resistance IEC 60068-2-6	2.3 g (on DIN rail), 4 g (with direct mounting)

### Insulation coordination

Surge voltage category	I, II, III	Protection class	III, with no ground connection, for SELV
Insulation voltage, input/output	1.41 kV	Insulation voltage input / earth	1.41 kV
Insulation voltage output / earth	0.7 kV		

## PRO TOPDC 24V/24V 10A

**Weidmüller Interface GmbH & Co. KG**  
 Klingenbergstraße 26  
 D-32758 Detmold  
 Germany

www.weidmueller.com

## Technical data

### Electrical safety (applied standards)

Electrical machine equipment	Acc. to EN60204	Safety extra-low voltage	SELV acc. to IEC 60950-1, PELV according to EN 60204-1
Safety transformers for switch-mode power supplies	According to EN 61558-2-16		

### Connection data (input)

Connection system	PUSH IN with actuator	Number of terminals	2 for (+, -)
Screwdriver blade	0.6 x 3.5	Conductor cross-section, AWG/kcmil , max.	12 AWG
Conductor cross-section, AWG/kcmil , min.	20 AWG	Wire connection cross section, flexible (input), max.	2.5 mm <sup>2</sup>
Conductor cross-section, flexible , min.	0.5 mm <sup>2</sup>	Conductor cross-section, rigid , max.	1.5 mm <sup>2</sup>
Conductor cross-section, rigid , min.	0.5 mm <sup>2</sup>		

### Connection data (output)

Connection system	PUSH IN with actuator	Number of terminals	4 (++ / -)
Conductor cross-section, AWG/kcmil , max.	12 AWG	Conductor cross-section, AWG/kcmil , min.	26 AWG
Conductor cross-section, flexible , max.	2.5 mm <sup>2</sup>	Conductor cross-section, flexible , min.	0.2 mm <sup>2</sup>
Conductor cross-section, rigid , max.	2.5 mm <sup>2</sup>	Conductor cross-section, rigid , min.	0.2 mm <sup>2</sup>
Screwdriver blade	0.6 x 3.5		

### Connection data (signal)

Wire connection cross-section, flexible (signal), max.	1.5 mm <sup>2</sup>	Wire connection method	PUSH IN
Wire cross-section, AWG/kcmil , max.	16	Wire cross-section, solid , min.	0.14 mm <sup>2</sup>
Wire cross-section, solid , max.	1.5 mm <sup>2</sup>	Wire connection cross-section, flexible (signal), min.	0.14 mm <sup>2</sup>
Wire cross-section, AWG/kcmil , min.	26 mm <sup>2</sup>		

### Signalling

Floating contact	Yes	LED green/red	Green: Operation (failure-free), Flashing green: advance warning I>90%, Green/red flashing: output switched off (switch-off mode), Flashing red: overload/error
Status relay (max. load)	Output voltage OK (30 V DC / 1 A)		

### Classifications

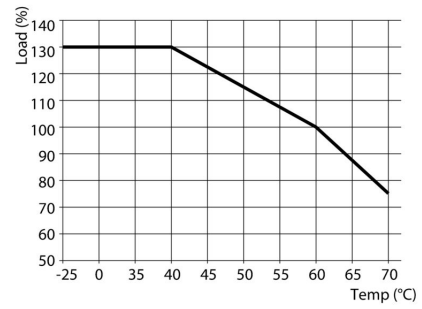
ETIM 8.0	EC002540	ETIM 9.0	EC002540
ETIM 10.0	EC002540	ECLASS 14.0	27-04-07-01
ECLASS 15.0	27-04-07-01		

**PRO TOPDC 24V/24V 10A**

**Weidmüller Interface GmbH & Co. KG**  
Klingenbergstraße 26  
D-32758 Detmold  
Germany

[www.weidmueller.com](http://www.weidmueller.com)

**Drawings**



## PRO TOPDC 24V/24V 10A

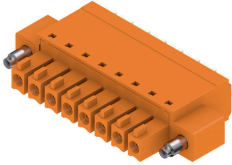
**Weidmüller Interface GmbH & Co. KG**

Klingenbergstraße 26  
D-32758 Detmold  
Germany

www.weidmueller.com

## Accessories

### BCF 3.81/180F



PUSH IN - Weidmüller's innovative connection system simplifies the wire connection process.

The benefits for users and applications:

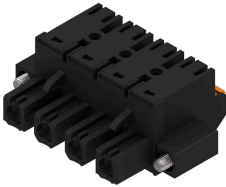
- High packaging density due to very low component height. Simply insert the prepared wire - finished
- High component density with the compact SCDN / SCDN-THR two-tier pin header
- Simplified processing due to integrated push buttons for opening the clamping unit
- Intuitive handling – since the wire-entry area and handling area are clearly separated
- tool-free locking and releasing when using Weidmüller's patented release latch (LR)

The Weidmüller plug-in connectors, pitch 3.81 mm (0.15 inch), are compatible with the layout of customary plug-in connectors, can be coded and provide space for printing.

#### General ordering data

Type	BCF 3.81/03/180F SN BK ...	Version
Order No.	<a href="#">1347850000</a>	PCB plug-in connector, female plug, 3.81 mm, Number of poles: 3,
GTIN (EAN)	4050118152517	180°, PUSH IN with push button, Clamping range, max. : 1.5 mm <sup>2</sup> ,
Qty.	50 ST	Box

### BLF 7.62HP/180F



180° female header with PUSH-IN connection technology for field wiring in 2.5 mm<sup>2</sup> with a 7.62 pitch.

Meets the requirements as per UL1059 600 V class C and IEC 61800-5-1

Variants: without flange, external flange, release latch.

#### General ordering data

Type	BLF 7.62HP/02/180F SN B...	Version
Order No.	<a href="#">1043910000</a>	PCB plug-in connector, female plug, 7.62 mm, Number of poles: 2,
GTIN (EAN)	4032248775453	180°, PUSH IN with actuator, Clamping range, max. : 2.5 mm <sup>2</sup> , Box
Qty.	72 ST	

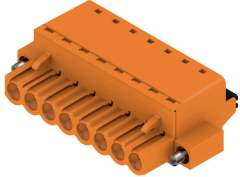
## PRO TOPDC 24V/24V 10A

**Weidmüller Interface GmbH & Co. KG**  
 Klingenbergstraße 26  
 D-32758 Detmold  
 Germany

## Accessories

www.weidmueller.com

### BLF 5.00HC/180F SN



Just as reliable as the millionfold proven original and featuring innovative details:

The BLF 5.00HC PUSH IN version of the BLZ 5.00HC female connector features a new connection system and a more compact design. Weidmüller's innovative PUSH IN spring connection system stands for the future of easy and tool-free wire connection. HC = High Current. In terms of versatility, the BLF 5.00HC offers just as much as the older versions:

- 3 tested-and-proven wire outlet directions provide the usual flexibility for application-specific design
- 4 flange variations and the patented release latch allow the locking concept to be based on the requirements of the user

### General ordering data

Type	BLF 5.00HC/04/180F SN B...	Version
Order No.	<a href="#">2568270000</a>	PCB plug-in connector, female plug, 5.00 mm, Number of poles: 4,
GTIN (EAN)	4050118578805	180°, PUSH IN with actuator, Clamping range, max. : 3.31 mm², Box
Qty.	72 ST	