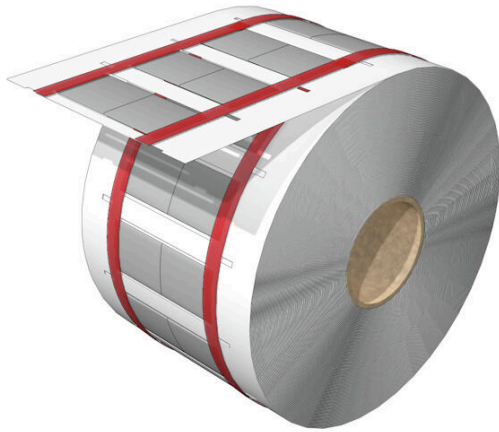


HS-FR 6.4-12.7/25 MM W

Weidmüller Interface GmbH & Co. KG
Klingenbergstraße 26
D-32758 Detmold
Germany

www.weidmueller.com



The heat-shrinkable sleeve is printable on 2 sides and can be used for marking and insulating cables and wires. The flexible, heat-shrink material enables a firm, perfect fit around the conductor and therefore saves space.

General ordering data

Version	Conductor and cable markers, 6.4 - 12.7 mm, 24.9 x 19.9 mm, white
Order No.	2621660000
Type	HS-FR 6.4-12.7/25 MM W
GTIN (EAN)	4050118625387
Qty.	1000 items

HS-FR 6.4-12.7/25 MM W

Weidmüller Interface GmbH & Co. KG
 Klingenbergstraße 26
 D-32758 Detmold
 Germany

www.weidmueller.com

Technical data

Approvals

ROHS	Conform
------	---------

Dimensions and weights

Depth	0.77 mm	Depth (inches)	0.0303 inch
Height	24.9 mm	Height (inches)	0.9803 inch
Width	19.9 mm	Width (inches)	0.7835 inch
Net weight	0.6 g		

Temperatures

Operating temperature range	-55...125 °C
-----------------------------	--------------

Environmental Product Compliance

RoHS Compliance Status	Compliant without exemption
REACH SVHC	No SVHC above 0.1 wt%

General data

Type of printing	neutral	Width	19.9 mm
Operating temperature range, max.	125 °C	Operating temperature range, min.	-55 °C
Colour	white	Halogen	No
Basic material	Polyolefine	Printed characters	without
Size of labelling field	19.9 x 24.9 mm	compatible printer	THM MULTIMARK , THM MULTIMARK PLUS
Operating temperature range	-55...125 °C	Number per roll	1000

Conductor and cable markers

Wire connection cross section AWG, max.	AWG 2	Halogen	No
Wire connection cross section AWG, min.	AWG 10	Conductor cross-section, max.	35 mm ²
Conductor cross-section, min.	6 mm ²	Conductor O.D., max.	12.7 mm
Conductor O.D., min.	6.4 mm	Rate of shrinkage	2:1
Recommended shrinking temperature	90 °C	Conductor O.D.	6.4 - 12.7 mm
Cross-section for connected wire	6 - 35 mm ²		

Classifications

ETIM 8.0	EC001530	ETIM 9.0	EC001530
ETIM 10.0	EC001530	ECLASS 14.0	27-28-11-02
ECLASS 15.0	27-28-11-02		

HS-FR 6.4-12.7/25 MM W

Weidmüller Interface GmbH & Co. KG
Klingenbergstraße 26
D-32758 Detmold
Germany

Drawings

www.weidmueller.com

