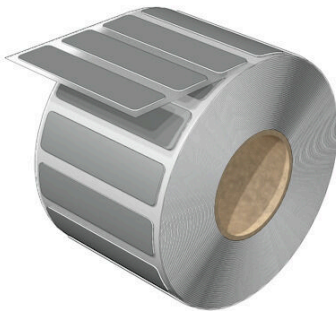


## CC-FO 15/60 MM SI

**Weidmüller Interface GmbH & Co. KG**  
Klingenbergstraße 26  
D-32758 Detmold  
Germany

[www.weidmueller.com](http://www.weidmueller.com)



Standard included: CC

Our systematically matching product range includes labels for identifying standardised components, as well as all-purpose and familiar formats such as the CC 85/54 marker for nameplates.

Your benefits with MultiMark

- “Different materials for various requirements”
- Can be used with equipment from many manufacturers
- Device markers with a familiar design

### General ordering data

Version	ClipCard, Device markers, 15 x 60 mm, silver
Order No.	<a href="#">2621330000</a>
Type	CC-FO 15/60 MM SI
GTIN (EAN)	4050118625714
Qty.	500 items

## CC-FO 15/60 MM SI

**Weidmüller Interface GmbH & Co. KG**  
 Klingenbergstraße 26  
 D-32758 Detmold  
 Germany

www.weidmueller.com

## Technical data

## Approvals

ROHS	Conform
------	---------

## Dimensions and weights

Depth	0.55 mm	Depth (inches)	0.0217 inch
Height	15 mm	Height (inches)	0.5906 inch
Width	60 mm	Width (inches)	2.3622 inch
Net weight	0.49 g		

## Temperatures

Operating temperature range	-30...80 °C
-----------------------------	-------------

## Environmental Product Compliance

RoHS Compliance Status	Compliant without exemption
REACH SVHC	No SVHC above 0.1 wt%

## General data

Adhesive	PE-foam with acrylic adhesive	Version	Self-adhesive, halogen-free
Width	60 mm	UL 94 flammability rating	V-0
Operating temperature range, max.	80 °C	Operating temperature range, min.	-30 °C
Colour	silver	Halogen	No
Basic material	Polyester	Printed characters	without
Size of labelling field	15 x 60 mm	Approval acc. to UL 969	Yes
compatible printer	<a href="#">THM MULTIMARK</a> , <a href="#">THM MULTIMARK PLUS</a>	Operating temperature range	-30...80 °C
Number per roll	500		

## Device markers

Halogen	No
---------	----

## Classifications

ETIM 8.0	EC001288	ETIM 9.0	EC001288
ETIM 10.0	EC001288	ECLASS 14.0	27-28-11-04
ECLASS 15.0	27-28-11-04		

**Drawings**

