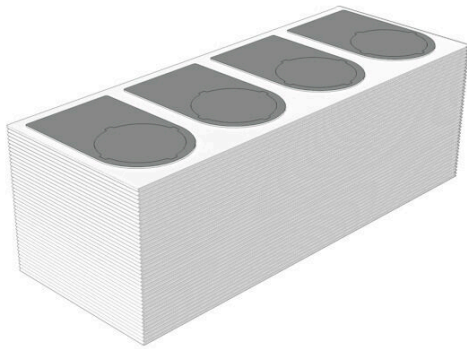


**SM-FO 36/18-30 MM SI**

**Weidmüller Interface GmbH & Co. KG**  
 Klingenbergstraße 26  
 D-32758 Detmold  
 Germany

www.weidmueller.com



Prevention of incorrect operation: SM

MultiMark device markers can be used with marking materials from different manufacturers. Wherever they are used, they ensure that all components, such as control and signalling devices from different vendors, are clearly assigned.

Your benefits with MultiMark

- “Different materials for various requirements”
- Can be used with equipment from many manufacturers
- Device markers with a familiar design

**General ordering data**

Version	SwitchMark, Device markers, 56 x 36 mm, silver
Order No.	<a href="#">2621210000</a>
Type	SM-FO 36/18-30 MM SI
GTIN (EAN)	4050118625837
Qty.	100 items

## SM-FO 36/18-30 MM SI

**Weidmüller Interface GmbH & Co. KG**  
 Klingenbergstraße 26  
 D-32758 Detmold  
 Germany

www.weidmueller.com

## Technical data

### Approvals

ROHS	Conform
------	---------

### Dimensions and weights

Depth	0.55 mm	Depth (inches)	0.0217 inch
Height	56 mm	Height (inches)	2.2047 inch
Width	36 mm	Width (inches)	1.4173 inch
Diameter	30 mm	Net weight	1.83 g

### Temperatures

Operating temperature range	-30...80 °C
-----------------------------	-------------

### Environmental Product Compliance

RoHS Compliance Status	Compliant without exemption
REACH SVHC	No SVHC above 0.1 wt%

### General data

Adhesive	PE-foam with acrylic adhesive	Version	halogen-free, Self-adhesive
Width	36 mm	UL 94 flammability rating	V-0
Operating temperature range, max.	80 °C	Operating temperature range, min.	-30 °C
Colour	silver	Halogen	No
Basic material	Polyester	Printed characters	without
Size of labelling field	36 x 21.75 mm	Approval acc. to UL 969	Yes
compatible printer	<a href="#">THM MULTIMARK</a> , <a href="#">THM MULTIMARK PLUS</a>	Operating temperature range	-30...80 °C
Number per roll	100		

### Device markers

Diameter	30 mm	Halogen	No
----------	-------	---------	----

### Classifications

ETIM 8.0	EC001288	ETIM 9.0	EC001288
ETIM 10.0	EC001288	ECLASS 14.0	27-28-11-04
ECLASS 15.0	27-28-11-04		

