

**SAI-H4-M12-S**

**Weidmüller Interface GmbH & Co. KG**  
Klingenbergstraße 26  
D-32758 Detmold  
Germany

www.weidmueller.com

**Product image**



**General ordering data**

Version	Y connector
Order No.	<a href="#">2616350000</a>
Type	SAI-H4-M12-S
GTIN (EAN)	4050118621365
Qty.	1 items

## SAI-H4-M12-S

Weidmüller Interface GmbH & Co. KG  
Klingenbergstraße 26  
D-32758 Detmold  
Germany

www.weidmueller.com

## Technical data

## Approvals

Approvals



ROHS Conform

UL File Number Search [UL Website](#)

Certificate no. (cULus) E310075

## Dimensions and weights

Net weight 50 g

## Environmental Product Compliance

RoHS Compliance Status Compliant with exemption

RoHS Exemption (if applicable/known) 6c

REACH SVHC Lead 7439-92-1

SCIP 4060c755-8d0b-4d43-bdb3-4ffabe9d7497

## Connection data

Single outlet 3 - plug-in connector	M12 socket	Group outlet - plug-in connector	M12 pin
Single outlet 1 - plug-in connector	M12 socket	Single outlet 2 - plug-in connector	M12 socket
Tightening torque	M12: 0.8 - 1.2 Nm		

## Technical data customisable plug-in connectors

Number of poles	4	Coding	S-coded
Contact surface	Gold-plated	Housing main material	TPU
Insulation resistance	≥ 100 MΩ	Nominal current	12 A
Protection degree	IP67	Pollution severity	3
Cable gland	M 12	Shield connection	No
Temperature range of housing	-30...+90 °C		

## Standards

Connector standard IEC 61076-2-111

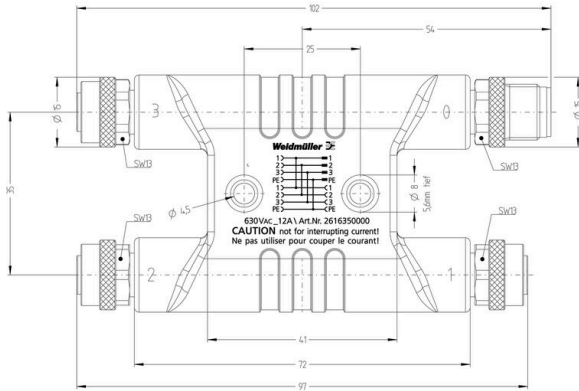
## General data

Number of poles	4	Coding	S-coded
Contact surface	Gold-plated	Housing main material	TPU
Insulation resistance	≥ 100 MΩ	Nominal current	12 A
Protection degree	IP67	Pollution severity	3
Cable gland	M 12	Rated voltage	630 V AC
Connection 1	M12/M12	Connection 2	Screw
Shield connection	No	Temperature range of housing	-30...+90 °C
Conductor O.D.	-		

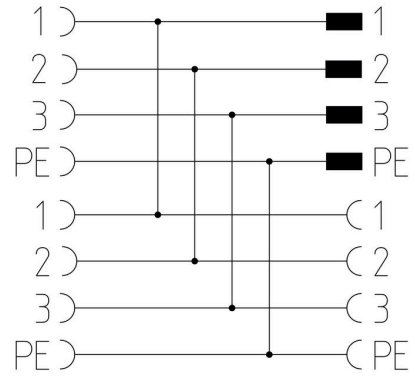
## Classifications

ETIM 8.0	EC002925	ETIM 9.0	EC002925
ETIM 10.0	EC002925	ECLASS 14.0	27-44-01-06
ECLASS 15.0	27-44-01-06		

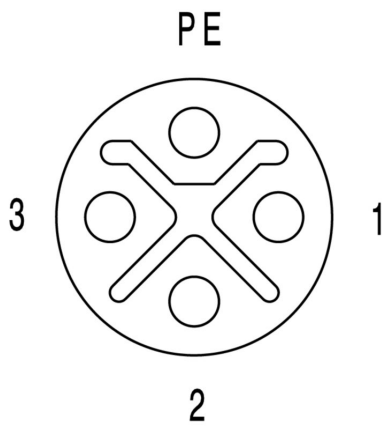
**Drawing**



**Connection diagram**



**Pole scheme**



**Pole scheme**

