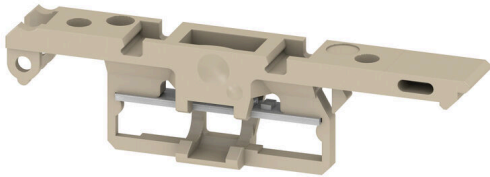


**F/HOLDER ASK1/EN/SMT 24VDC BFI 800K**

**Weidmüller Interface GmbH & Co. KG**  
Klingenbergstraße 26  
D-32758 Detmold  
Germany

[www.weidmueller.com](http://www.weidmueller.com)



The fuse holder SIHA quickly turns a disconnect terminal into a fuse terminal: simply remove the disconnect lever and attach the fuse unit.

**General ordering data**

Version	Disconnecting lever (terminal)
Order No.	<a href="#">2616220000</a>
Type	F/HOLDER ASK1/EN/SMT 24VDC BFI 800K
GTIN (EAN)	4050118628234
Qty.	50 items

**F/HOLDER ASK1/EN/SMT 24VDC BFI 800K**

**Weidmüller Interface GmbH & Co. KG**  
Klingenbergstraße 26  
D-32758 Detmold  
Germany

[www.weidmueller.com](http://www.weidmueller.com)

**Technical data****Approvals**

ROHS	Conform
------	---------

**Dimensions and weights**

Net weight	1.76 g
------------	--------

**Temperatures**

Ambient temperature	-5 °C...40 °C
---------------------	---------------

**Environmental Product Compliance**

RoHS Compliance Status	Compliant with exemption
------------------------	--------------------------

RoHS Exemption (if applicable/known)	7cl
--------------------------------------	-----

REACH SVHC	No SVHC above 0.1 wt%
------------	-----------------------

**Material data**

Colour	dark beige
--------	------------

**Classifications**

ETIM 8.0	EC002848	ETIM 9.0	EC002848
ETIM 10.0	EC002848	ECLASS 14.0	27-25-03-90
ECLASS 15.0	27-25-03-90		