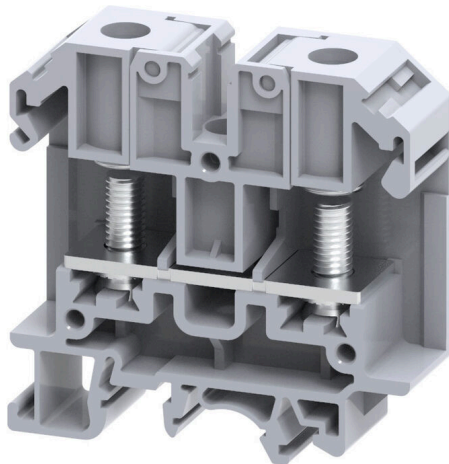


SRL 6**Weidmüller Interface GmbH & Co. KG**

Klingenbergstraße 26

D-32758 Detmold

Germany

www.weidmueller.com**Product image**

To feed through power, signal, and data is the classical requirement in electrical engineering and panel building. The insulating material, the connection system and the design of the terminal blocks are the differentiating features. A feed-through terminal block is suitable for joining and/or connecting one or more conductors. They could have one or more connection levels that are on the same potential or insulated against one another.

General ordering data

Version	Stud terminal, Threaded stud connection, grey, 35 mm², 125 A, 1000 V, Number of connections: 2, Number of levels: 1, TS 35, TS 32, V-2, Polyamide
Order No.	2614960000
Type	SRL 6
GTIN (EAN)	4050118654011
Qty.	50 items

SRL 6

Weidmüller Interface GmbH & Co. KG

Klingenbergstraße 26

D-32758 Detmold

Germany

www.weidmueller.com

Technical data

Approvals

Approvals



ROHS Conform

UL File Number Search [UL Website](#)

Certificate No. (cURus)

-

Dimensions and weights

Depth	63.1 mm	Depth (inches)	2.4842 inch
Height	63.9 mm	Height (inches)	2.5157 inch
Width	18 mm	Width (inches)	0.7087 inch
Net weight	56.1 g		

Temperatures

Storage temperature	-25 °C...55 °C	Ambient temperature	-5 °C...40 °C
Continuous operating temp., min.	-50 °C	Continuous operating temp., max.	120 °C

Environmental Product Compliance

RoHS Compliance Status	Compliant without exemption
REACH SVHC	No SVHC above 0.1 wt%

Material data

Basic material	Polyamide	Colour	grey
UL 94 flammability rating	V-2		

System specifications

End cover plate required	Yes	Number of potentials	1
Number of levels	1	Number of clamping points per level	2
Number of potentials per tier	1	Levels cross-connected internally	No
PE connection	No	Mounting rail	TS 35, TS 32
N-function	No	PE function	No
PEN function	No		

Additional technical data

Open sides	right	Snap-on	Yes
Explosion-tested version	No	Type of mounting	Snap mounting support rail

CSA rating data

Wire cross section min. (cCSAusX)	22 AWG	Certificate number (cCSAus)	70198655
Wire cross section max. (cCSAusX)	8 AWG		

Conductors for clamping (rated connection)

Cable lug to DIN 46234	1.5...35 mm ²	Cable lug to DIN 46235	1.5...35 mm ²
Wire connection cross section AWG, max.	AWG 2	Connection direction	on side

SRL 6

Weidmüller Interface GmbH & Co. KG

Klingenbergstraße 26

D-32758 Detmold

Germany

www.weidmueller.com

Technical data

Tightening torque, max.	3 Nm	Tightening torque, min.	3 Nm
Type of connection	Threaded stud connection	Number of connections	2
Clamping range, max.	35 mm ²	Clamping range, min.	1.5 mm ²
Clamping range, bolted connection , max.	35.00 mm ²	Clamping range, bolted connection , min.	1.5 mm ²
Wire connection cross section AWG, min.	AWG 22	Wire connection cross-section, finely stranded with wire-end ferrules DIN 46228/4, min.	1.5 mm ²
Wire connection cross-section, finely stranded with wire-end ferrules DIN 46228/1, min.	1.5 mm ²	Wire connection cross section, finely stranded, max.	35 mm ²
Wire connection cross section, finely stranded, min.	1.5 mm ²	Connection cross-section, stranded, max.	35 mm ²
Connection cross-section, stranded, min.	1.5 mm ²	Stud size for spade connection	M 6
Wire connection cross-section, solid core, max.	35 mm ²	Wire connection cross-section, solid core, min.	1.5 mm ²
Connection cross-section, finely stranded, min.	1.5 mm ²	2 x cable lugs DIN 46 235	1.5...35 mm ²
2 x cable lugs DIN 46 234	1.5...35 mm ²		

General

Wire connection cross section AWG, max.	AWG 2	Wire connection cross section AWG, min.	AWG 22
Standards	IEC 60947-7-1	Mounting rail	TS 35, TS 32

Rating data

Rated cross-section	35 mm ²	Rated voltage	1000 V
Rated DC voltage	1000 V	Nominal current	125 A
Current at maximum wires	125 A	Standards	IEC 60947-7-1
Volume resistance according to IEC 60947-7-x	0.26 mΩ	Rated impulse withstand voltage	8 kV
Power loss in accordance with IEC 60947-7-x	4.00 W	Surge voltage category	III
Pollution severity	3		

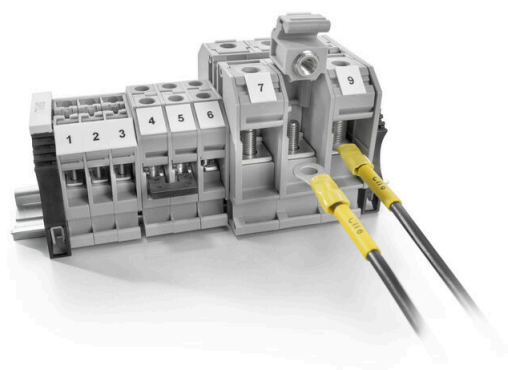
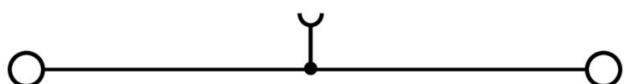
UL rating data

Conductor size Factory wiring max. (cURus)	2 AWG	Voltage size B (cURus)	600 V
Certificate No. (cURus)	.	Conductor size Field wiring min. (cURus)	22 AWG
Conductor size Factory wiring min. (cURus)	22 AWG	Current size B (cURus)	115 A
Voltage size C (cURus)	600 V	Current size C (cURus)	115 A
Conductor size Field wiring max. (cURus)	2 AWG		

Classifications

ETIM 8.0	EC000897	ETIM 9.0	EC000897
ETIM 10.0	EC000897	ECLASS 14.0	27-25-01-01
ECLASS 15.0	27-25-01-01		

Drawings



SRL 6

Weidmüller Interface GmbH & Co. KG

Klingenbergstraße 26

D-32758 Detmold

Germany

www.weidmueller.com

Accessories

End plates and partition plates



Partition plates and end plates are essential accessories for terminal blocks. Partition plates provide optical and electrical separation of different potentials and functional groups, increasing safety and ensuring a clear structure inside the control cabinet. End plates close the terminal block row on the sides, protect against contact with live parts, and ensure a clean, stable finish. Both components are precisely matched to the respective Weidmüller terminal block series, contributing to safe, compliant, and professional wiring.

General ordering data

Type	SEP SRL 6	Version	
Order No.	2615010000	End plate for terminals, grey, Height: 63.5 mm, Width: 2 mm, V-2,	
GTIN (EAN)	4050118653960	Polyamide, Snap-on: Yes	
Qty.	50 ST		

Cross-connections



The distribution or multiplication of a potential to adjoining terminal blocks is realized via a cross-connection. Additional wiring effort can be easily avoided. Even if the poles are broken out, contact reliability in the terminal blocks is still ensured. Our portfolio offers pluggable and screwable cross-connection systems for modular terminal blocks.

General ordering data

Type	SQV 6/2	Version	
Order No.	2615080000	Cross-connector (terminal), when screwed in, black, grey, 125 A,	
GTIN (EAN)	4050118653908	Number of poles: 2, Pitch in mm (P): 18.00, Insulated: No, Width: 26	
Qty.	100 ST	mm	
Type	SQV 6/3	Version	
Order No.	2615090000	Cross-connector (terminal), when screwed in, black, grey, 125 A,	
GTIN (EAN)	4050118653892	Number of poles: 3, Pitch in mm (P): 18.00, Insulated: No, Width:	
Qty.	50 ST	43.1 mm	
Type	SQV 6/4	Version	
Order No.	2615100000	Cross-connector (terminal), when screwed in, black, grey, 125 A,	
GTIN (EAN)	4050118653885	Number of poles: 4, Pitch in mm (P): 18.00, Insulated: No, Width:	
Qty.	50 ST	61.1 mm	

SRL 6

Weidmüller Interface GmbH & Co. KG

Klingenbergstraße 26

D-32758 Detmold

Germany

www.weidmueller.com

Accessories

Blank



WS markers are the perfect match for the W-series connectors. Thanks to their system compatibility, the WS tags can also be used with the I-series and the Z-series. The large marking surfaces do not only permit long character strings but also multi-line text. WS markers are ideal for labels with long, customised character strings. Thanks to the proven MultiCard format, printing with PrintJet CONNECT oder/or Plotter is possible.

- Can be fitted in strips or individually
- Markers in proven MultiCard format

For custom printing: Please send us a file of our labeling software M-Print PRO or M-Print PRO Online (without installation) for your labeling specifications.

General ordering data

Type	WS 10/15 MC NE WS	Version
Order No.	1854090000	WS, Terminal marker, 10 x 15 mm, Pitch in mm (P): 15.00
GTIN (EAN)	4032248390694	Weidmueller, Allen-Bradley, white
Qty.	240 ST	

Crimp cable lugs



Insulated cable connector in PVC or PC/PA

- Conventional designs
- Not soldered
- With conical entry funnel, except for joint connector

General ordering data

Type	KQI-M6/-1	Version
Order No.	1492230000	cable lug, terminal end, Insulated cable connector, 1 mm ² , 0.5 mm ² - 1 mm ²
GTIN (EAN)	4050118302400	
Qty.	100 ST	
Type	KQI-M6/-2,5	Version
Order No.	1492320000	cable lug, terminal end, Insulated cable connector, 2.5 mm ² , 1.5 mm ² - 2.5 mm ²
GTIN (EAN)	4050118302417	
Qty.	100 ST	
Type	KQI-M6/-6	Version
Order No.	1492390000	cable lug, terminal end, Insulated cable connector, 6 mm ² , 4 mm ² - 6 mm ²
GTIN (EAN)	4050118302509	
Qty.	100 ST	
Type	KQI-M6/-10	Version
Order No.	1492440000	cable lug, terminal end, Insulated cable connector, 10 mm ² , 10 mm ² - 10 mm ²
GTIN (EAN)	4050118302356	
Qty.	50 ST	

SRL 6**Weidmüller Interface GmbH & Co. KG**

Klingenbergstraße 26

D-32758 Detmold

Germany

www.weidmueller.com**Accessories**

Type	KQI-M6/-16	Version
Order No.	1492490000	cable lug, terminal end, Insulated cable connector, 16 mm ² , 16 mm ² -
GTIN (EAN)	4050118302455	16 mm ²
Qty.	50 ST	