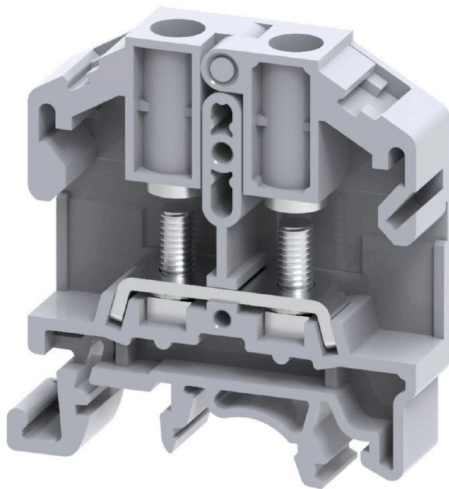


**SRL 4 STB****Weidmüller Interface GmbH & Co. KG**

Klingenbergstraße 26

D-32758 Detmold

Germany

[www.weidmueller.com](http://www.weidmueller.com)**Product image**

To feed through power, signal, and data is the classical requirement in electrical engineering and panel building. The insulating material, the connection system and the design of the terminal blocks are the differentiating features. A feed-through terminal block is suitable for joining and/or connecting one or more conductors. They could have one or more connection levels that are on the same potential or insulated against one another.

**General ordering data**

Version	Stud terminal, Threaded stud connection, grey, 6 mm <sup>2</sup> , 41 A, 1000 V, Number of connections: 2, Number of levels: 1, TS 35, TS 32, V-2, Polyamide
Order No.	<a href="#">2614950000</a>
Type	SRL 4 STB
GTIN (EAN)	4050118654028
Qty.	50 items

## SRL 4 STB

**Weidmüller Interface GmbH & Co. KG**  
 Klingenbergstraße 26  
 D-32758 Detmold  
 Germany

www.weidmueller.com

## Technical data

## Approvals

Approvals



ROHS Conform

## Dimensions and weights

Depth	51.5 mm	Depth (inches)	2.0276 inch
Depth including DIN rail	52.2 mm	Height	48.5 mm
Height (inches)	1.9094 inch	Width	11 mm
Width (inches)	0.4331 inch	Net weight	11 g

## Temperatures

Storage temperature	-25 °C...55 °C	Ambient temperature	-5 °C...40 °C
Continuous operating temp., min.	-50 °C	Continuous operating temp., max.	120 °C

## Environmental Product Compliance

RoHS Compliance Status	Compliant without exemption
REACH SVHC	No SVHC above 0.1 wt%

## Material data

Basic material	Polyamide	Colour	grey
UL 94 flammability rating	V-2		

## System specifications

End cover plate required	Yes	Number of potentials	1
Number of levels	1	Number of clamping points per level	2
Number of potentials per tier	1	Levels cross-connected internally	No
PE connection	No	Mounting rail	TS 35, TS 32
N-function	No	PE function	No
PEN function	No		

## Additional technical data

Open sides	right	Snap-on	Yes
Type of fixing	Snap-on	Explosion-tested version	No
Type of mounting	Snap-on		

## Conductors for clamping (rated connection)

Cable lug to DIN 46234	1.5...6 mm <sup>2</sup>	Cable lug to DIN 46235	1.5...6 mm <sup>2</sup>
Wire connection cross section AWG, max.	AWG 8	Connection direction	on side
Tightening torque, max.	0.5 Nm	Tightening torque, min.	0.5 Nm
Type of connection	Threaded stud connection	Number of connections	2
Clamping range, max.	6 mm <sup>2</sup>	Clamping range, min.	1.5 mm <sup>2</sup>
Clamping range, bolted connection , max.	6.00 mm <sup>2</sup>	Clamping range, bolted connection , min.	1.5 mm <sup>2</sup>

### Technical data

Wire connection cross section AWG, min.	AWG 22	Wire connection cross-section, finely stranded with wire-end ferrules DIN 46228/4, min.	1.5 mm <sup>2</sup>
Wire connection cross-section, finely stranded with wire-end ferrules DIN 46228/1, min.	1.5 mm <sup>2</sup>	Wire connection cross section, finely stranded, max.	6 mm <sup>2</sup>
Wire connection cross section, finely stranded, min.	1.5 mm <sup>2</sup>	Connection cross-section, stranded, max.	6 mm <sup>2</sup>
Connection cross-section, stranded, min.	1.5 mm <sup>2</sup>	Stud size for spade connection	M 4
Wire connection cross-section, solid core, max.	6 mm <sup>2</sup>	Wire connection cross-section, solid core, min.	1.5 mm <sup>2</sup>
Connection cross-section, finely stranded, min.	1.5 mm <sup>2</sup>	2 x cable lugs DIN 46 235	1.5...6 mm <sup>2</sup>
2 x cable lugs DIN 46 234	1.5...6 mm <sup>2</sup>		

### General

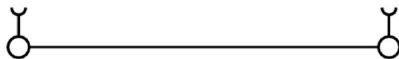
Wire connection cross section AWG, max.	AWG 8	Wire connection cross section AWG, min.	AWG 22
Standards	IEC 60947-7-1	Mounting rail	TS 35, TS 32

### Rating data

Rated cross-section	6 mm <sup>2</sup>	Rated voltage	1000 V
Rated DC voltage	1000 V	Nominal current	41 A
Current at maximum wires	41 A	Standards	IEC 60947-7-1
Volume resistance according to IEC 60947-7-x	0.78 mΩ	Rated impulse withstand voltage	8 kV
Power loss in accordance with IEC 60947-7-x	1.31 W	Surge voltage category	III
Pollution severity	3		

### Classifications

ETIM 6.0	EC000897	ETIM 7.0	EC000897
ETIM 8.0	EC000897	ETIM 9.0	EC000897
ETIM 10.0	EC000897	ECLASS 9.0	27-14-11-20
ECLASS 9.1	27-14-11-20	ECLASS 10.0	27-14-11-20
ECLASS 11.0	27-14-11-20	ECLASS 12.0	27-14-11-20
ECLASS 13.0	27-25-01-01	ECLASS 14.0	27-25-01-01
ECLASS 15.0	27-25-01-01		



## SRL 4 STB

Weidmüller Interface GmbH &amp; Co. KG

Klingenbergstraße 26

D-32758 Detmold

Germany

www.weidmueller.com

## Accessories

## End plates and partition plates



End plates are fitted to the open side of the last modular terminal before the end bracket. The use of an end plate ensures the function of the modular terminal and the specified rated voltage. It guarantees protection against contact with live parts and makes the final terminal finger-proof.

## General ordering data

Type	SEP SRL 4	Version
Order No.	<a href="#">2615000000</a>	End plate for terminals, grey, Height: 46 mm, Width: 1.5 mm, V-2,
GTIN (EAN)	4050118653977	Polyamide, Snap-on: Yes
Qty.	50 ST	

## Cross-connections



The distribution or multiplication of a potential to adjoining terminal blocks is realized via a cross-connection. Additional wiring effort can be easily avoided. Even if the poles are broken out, contact reliability in the terminal blocks is still ensured. Our portfolio offers pluggable and screwable cross-connection systems for modular terminal blocks.

## General ordering data

Type	SRQB 4/2	Version
Order No.	<a href="#">2615220000</a>	Cross-connector (terminal), when screwed in, black, 41 A, Number of
GTIN (EAN)	4050118653663	poles: 2, Pitch in mm (P): 11.00, Insulated: Yes, Width: 17 mm
Qty.	100 ST	
Type	SRQB 4/3	Version
Order No.	<a href="#">2615230000</a>	Cross-connector (terminal), when screwed in, black, 41 A, Number of
GTIN (EAN)	4050118653656	poles: 3, Pitch in mm (P): 11.00, Insulated: Yes, Width: 28 mm
Qty.	50 ST	
Type	SRQB 4/4	Version
Order No.	<a href="#">2615240000</a>	Cross-connector (terminal), when screwed in, black, 41 A, Number of
GTIN (EAN)	4050118653649	poles: 4, Pitch in mm (P): 11.00, Insulated: Yes, Width: 39 mm
Qty.	50 ST	
Type	SQB 4/2	Version
Order No.	<a href="#">2615140000</a>	Cross-connector (terminal), when screwed in, black, 41 A, Number of
GTIN (EAN)	4050118653847	poles: 2, Pitch in mm (P): 11.00, Insulated: Yes, Width: 17 mm
Qty.	100 ST	
Type	SQB 4/3	Version
Order No.	<a href="#">2615150000</a>	Cross-connector (terminal), when screwed in, black, 41 A, Number of
GTIN (EAN)	4050118653830	poles: 3, Pitch in mm (P): 11.00, Insulated: Yes, Width: 28 mm
Qty.	50 ST	

## SRL 4 STB

Weidmüller Interface GmbH &amp; Co. KG

Klingenbergstraße 26

D-32758 Detmold

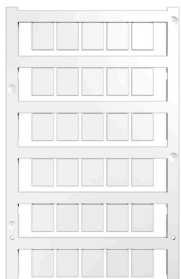
Germany

www.weidmueller.com

## Accessories

Type	SQB 4/4	Version
Order No.	<a href="#">2615160000</a>	Cross-connector (terminal), when screwed in, black, 41 A, Number of
GTIN (EAN)	4050118653823	poles: 4, Pitch in mm (P): 11.00, Insulated: Yes, Width: 39 mm
Qty.	50 ST	
Type	SQS 4/2	Version
Order No.	<a href="#">2615250000</a>	Cross-connector (terminal), when screwed in, black, 41 A, Number of
GTIN (EAN)	4050118653632	poles: 2, Pitch in mm (P): 11.00, Insulated: Yes, Width: 18.4 mm
Qty.	20 ST	
Type	SQS 4/4	Version
Order No.	<a href="#">2615260000</a>	Cross-connector (terminal), when screwed in, black, 41 A, Number of
GTIN (EAN)	4050118653625	poles: 4, Pitch in mm (P): 11.00, Insulated: Yes, Width: 40.4 mm
Qty.	10 ST	

## Blank



WS markers are the perfect match for the W-series connectors. Thanks to their system compatibility, the WS tags can also be used with the I-series and the Z-series. The large marking surfaces do not only permit long character strings but also multi-line text. WS markers are ideal for labels with long, customised character strings. Thanks to the proven MultiCard format, printing with PrintJet CONNECT oder/or Plotter is possible.

- Can be fitted in strips or individually
- Markers in proven MultiCard format

For custom printing: Please send us a file of our labeling software M-Print PRO or M-Print PRO Online (without installation) for your labeling specifications.

## General ordering data

Type	WS 12/9.5-11 MC NE WS	Version
Order No.	<a href="#">2484220000</a>	, Polyamide 66, Colour: white
GTIN (EAN)	4050118494808	
Qty.	300 ST	

## Crimp cable lugs



Insulated cable connector in PVC or PC/PA

- Conventional designs
- Not soldered
- With conical entry funnel, except for joint connector

## General ordering data

Type	KQI-M4/-0.5	Version
Order No.	<a href="#">1492110000</a>	cable lug, terminal end, Insulated cable connector, 0.5 mm <sup>2</sup> , 0.1 mm <sup>2</sup> -
GTIN (EAN)	4050118302103	0.5 mm <sup>2</sup>
Qty.	100 ST	

**SRL 4 STB****Weidmüller Interface GmbH & Co. KG**

Klingenbergstraße 26

D-32758 Detmold

Germany

[www.weidmueller.com](http://www.weidmueller.com)**Accessories**

Type	KQI-M4/-1	Version
Order No.	<a href="#">1492200000</a>	cable lug, terminal end, Insulated cable connector, 1 mm <sup>2</sup> , 0.5 mm <sup>2</sup> - 1
GTIN (EAN)	4050118302301	mm <sup>2</sup>
Qty.	100 ST	
Type	KQI-M4/-2,5	Version
Order No.	<a href="#">1492290000</a>	cable lug, terminal end, Insulated cable connector, 2.5 mm <sup>2</sup> , 1.5 mm <sup>2</sup> -
GTIN (EAN)	4050118302172	2.5 mm <sup>2</sup>
Qty.	100 ST	
Type	KQI-M4/-6	Version
Order No.	<a href="#">1492370000</a>	cable lug, terminal end, Insulated cable connector, 6 mm <sup>2</sup> , 4 mm <sup>2</sup> - 6
GTIN (EAN)	4050118302264	mm <sup>2</sup>
Qty.	100 ST	