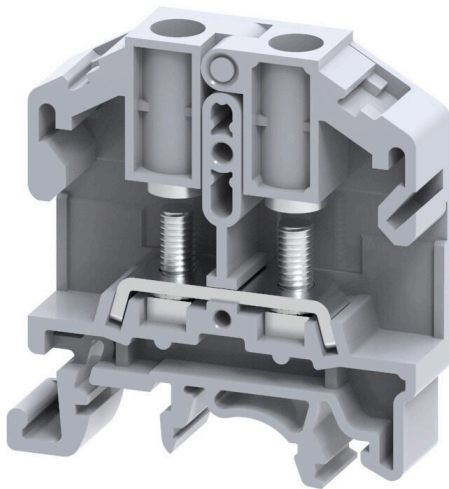


SRL 4**Weidmüller Interface GmbH & Co. KG**

Klingenbergstraße 26

D-32758 Detmold

Germany

www.weidmueller.com**Product image**

To feed through power, signal, and data is the classical requirement in electrical engineering and panel building. The insulating material, the connection system and the design of the terminal blocks are the differentiating features. A feed-through terminal block is suitable for joining and/or connecting one or more conductors. They could have one or more connection levels that are on the same potential or insulated against one another.

General ordering data

Version	Stud terminal, Threaded stud connection, grey, 6 mm ² , 41 A, 1000 V, Number of connections: 2, Number of levels: 1, TS 35, TS 32, V-2, Polyamide
Order No.	2614940000
Type	SRL 4
GTIN (EAN)	4050118654035
Qty.	50 items

SRL 4

Weidmüller Interface GmbH & Co. KG

Klingenbergstraße 26

D-32758 Detmold

Germany

www.weidmueller.com

Technical data

Approvals

Approvals



ROHS Conform

UL File Number Search [UL Website](#)

Certificate No. (cURus)

Dimensions and weights

Depth	51.5 mm	Depth (inches)	2.0276 inch
Depth including DIN rail	52.2 mm	Height	48.5 mm
Height (inches)	1.9094 inch	Width	11 mm
Width (inches)	0.4331 inch	Net weight	11 g

Temperatures

Storage temperature	-25 °C...55 °C	Ambient temperature	-5 °C...40 °C
Continuous operating temp., min.	-50 °C	Continuous operating temp., max.	120 °C

Environmental Product Compliance

RoHS Compliance Status	Compliant without exemption
REACH SVHC	No SVHC above 0.1 wt%

Material data

Basic material	Polyamide	Colour	grey
UL 94 flammability rating	V-2		

System specifications

End cover plate required	Yes	Number of potentials	1
Number of levels	1	Number of clamping points per level	2
Number of potentials per tier	1	Levels cross-connected internally	No
PE connection	No	Mounting rail	TS 35, TS 32
N-function	No	PE function	No
PEN function	No		

Additional technical data

Open sides	right	Snap-on	Yes
Type of fixing	Snap-on	Explosion-tested version	No
Type of mounting	Snap-on		

CSA rating data

Wire cross section min. (cCSAusX)	22 AWG	Certificate number (cCSAus)	70198654
Wire cross section max. (cCSAusX)	8 AWG		

Conductors for clamping (rated connection)

Cable lug to DIN 46234	1.5...6 mm ²	Cable lug to DIN 46235	1.5...6 mm ²
Wire connection cross section AWG, max.	AWG 8	Connection direction	on side

SRL 4

Weidmüller Interface GmbH & Co. KG

Klingenbergstraße 26

D-32758 Detmold

Germany

www.weidmueller.com

Technical data

Tightening torque, max.	0.5 Nm	Tightening torque, min.	0.5 Nm
Type of connection	Threaded stud connection	Number of connections	2
Clamping range, max.	6 mm ²	Clamping range, min.	1.5 mm ²
Clamping range, bolted connection , max.	6.00 mm ²	Clamping range, bolted connection , min.	1.5 mm ²
Wire connection cross section AWG, min.	AWG 22	Wire connection cross-section, finely stranded with wire-end ferrules DIN 46228/4, min.	1.5 mm ²
Wire connection cross-section, finely stranded with wire-end ferrules DIN 46228/1, min.	1.5 mm ²	Wire connection cross section, finely stranded, max.	6 mm ²
Wire connection cross section, finely stranded, min.	1.5 mm ²	Connection cross-section, stranded, max.	6 mm ²
Connection cross-section, stranded, min.	1.5 mm ²	Stud size for spade connection	M 4
Wire connection cross-section, solid core, max.	6 mm ²	Wire connection cross-section, solid core, min.	1.5 mm ²
Connection cross-section, finely stranded, min.	1.5 mm ²	2 x cable lugs DIN 46 235	1.5...6 mm ²
2 x cable lugs DIN 46 234	1.5...6 mm ²		

General

Wire connection cross section AWG, max.	AWG 8	Wire connection cross section AWG, min.	AWG 22
Standards	IEC 60947-7-1	Mounting rail	TS 35, TS 32

Rating data

Rated cross-section	6 mm ²	Rated voltage	1000 V
Rated DC voltage	1000 V	Nominal current	41 A
Current at maximum wires	41 A	Standards	IEC 60947-7-1
Volume resistance according to IEC 60947-7-x	0.78 mΩ	Rated impulse withstand voltage	8 kV
Power loss in accordance with IEC 60947-7-x	1.31 W	Surge voltage category	III
Pollution severity	3		

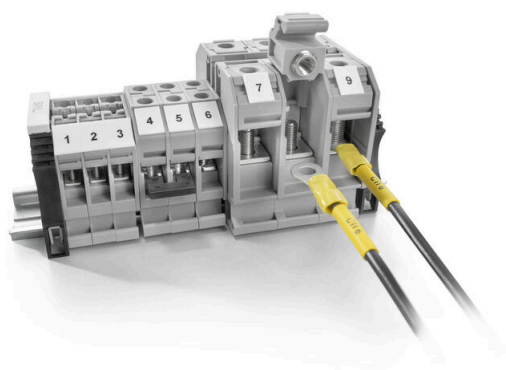
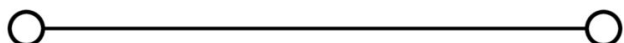
UL rating data

Conductor size Factory wiring max. (cURus)	8 AWG	Voltage size B (cURus)	600 V
Certificate No. (cURus)	.	Conductor size Field wiring min. (cURus)	22 AWG
Conductor size Factory wiring min. (cURus)	22 AWG	Current size B (cURus)	50 A
Voltage size C (cURus)	600 V	Current size C (cURus)	50 A
Conductor size Field wiring max. (cURus)	8 AWG		

Classifications

ETIM 8.0	EC000897	ETIM 9.0	EC000897
ETIM 10.0	EC000897	ECLASS 14.0	27-25-01-01
ECLASS 15.0	27-25-01-01		

Drawings



SRL 4

Weidmüller Interface GmbH & Co. KG

Klingenbergstraße 26

D-32758 Detmold

Germany

www.weidmueller.com

Accessories

End plates and partition plates



Partition plates and end plates are essential accessories for terminal blocks. Partition plates provide optical and electrical separation of different potentials and functional groups, increasing safety and ensuring a clear structure inside the control cabinet. End plates close the terminal block row on the sides, protect against contact with live parts, and ensure a clean, stable finish. Both components are precisely matched to the respective Weidmüller terminal block series, contributing to safe, compliant, and professional wiring.

General ordering data

Type	SEP SRL 4	Version	
Order No.	2615000000	End plate for terminals, grey, Height: 46 mm, Width: 1.5 mm, V-2,	
GTIN (EAN)	4050118653977	Polyamide, Snap-on: Yes	
Qty.	50 ST		

Cross-connections



The distribution or multiplication of a potential to adjoining terminal blocks is realized via a cross-connection. Additional wiring effort can be easily avoided. Even if the poles are broken out, contact reliability in the terminal blocks is still ensured. Our portfolio offers pluggable and screwable cross-connection systems for modular terminal blocks.

General ordering data

Type	SRQB 4/2	Version	
Order No.	2615220000	Cross-connector (terminal), when screwed in, black, 41 A, Number of	
GTIN (EAN)	4050118653663	poles: 2, Pitch in mm (P): 11.00, Insulated: Yes, Width: 17 mm	
Qty.	100 ST		
Type	SRQB 4/3	Version	
Order No.	2615230000	Cross-connector (terminal), when screwed in, black, 41 A, Number of	
GTIN (EAN)	4050118653656	poles: 3, Pitch in mm (P): 11.00, Insulated: Yes, Width: 28 mm	
Qty.	50 ST		
Type	SRQB 4/4	Version	
Order No.	2615240000	Cross-connector (terminal), when screwed in, black, 41 A, Number of	
GTIN (EAN)	4050118653649	poles: 4, Pitch in mm (P): 11.00, Insulated: Yes, Width: 39 mm	
Qty.	50 ST		
Type	SQB 4/2	Version	
Order No.	2615140000	Cross-connector (terminal), when screwed in, black, 41 A, Number of	
GTIN (EAN)	4050118653847	poles: 2, Pitch in mm (P): 11.00, Insulated: Yes, Width: 17 mm	
Qty.	100 ST		
Type	SQB 4/3	Version	
Order No.	2615150000	Cross-connector (terminal), when screwed in, black, 41 A, Number of	
GTIN (EAN)	4050118653830	poles: 3, Pitch in mm (P): 11.00, Insulated: Yes, Width: 28 mm	
Qty.	50 ST		

SRL 4

Weidmüller Interface GmbH & Co. KG

Klingenbergstraße 26

D-32758 Detmold

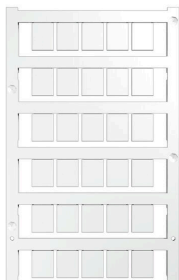
Germany

www.weidmueller.com

Accessories

Type	SQB 4/4	Version
Order No.	2615160000	Cross-connector (terminal), when screwed in, black, 41 A, Number of
GTIN (EAN)	4050118653823	poles: 4, Pitch in mm (P): 11.00, Insulated: Yes, Width: 39 mm
Qty.	50 ST	

Blank



WS markers are the perfect match for the W-series connectors. Thanks to their system compatibility, the WS tags can also be used with the I-series and the Z-series. The large marking surfaces do not only permit long character strings but also multi-line text. WS markers are ideal for labels with long, customised character strings. Thanks to the proven MultiCard format, printing with PrintJet CONNECT oder/or Plotter is possible.

- Can be fitted in strips or individually
- Markers in proven MultiCard format

For custom printing: Please send us a file of our labeling software M-Print PRO or M-Print PRO Online (without installation) for your labeling specifications.

General ordering data

Type	WS 12/9.5-11 MC NE WS	Version
Order No.	2484220000	, Polyamide 66, Colour: white
GTIN (EAN)	4050118494808	
Qty.	300 ST	

Crimp cable lugs



Insulated cable connector in PVC or PC/PA

- Conventional designs
- Not soldered
- With conical entry funnel, except for joint connector

General ordering data

Type	KQI-M4/-0,5	Version
Order No.	1492110000	cable lug, terminal end, Insulated cable connector, 0.5 mm ² , 0.1 mm ² -
GTIN (EAN)	4050118302103	0.5 mm ²
Qty.	100 ST	
Type	KQI-M4/-1	Version
Order No.	1492200000	cable lug, terminal end, Insulated cable connector, 1 mm ² , 0.5 mm ² - 1
GTIN (EAN)	4050118302301	mm ²
Qty.	100 ST	
Type	KQI-M4/-2,5	Version
Order No.	1492290000	cable lug, terminal end, Insulated cable connector, 2.5 mm ² , 1.5 mm ² -
GTIN (EAN)	4050118302172	2.5 mm ²
Qty.	100 ST	

SRL 4

Weidmüller Interface GmbH & Co. KG
Klingenbergstraße 26
D-32758 Detmold
Germany

www.weidmueller.com

Accessories

Type	KQI-M4/-6	Version	
Order No.	1492370000	cable lug, terminal end, Insulated cable connector, 6 mm ² , 4 mm ² - 6	
GTIN (EAN)	4050118302264	mm ²	
Qty.	100 ST		