

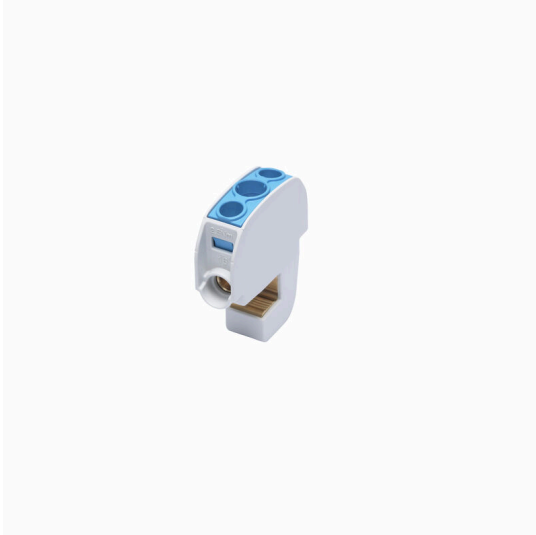
WBBD 16 BL**Weidmüller Interface GmbH & Co. KG**

Klingenbergstraße 26

D-32758 Detmold

Germany

www.weidmueller.com

Product image

Weidmueller offers tapping terminals for various types of bus bar systems. Depending on the application, a distinction can be made here between insulated and non-insulated tap-off terminals.

General ordering data

Version	Terminal (busbar connection)
Order No.	2603850000
Type	WBBD 16 BL
GTIN (EAN)	4050118651584
Qty.	12 items

WBBD 16 BL

Weidmüller Interface GmbH & Co. KG
 Klingenbergstraße 26
 D-32758 Detmold
 Germany

www.weidmueller.com

Technical data

Approvals

Approvals



ROHS Conform

Dimensions and weights

Depth	55.2 mm	Depth (inches)	2.1732 inch
Height	47.8 mm	Height (inches)	1.8819 inch
Width	15.2 mm	Width (inches)	0.5984 inch
Net weight	76.5 g		

Temperatures

Storage temperature	-25 °C...55 °C	Ambient temperature	-5 °C...40 °C
Continuous operating temp., min.	-50 °C	Continuous operating temp., max.	120 °C

Environmental Product Compliance

RoHS Compliance Status	Compliant with exemption
RoHS Exemption (if applicable/known)	6c
REACH SVHC	Lead 7439-92-1
SCIP	8eb3a2db-1bf7-4e36-90c8-13894424d475

Material data

Basic material	Wemid	Insulating material	Wemid
Colour	blue	UL 94 flammability rating	V-0

System specifications

Version	Screw connection	End cover plate required	No
Number of potentials	1	Number of levels	1
Number of clamping points per level	2	Number of potentials per tier	1
Mounting rail	Busbar		

Additional technical data

Installation advice	Terminal rail / mounting plate	Type of mounting	Snap-on
---------------------	--------------------------------	------------------	---------

Conductors for clamping (rated connection)

Connection direction	on side	Tightening torque, max.	2.5 Nm
Tightening torque, min.	2.5 Nm	Stripping length	12 mm
Type of connection	Screw connection	Number of connections	2
Clamping range, max.	16 mm ²	Clamping range, min.	1.5 mm ²
Clamping screw	M 6	Blade size	Gr. PZ2
Wire connection cross-section, finely stranded with wire-end ferrules DIN 46228/4, max.	10 mm ²	Wire connection cross-section, finely stranded with wire-end ferrules DIN 46228/4, min.	1.5 mm ²

WBBD 16 BL

Weidmüller Interface GmbH & Co. KG
 Klingenbergstraße 26
 D-32758 Detmold
 Germany

www.weidmueller.com

Technical data

Wire connection cross-section, finely stranded with wire-end ferrules DIN 46228/1, max.	10 mm ²	Wire connection cross-section, finely stranded with wire-end ferrules DIN 46228/1, min.	1.5 mm ²
Wire connection cross section, finely stranded, max.	16 mm ²	Wire connection cross section, finely stranded, min.	1.5 mm ²
Connection cross-section, stranded, max.	16 mm ²	Connection cross-section, stranded, min.	1.5 mm ²
Wire connection cross-section, solid core, max.	16 mm ²	Wire connection cross-section, solid core, min.	1.5 mm ²

General

Installation advice	Terminal rail / mounting plate	Standards	IEC 60947-7-1
Mounting rail	Busbar		

Rating data

Rated cross-section	16 mm ²	Rated voltage	690 V
Rated DC voltage	690 V	Nominal current	114 A
Standards	IEC 60947-7-1	Volume resistance according to IEC 60947-7-x	0.42 mΩ
Power loss in accordance with IEC 60947-7-x	2.43 W	Surge voltage category	III
Pollution severity	3		

Classifications

ETIM 8.0	EC000001	ETIM 9.0	EC000001
ETIM 10.0	EC000001	ECLASS 14.0	27-25-01-16
ECLASS 15.0	27-25-01-16		