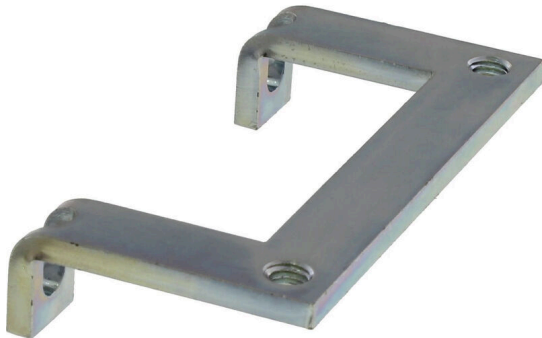


CABTITE CR 4/1 EMV

Weidmüller Interface GmbH & Co. KG
Klingenbergstraße 26
D-32758 Detmold
Germany

www.weidmueller.com



In combination with a large number of different shield connection clamps (KLBÜ), the shield connection rails enable practical, uncomplicated and fast shielding of cables.

General ordering data

Version	Shield connection rail, Cabtite (cable entry system), Steel, galvanized, silver, Height: 35.23 mm, Width: 68 mm, Depth: 16 mm
Order No.	2583950000
Type	CABTITE CR 4/1 EMV
GTIN (EAN)	4050118647037
Qty.	10 items

CABTITE CR 4/1 EMV

Weidmüller Interface GmbH & Co. KG
 Klingenbergstraße 26
 D-32758 Detmold
 Germany

www.weidmueller.com

Technical data

Approvals

ROHS Conform

Dimensions and weights

Depth	16 mm	Depth (inches)	0.6299 inch
Height	35.23 mm	Height (inches)	1.387 inch
Width	68 mm	Width (inches)	2.6772 inch
Diameter	5.3 mm	Mounting dimension - height	5.91 mm
Mounting dimension - width	5.3 mm	Net weight	26.14 g

Temperatures

Operating temperature

Environmental Product Compliance

RoHS Compliance Status Compliant without exemption
 REACH SVHC No SVHC above 0.1 wt%

General information

Silicone	No	Halogen	No
Basic material	Steel, galvanized		

Classifications

ETIM 8.0	EC002624	ETIM 9.0	EC002624
ETIM 10.0	EC002624	ECLASS 14.0	27-18-28-15
ECLASS 15.0	27-18-28-15		