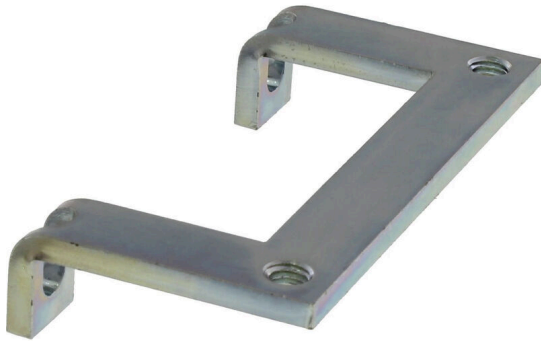


**CABTITE CR 4/1 EMV**

**Weidmüller Interface GmbH & Co. KG**  
Klingenbergstraße 26  
D-32758 Detmold  
Germany

www.weidmueller.com



In combination with a large number of different shield connection clamps (KLBÜ), the shield connection rails enable practical, uncomplicated and fast shielding of cables.

**General ordering data**

Version	Shield connection rail, Cabtite (cable entry system), Steel, galvanized, silver, Height: 35.23 mm, Width: 68 mm, Depth: 16 mm
Order No.	<a href="#">2583950000</a>
Type	CABTITE CR 4/1 EMV
GTIN (EAN)	4050118647037
Qty.	10 items

**CABTITE CR 4/1 EMV**

**Weidmüller Interface GmbH & Co. KG**  
 Klingenbergstraße 26  
 D-32758 Detmold  
 Germany

www.weidmueller.com

**Technical data**

**Approvals**

ROHS Conform

**Dimensions and weights**

Depth	16 mm	Depth (inches)	0.6299 inch
Height	35.23 mm	Height (inches)	1.387 inch
Width	68 mm	Width (inches)	2.6772 inch
Diameter	5.3 mm	Mounting dimension - height	5.91 mm
Mounting dimension - width	5.3 mm	Net weight	26.14 g

**Temperatures**

Operating temperature

**Environmental Product Compliance**

RoHS Compliance Status Compliant without exemption  
 REACH SVHC No SVHC above 0.1 wt%

**General information**

Silicone	No	Halogen	No
Basic material	Steel, galvanized		

**Classifications**

ETIM 8.0	EC002624	ETIM 9.0	EC002624
ETIM 10.0	EC002624	ECLASS 14.0	27-18-28-15
ECLASS 15.0	27-18-28-15		