

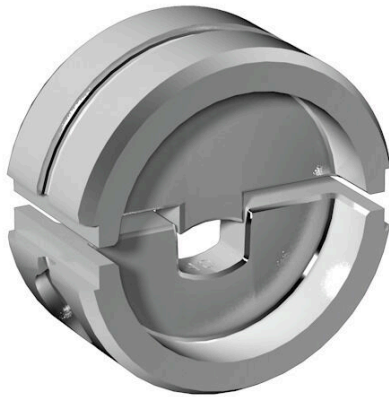
**ES EPG 60 ISO 16****Weidmüller Interface GmbH & Co. KG**

Klingenbergstraße 26

D-32758 Detmold

Germany

www.weidmueller.com



Crimping tools for cable lugs, connectors and wire-end ferrules with interchangeable inserts

- extremely fast processing thanks to hydraulic support
- large processing range up to 300 mm<sup>2</sup>
- 270° revolving quick-action crimping head
- automatic pressure limitation and monitoring via pressure sensor
- electronic control and monitoring of the crimping process
- Saving of all crimping cycles and error messages to internal memory
- Reading of all cycles and error messages via USB
- Li-ion rechargeable battery with charge status indicator: 18 V, 2 Ah

**General ordering data**

Version	16mm <sup>2</sup> , Oval crimping
Order No.	<a href="#">2577950000</a>
Type	ES EPG 60 ISO 16
GTIN (EAN)	4050118590630
Qty.	1 items

**Technical data**

**Dimensions and weights**

Depth	22 mm	Depth (inches)	0.8661 inch
Height	42 mm	Height (inches)	1.6535 inch
Width	42 mm	Width (inches)	1.6535 inch
Net weight	25 g		

**Environmental Product Compliance**

RoHS Compliance Status	Compliant without exemption
REACH SVHC	No SVHC above 0.1 wt%

**Crimp inserts**

Crimping width	7 mm	Crimp cross-section copper	16
Crimping width in mm	7		

**Description of contact**

Type of contact	Insulated connector	Conductor cross-section, max. AWG	6
Conductor cross-section, min. AWG	6	Crimping range, max.	16 mm <sup>2</sup>

**tool data crimping**

Crimping type/profile	Oval crimping
Cable lug cross section	nominal 16 mm <sup>2</sup>

**Classifications**

ETIM 8.0	EC001282	ETIM 9.0	EC001282
ETIM 10.0	EC001282	ECLASS 14.0	21-04-90-90
ECLASS 15.0	21-04-90-90		

## Accessories

### Crimp cable lugs



Insulated cable connector in PVC or PC/PA

- Conventional designs
- Not soldered
- With conical entry funnel, except for joint connector

#### General ordering data

Type	KQI-M10/-16	Version
Order No.	<a href="#">1492510000</a>	cable lug, terminal end, Insulated cable connector, 16 mm <sup>2</sup> , 16 mm <sup>2</sup> -
GTIN (EAN)	4050118302288	16 mm <sup>2</sup>
Qty.	50 ST	
Type	KQI-M5/-16	Version
Order No.	<a href="#">1492480000</a>	cable lug, terminal end, Insulated cable connector, 16 mm <sup>2</sup> , 16 mm <sup>2</sup> -
GTIN (EAN)	4050118302196	16 mm <sup>2</sup>
Qty.	50 ST	
Type	KQI-M6/-16	Version
Order No.	<a href="#">1492490000</a>	cable lug, terminal end, Insulated cable connector, 16 mm <sup>2</sup> , 16 mm <sup>2</sup> -
GTIN (EAN)	4050118302455	16 mm <sup>2</sup>
Qty.	50 ST	
Type	KQI-M8/-16	Version
Order No.	<a href="#">1492500000</a>	cable lug, terminal end, Insulated cable connector, 16 mm <sup>2</sup> , 16 mm <sup>2</sup> -
GTIN (EAN)	4050118302516	16 mm <sup>2</sup>
Qty.	50 ST	

### Forked cable lugs



Insulated forked-cable connector made from PVC or PC/PA

- Conventional designs
- Not soldered
- With conical entry funnel

#### General ordering data

Type	KQIG-M6/-16	Version
Order No.	<a href="#">1491350000</a>	cable lug, terminal end, Insulated cable connector, 16 mm <sup>2</sup> , 16 mm <sup>2</sup> -
GTIN (EAN)	4050118300987	16 mm <sup>2</sup>
Qty.	50 ST	
Type	KQIG-M8/-16	Version
Order No.	<a href="#">1491360000</a>	cable lug, terminal end, Insulated cable connector, 16 mm <sup>2</sup> , 16 mm <sup>2</sup> -
GTIN (EAN)	4050118301601	16 mm <sup>2</sup>
Qty.	50 ST	

## ES EPG 60 ISO 16

**Weidmüller Interface GmbH & Co. KG**  
Klingenbergstraße 26  
D-32758 Detmold  
Germany

[www.weidmueller.com](http://www.weidmueller.com)

## Accessories

### Pin cable lugs



Insulated pin-cable connector made from PVC or PC/PA

- Conventional designs
- Not soldered
- With conical entry funnel

### General ordering data

Type	KSI/-16	Version	
Order No.	<a href="#">1491440000</a>	cable lug, terminal end, Insulated cable connector, 16 mm <sup>2</sup> , 16 mm <sup>2</sup>	
GTIN (EAN)	4050118301427		
Qty.	50 ST		