

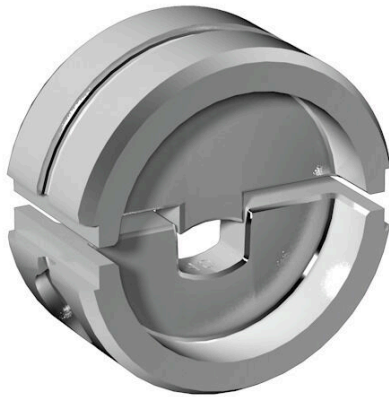
ES EPG 60 ISO 10**Weidmüller Interface GmbH & Co. KG**

Klingenbergstraße 26

D-32758 Detmold

Germany

www.weidmueller.com



Crimping tools for cable lugs, connectors and wire-end ferrules with interchangeable inserts

- extremely fast processing thanks to hydraulic support
- large processing range up to 300 mm²
- 270° revolving quick-action crimping head
- automatic pressure limitation and monitoring via pressure sensor
- electronic control and monitoring of the crimping process
- Saving of all crimping cycles and error messages to internal memory
- Reading of all cycles and error messages via USB
- Li-ion rechargeable battery with charge status indicator: 18 V, 2 Ah

General ordering data

Version	Crimping tool insert, 10mm ² , Oval crimping
Order No.	2577940000
Type	ES EPG 60 ISO 10
GTIN (EAN)	4050118590647
Qty.	1 items

ES EPG 60 ISO 10

Weidmüller Interface GmbH & Co. KG
 Klingenbergstraße 26
 D-32758 Detmold
 Germany

www.weidmueller.com

Technical data

Dimensions and weights

Depth	22 mm	Depth (inches)	0.8661 inch
Height	42 mm	Height (inches)	1.6535 inch
Width	42 mm	Width (inches)	1.6535 inch
Net weight	25 g		

Environmental Product Compliance

RoHS Compliance Status	Compliant without exemption
REACH SVHC	No SVHC above 0.1 wt%

Crimp inserts

Crimping width	7 mm	Crimp cross-section copper	10
Crimping width in mm	7		

Description of contact

Type of contact	Insulated connector	Conductor cross-section, max. AWG	8
Conductor cross-section, min. AWG	8	Crimping range, max.	10 mm ²

tool data crimping

Crimping type/profile	Oval crimping
Cable lug cross section	nominal 10 mm ²

Classifications

ETIM 8.0	EC001282	ETIM 9.0	EC001282
ETIM 10.0	EC001282	ECLASS 14.0	21-04-90-90
ECLASS 15.0	21-04-90-90		

Accessories

Crimp cable lugs



Insulated cable connector in PVC or PC/PA

- Conventional designs
- Not soldered
- With conical entry funnel, except for joint connector

General ordering data

Type	KQI-M10/-10	Version
Order No.	1492470000	cable lug, terminal end, Insulated cable connector, 10 mm ² , 10 mm ² -
GTIN (EAN)	4050118302233	10 mm ²
Qty.	50 ST	
Type	KQI-M10/-16	Version
Order No.	1492510000	cable lug, terminal end, Insulated cable connector, 16 mm ² , 16 mm ² -
GTIN (EAN)	4050118302288	16 mm ²
Qty.	50 ST	
Type	KQI-M5/-10	Version
Order No.	1492430000	cable lug, terminal end, Insulated cable connector, 10 mm ² , 10 mm ² -
GTIN (EAN)	4050118302349	10 mm ²
Qty.	50 ST	
Type	KQI-M6/-10	Version
Order No.	1492440000	cable lug, terminal end, Insulated cable connector, 10 mm ² , 10 mm ² -
GTIN (EAN)	4050118302356	10 mm ²
Qty.	50 ST	
Type	KQI-M8/-10	Version
Order No.	1492450000	cable lug, terminal end, Insulated cable connector, 10 mm ² , 10 mm ² -
GTIN (EAN)	4050118302226	10 mm ²
Qty.	50 ST	

Forked cable lugs



Insulated forked-cable connector made from PVC or PC/PA

- Conventional designs
- Not soldered
- With conical entry funnel

General ordering data

Type	KQIG-M5/-10	Version
Order No.	1491330000	cable lug, terminal end, Insulated cable connector, 10 mm ² , 10 mm ² -
GTIN (EAN)	4050118301335	10 mm ²
Qty.	50 ST	

ES EPG 60 ISO 10

Weidmüller Interface GmbH & Co. KG
 Klingenbergstraße 26
 D-32758 Detmold
 Germany

www.weidmueller.com

Accessories

Type	KQIG-M6/-10	Version	
Order No.	1491340000		cable lug, terminal end, Insulated cable connector, 10 mm ² , 10 mm ² -
GTIN (EAN)	4050118301304		10 mm ²
Qty.	50 ST		

Pin cable lugs



Insulated pin-cable connector made from PVC or PC/PA

- Conventional designs
- Not soldered
- With conical entry funnel

General ordering data

Type	KSI/-10	Version	
Order No.	1491430000		cable lug, terminal end, Insulated cable connector, 10 mm ² , 10 mm ²
GTIN (EAN)	4050118301403		
Qty.	50 ST		