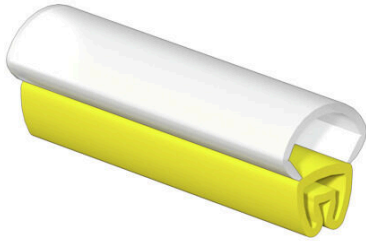


**VT-TM 0/18 HF-V0**

**Weidmüller Interface GmbH & Co. KG**  
Klingenbergstraße 26  
D-32758 Detmold  
Germany

[www.weidmueller.com](http://www.weidmueller.com)



**General ordering data**

Version	, Socket x 5.3 mm, Polyester, TPU, Colour: yellow, Transparent, Conductor O.D.: 1.3 - 3 mm
Order No.	<a href="#">2571280000</a>
Type	VT-TM 0/18 HF-V0
GTIN (EAN)	4050118608410
Qty.	200 items

## VT-TM 0/18 HF-V0

**Weidmüller Interface GmbH & Co. KG**  
 Klingenbergstraße 26  
 D-32758 Detmold  
 Germany

www.weidmueller.com

## Technical data

### Approvals

ROHS	Conform
------	---------

### Dimensions and weights

Depth	6.15 mm	Depth (inches)	0.2421 inch
Height	18 mm	Height (inches)	0.7087 inch
Width	5.3 mm	Width (inches)	0.2087 inch
Net weight	0.14 g		

### Temperatures

Operating temperature range	-30...90 °C
-----------------------------	-------------

### Environmental Product Compliance

RoHS Compliance Status	Compliant without exemption
REACH SVHC	No SVHC above 0.1 wt%

### General data

Type of printing	neutral	Width	5.3 mm
UL 94 flammability rating	V-0	Operating temperature range, max.	90 °C
Operating temperature range, min.	-30 °C	Colour	yellow, Transparent
Halogen	No	Basic material	Polyester, TPU
Printed characters	without	Recommended industries	Transportation, Machinery
Operating temperature range	-30...90 °C		

### Conductor and cable markers

Halogen	No	Conductor cross-section, max.	0.5 mm <sup>2</sup>
Conductor cross-section, min.	0.22 mm <sup>2</sup>	Conductor O.D., max.	3 mm
Conductor O.D., min.	1.3 mm	Conductor O.D.	1.3 - 3 mm
Cross-section for connected wire	0.22 - 0.5 mm <sup>2</sup>		

### Classifications

ETIM 8.0	EC001530	ETIM 9.0	EC001530
ETIM 10.0	EC001530	ECLASS 14.0	27-28-11-02
ECLASS 15.0	27-28-11-02		

**VT-TM 0/18 HF-V0**

**Weidmüller Interface GmbH & Co. KG**  
 Klingenbergstraße 26  
 D-32758 Detmold  
 Germany

www.weidmueller.com

**Accessories**

**Blank**



TM-I is an acknowledged and accredited marker type for traffic engineering applications. There are various different tag lengths available for individual labelling with long character strings. Easy handling of separation and installation thanks to the project marker field. Pre-attachment of sleeves and retrofitting of tags offer excellent versatility

The special contour of TM-I allows easy assembly and secures firm positioning. They are compatible with a number of commercially available sleeves. Thanks to the MultiCard format, the tags can be printed quickly and conveniently with the PrintJet CONNECT, plotter or the STI pen.

- Easy handling of separation and installation thanks to the project marker field.
- Acknowledged and accredited marker for traffic engineering applications
- Pre-attachment of sleeves and retrofitting of tags offer excellent versatility
- Not suited for labelling with P-Ink or STI pen in connection with CLI T sleeves

For custom printing: Please send us a file of our labeling software M-Print PRO or M-Print PRO Online (without installation) for your labeling specifications.

**General ordering data**

Type	TM-I 18 MC NE WS	Version
Order No.	<a href="#">1718431044</a>	TM-I, Insert markers, 1.5 - 22 mm, 18 x 4 mm, white
GTIN (EAN)	4008190349011	
Qty.	320 ST	
Type	TM-I 18 MC NE GE	Version
Order No.	<a href="#">1718431687</a>	TM-I, Insert markers, 1.5 - 22 mm, 18 x 4 mm, yellow
GTIN (EAN)	4008190349028	
Qty.	320 ST	
Type	TM-I 18 MC NE RT	Version
Order No.	<a href="#">1718431686</a>	TM-I, Insert markers, 1.5 - 22 mm, 18 x 4 mm, red
GTIN (EAN)	4008190397449	
Qty.	320 ST	
Type	TM-I 18 MC NE GN	Version
Order No.	<a href="#">1718431688</a>	TM-I, Insert markers, 1.5 - 22 mm, 18 x 4 mm, green
GTIN (EAN)	4008190398699	
Qty.	320 ST	
Type	VT-TM-I 18 MC NE WS	Version
Order No.	<a href="#">1714101044</a>	TM-I, Insert markers, 1.3 - 35 mm, 18 x 4 mm, white
GTIN (EAN)	4008190332518	
Qty.	640 ST	
Type	VT-TM-I 18 MC NE GE	Version
Order No.	<a href="#">1714101687</a>	TM-I, Insert markers, 1.3 - 35 mm, 18 x 4 mm, yellow
GTIN (EAN)	4008190332532	
Qty.	640 ST	
Type	VT-TM-I 18 MC NE RT	Version
Order No.	<a href="#">1714101686</a>	TM-I, Insert markers, 1.3 - 35 mm, 18 x 4 mm, red
GTIN (EAN)	4008190332525	
Qty.	640 ST	

## VT-TM 0/18 HF-V0

**Weidmüller Interface GmbH & Co. KG**  
 Klingenbergstraße 26  
 D-32758 Detmold  
 Germany

www.weidmueller.com

## Accessories

Type	VT-TM-I 18 MC NE BL	Version
Order No.	<a href="#">1714101693</a>	TM-I, Insert markers, 1.3 - 35 mm, 18 x 4 mm, blue
GTIN (EAN)	4008190332556	
Qty.	640 ST	
Type	VT-TM-I 18 MC NE GN	Version
Order No.	<a href="#">1714101688</a>	TM-I, Insert markers, 1.3 - 35 mm, 18 x 4 mm, green
GTIN (EAN)	4008190332549	
Qty.	640 ST	
Type	VT-TM-I 18 MC NE OR	Version
Order No.	<a href="#">1714101690</a>	TM-I, Insert markers, 1.3 - 35 mm, 18 x 4 mm, orange
GTIN (EAN)	4008190368623	
Qty.	640 ST	
Type	VT-TM-I 18 MC NE GR	Version
Order No.	<a href="#">1798060000</a>	TM-I, Insert markers, 2.5 - 35 mm, 18 x 4 mm, grey
GTIN (EAN)	4032248241040	
Qty.	640 ST	

## TM-I 15



## Process reliability: TM-I

TM-I inlay tags have a guide tab which allows them to slide easily into the transparent sleeves from the type TM. Once the tag is in place, the tab is snapped off at the predetermined break point. The ready-assembled sleeves can then be simply pushed over the conductors. Your benefits: large quantities can be efficiently pre-assembled in a single step.

## General ordering data

Type	TM-I 15 MM WS	Version
Order No.	<a href="#">2005450000</a>	TM-I, Insert markers, 1.3 - 35 mm, 15 x 4 mm, white
GTIN (EAN)	4050118390346	
Qty.	2000 ST	
Type	TM-I 15 MM GE	Version
Order No.	<a href="#">2005580000</a>	TM-I, Insert markers, 1.3 - 35 mm, 15 x 4 mm, yellow
GTIN (EAN)	4050118390353	
Qty.	2000 ST	
Type	TM-I 15 MM RT	Version
Order No.	<a href="#">2005760000</a>	TM-I, Insert markers, 1.3 - 35 mm, 15 x 4 mm, red
GTIN (EAN)	4050118390360	
Qty.	2000 ST	
Type	TM-I 15 MM BL	Version
Order No.	<a href="#">2005910000</a>	TM-I, Insert markers, 1.3 - 35 mm, 15 x 4 mm, blue
GTIN (EAN)	4050118390285	
Qty.	2000 ST	