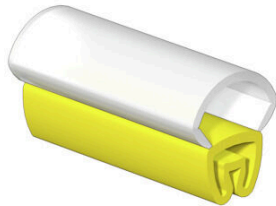


VT-TM 0/12 HF-V0

Weidmüller Interface GmbH & Co. KG
Klingenbergstraße 26
D-32758 Detmold
Germany

www.weidmueller.com



General ordering data

Version	x 5.3 mm, TPU, Colour: yellow, Transparent
Order No.	2571270000
Type	VT-TM 0/12 HF-V0
GTIN (EAN)	4050118608403
Qty.	200 items

VT-TM 0/12 HF-V0

Weidmüller Interface GmbH & Co. KG

Klingenbergstraße 26

D-32758 Detmold

Germany

www.weidmueller.com

Technical data

Approvals

ROHS	Conform
------	---------

Dimensions and weights

Height	12 mm	Height (inches)	0.4724 inch
Width	5.3 mm	Width (inches)	0.2087 inch
Net weight	0.08 g		

Environmental Product Compliance

RoHS Compliance Status	Compliant without exemption
REACH SVHC	No SVHC above 0.1 wt%

General data

Type of printing	neutral	Width	5.3 mm
UL 94 flammability rating	V-0	Operating temperature range, max.	90 °C
Operating temperature range, min.	-30 °C	Colour	yellow, Transparent
Halogen	No	Basic material	TPU
Printed characters	without		

Conductor and cable markers

Halogen	No	Conductor cross-section, max.	0.5 mm ²
Conductor cross-section, min.	0.22 mm ²	Conductor O.D., max.	3 mm
Conductor O.D., min.	1.3 mm		

Classifications

ETIM 8.0	EC001530	ETIM 9.0	EC001530
ETIM 10.0	EC001530	ECLASS 14.0	27-28-11-02
ECLASS 15.0	27-28-11-02		

VT-TM 0/12 HF-V0

Weidmüller Interface GmbH & Co. KG

Klingenbergstraße 26

D-32758 Detmold

Germany

www.weidmueller.com

Accessories

Blank



TM-I is an acknowledged and accredited marker type for traffic engineering applications. There are various different tag lengths available for individual labelling with long character strings. Easy handling of separation and installation thanks to the project marker field. Pre-attachment of sleeves and retrofitting of tags offer excellent versatility

The special contour of TM-I allows easy assembly and secures firm positioning. They are compatible with a number of commercially available sleeves. Thanks to the MultiCard format, the tags can be printed quickly and conveniently with the PrintJet CONNECT, plotter or the STI pen.

- Easy handling of separation and installation thanks to the project marker field.
- Acknowledged and accredited marker for traffic engineering applications
- Pre-attachment of sleeves and retrofitting of tags offer excellent versatility
- Not suited for labelling with P-Ink or STI pen in connection with CLI T sleeves

For custom printing: Please send us a file of our labeling software M-Print PRO or M-Print PRO Online (without installation) for your labeling specifications.

General ordering data

Type	TM-I 12 MC NE WS	Version
Order No.	1718411044	TM-I, Insert markers, 12 x 4 mm, white
GTIN (EAN)	4008190348977	
Qty.	320 ST	
Type	TM-I 12 MC NE GE	Version
Order No.	1718411687	TM-I, Insert markers, 1.5 - 22 mm, 12 x 4 mm, yellow
GTIN (EAN)	4008190348984	
Qty.	320 ST	
Type	TM-I 12 MC NE RT	Version
Order No.	1718411686	TM-I, Insert markers, 1.5 - 22 mm, 12 x 4 mm, red
GTIN (EAN)	4008190397463	
Qty.	320 ST	
Type	TM-I 12 MC NE BL	Version
Order No.	1718411693	TM-I, Insert markers, 1.5 - 22 mm, 12 x 4 mm, blue
GTIN (EAN)	4008190397456	
Qty.	320 ST	
Type	TM-I 12 MC NE GN	Version
Order No.	1718411688	TM-I, Insert markers, 1.5 - 22 mm, 12 x 4 mm, green
GTIN (EAN)	4008190398682	
Qty.	320 ST	
Type	TM-I 12 MC NE OR	Version
Order No.	1164190000	TM-I, Insert markers, 1.3 - 16 mm, 12 x 4 mm, orange
GTIN (EAN)	4032248953967	
Qty.	320 ST	
Type	TM-I 12 MC NE WS V0	Version
Order No.	1434760000	TM-I, Insert markers, 1.3 - 16 mm, 12 x 4 mm, white
GTIN (EAN)	4050118239508	
Qty.	320 ST	

VT-TM 0/12 HF-V0

Weidmüller Interface GmbH & Co. KG
 Klingenbergstraße 26
 D-32758 Detmold
 Germany

www.weidmueller.com

Accessories

Type	VT-TM-I 12 MC NE WS	Version
Order No.	1714091044	TM-I, Insert markers, 1.3 - 16 mm, 12 x 4 mm, white
GTIN (EAN)	4008190332457	
Qty.	640 ST	
Type	VT-TM-I 12 MC NE GE	Version
Order No.	1714091687	TM-I, Insert markers, 1.3 - 16 mm, 12 x 4 mm, yellow
GTIN (EAN)	4008190332471	
Qty.	640 ST	

TM-I 12



Process reliability: TM-I

TM-I inlay tags have a guide tab which allows them to slide easily into the transparent sleeves from the type TM. Once the tag is in place, the tab is snapped off at the predetermined break point. The ready-assembled sleeves can then be simply pushed over the conductors. Your benefits: large quantities can be efficiently pre-assembled in a single step.

General ordering data

Type	TM-I 12 MM WS	Version
Order No.	2005440000	TM-I, Insert markers, 1.3 - 16 mm, 12 x 4 mm, white
GTIN (EAN)	4050118390278	
Qty.	2000 ST	
Type	TM-I 12 MM GE	Version
Order No.	2005550000	TM-I, Insert markers, 1.3 - 16 mm, 12 x 4 mm, yellow
GTIN (EAN)	4050118390148	
Qty.	2000 ST	
Type	TM-I 12 MM RT	Version
Order No.	2005730000	TM-I, Insert markers, 1.3 - 16 mm, 12 x 4 mm, red
GTIN (EAN)	4050118390513	
Qty.	2000 ST	
Type	TM-I 12 MM BL	Version
Order No.	2005890000	TM-I, Insert markers, 1.3 - 16 mm, 12 x 4 mm, blue
GTIN (EAN)	4050118390414	
Qty.	2000 ST	