

PRO TOP1 240W 24V 10A F

Weidmüller Interface GmbH & Co. KG
 Klingenbergstraße 26
 D-32758 Detmold
 Germany

www.weidmueller.com



Illustration similar

Production processes constantly need to be made more efficient. As well as performance, energy efficiency and sustainability are also playing an increasingly important role in cutting-edge industry. PROtop power supplies combine excellent performance data with exemplary sustainability, which has a positive impact on the productivity of the entire production facility.

PROtop offers a number of advantages that give you a real competitive edge. These include the permanent reduction of energy costs thanks to high efficiencies as well as the increase in plant availability due to long service life and high MTBF values. In addition, there is a high functional density due to the extremely spacesaving designs.

PROtop can achieve significant savings compared to conventional power supply units. Its increased efficiency saves an average of 50 kWh per day in a medium-sized production facility with approx. 100 PROtop power supplies working in three-shift operation. This adds up to over 15,000 kWh a year and also improves the facility's carbon footprint. The service life, which is twice as long as that of standard power supplies, also sustainably reduces the costs of repurchase and exchange.

General ordering data

Version	Power supply, switch-mode power supply unit, 24 V
Order No.	2568990000
Type	PRO TOP1 240W 24V 10A F
GTIN (EAN)	4050118579710
Qty.	1 items

PRO TOP1 240W 24V 10A F

Weidmüller Interface GmbH & Co. KG
 Klingenbergstraße 26
 D-32758 Detmold
 Germany

www.weidmueller.com

Technical data

Approvals

Approvals



ROHS	Conform
UL File Number Search	UL Website
Certificate no. (cULus)	E258476
Certificate no. (cULusEX)	E470829

Dimensions and weights

Depth	125 mm	Depth (inches)	4.9212 inch
Height	130 mm	Height (inches)	5.1181 inch
Width	39 mm	Width (inches)	1.5354 inch
Net weight	1050 g		

Temperatures

Storage temperature	-40 °C...85 °C	Operating temperature	-25 °C...70 °C
Humidity at operating temperature	5...95 %, no condensation	Start-up	≥ -40 °C

Environmental Product Compliance

RoHS Compliance Status	Compliant with exemption
RoHS Exemption (if applicable/known)	6c, 7a, 7cI
REACH SVHC	Lead 7439-92-1
SCIP	6d8cdf22-8230-4af8-86c8-3558c716666d

Input

Connection system	PUSH IN with actuator		
AC input voltage range	85...277 V AC		
Recommended back-up fuse	5 A, DI / 6 A, Char. B / 6 A, Char C		
Frequency range AC	45...65 Hz		
Rated input voltage	110...240 V AC / 120...340 V DC		
Surge protection	Varistor		
Input fuse (internal)	Yes		
DC input voltage range	80 ... 410 V DC		
Inrush current	max. 5 A		
Current consumption in relation to the input voltage	Voltage type	AC	
	Input voltage	100 V	
	Input current	4 A	
	Voltage type	DC	
	Input voltage	120 V	
	Input current	4 A	
Nominal power consumption	260.9 VA		

Output

Output power	240 W
Mains failure bridge-over time	> 20 ms @ 115V AC/ 230 VAC

PRO TOP1 240W 24V 10A F

Weidmüller Interface GmbH & Co. KG
 Klingenbergstraße 26
 D-32758 Detmold
 Germany

www.weidmueller.com

Technical data

Connection system	PUSH IN with actuator		
Rated output voltage	24 V DC \pm 1 %		
Residual ripple, breaking spikes	<50 mVss @ UNenn, Full Load		
Parallel connection option	Yes, for redundancy and power increase (with ORing MOSFET)		
Output voltage, max.	28.8 V		
Output voltage, min.	22.5 V		
Output current, max.	10 A		
Output voltage, note	adjustable with potentiometer or communication module		
Nominal output current for Unom	10 A @ 60 °C		
Protection against inverse voltage	Yes		
DCL - peak load reserve	Boost duration	5 s	
	Multiple of the rated current	150 %	
	Boost duration	15 ms	
	Multiple of the rated current	600 %	
Ramp-up time	\leq 100 ms		

General data

Power factor (approx.)	> 0.9	AC failure bridging time @ Inom	> 20 ms @ 230 V AC / > 20 ms @ 115 V AC
Degree of efficiency	92 %	Protection degree	IP20
Surge voltage category	III, II	Mounting position, installation notice	Horizontal on DIN rail TS 35, top and bottom 50 mm clearance for free air flow, 10 mm clearance to neighbouring subassemblies.
Housing version	Metal, corrosion resistant	Derating	> 60°C (2.5% / 1°C)
Earth leakage current, max.	3.5 mA	Conformal coating	No
Power loss, idling	5 W	Short-circuit protection	Yes, internal
Power loss, nominal load	20.8 W		

EMC / shock / vibration

Shock resistance IEC 60068-2-27	30 g in all directions	Noise emission in accordance with EN55032	Class B
Interference immunity test acc. to	EN 55032:2015, EN 55024:2010/A1:2015, EN 55035:2017, EN 61000-3-2:2014, EN 61000-6-1:2007, EN 61000-6-2:2005, EN 61000-6-3:2007/A1:2011, EN 61000-6-4:2007/A1:2011	Vibration resistance IEC 60068-2-6	2.3 g (on DIN rail), 4 g (with direct mounting)

Insulation coordination

Surge voltage category	III, II	Pollution severity	2
Protection class	I, with PE connection	Insulation voltage, input/output	3.5 kV
Insulation voltage input / earth	3.2 kV	Insulation voltage output / earth	0.5 kV

Electrical safety (applied standards)

Electrical machine equipment	Acc. to EN60204	Safety extra-low voltage	SELV acc. to IEC 60950-1, PELV according to EN 60204-1, SELV according to EN 62368-1
Safety transformers for switch-mode power supplies	According to EN 61558-2-16		

PRO TOP1 240W 24V 10A F

Weidmüller Interface GmbH & Co. KG

Klingenbergstraße 26
D-32758 Detmold
Germany

www.weidmueller.com

Technical data

Connection data (input)

Connection system	PUSH IN with actuator	Number of terminals	3 for L/N/PE
Screwdriver blade	0.6 x 3.5	Conductor cross-section, AWG/kcmil , max.	12 AWG
Conductor cross-section, AWG/kcmil , min.	20 AWG	Wire connection cross section, flexible (input), max.	2.5 mm ²
Conductor cross-section, flexible , min.	0.5 mm ²	Conductor cross-section, rigid , max.	1.5 mm ²
Conductor cross-section, rigid , min.	0.5 mm ²		

Connection data (output)

Connection system	PUSH IN with actuator	Number of terminals	4 (++ / -)
Conductor cross-section, AWG/kcmil , max.	12 AWG	Conductor cross-section, AWG/kcmil , min.	26 AWG
Conductor cross-section, flexible , max.	2.5 mm ²	Conductor cross-section, flexible , min.	0.2 mm ²
Conductor cross-section, rigid , max.	2.5 mm ²	Conductor cross-section, rigid , min.	0.2 mm ²
Screwdriver blade	0.6 x 3.5		

Connection data (signal)

Wire connection cross-section, flexible (signal), max.	1.5 mm ²	Wire connection method	PUSH IN
Wire cross-section, AWG/kcmil , max.	16	Wire cross-section, solid , min.	0.14 mm ²
Wire cross-section, solid , max.	1.5 mm ²	Wire connection cross-section, flexible (signal), min.	0.14 mm ²
Wire cross-section, AWG/kcmil , min.	26 mm ²		

Signalling

Floating contact	Yes	LED green/red	Green: Operation (failure-free), Flashing green: advance warning I>90%, Green/red flashing: output switched off (switch-off mode), Flashing red: overload/error
Status relay (max. load)	Output voltage OK (30 V DC / 1 A)		

Classifications

ETIM 8.0	EC002540	ETIM 9.0	EC002540
ETIM 10.0	EC002540	ECLASS 14.0	27-04-07-01
ECLASS 15.0	27-04-07-01		

PRO TOP1 240W 24V 10A F

Weidmüller Interface GmbH & Co. KG
Klingenbergstraße 26
D-32758 Detmold
Germany

Drawings

www.weidmueller.com



PRO TOP1 240W 24V 10A F

Weidmüller Interface GmbH & Co. KG
 Klingenbergstraße 26
 D-32758 Detmold
 Germany

www.weidmueller.com

Accessories

End bracket



Weidmüller's range of products includes end brackets that guarantee a permanent, reliable mounting on the terminal rail and prevent sliding. Versions with and without screws are available. The end brackets include marking options, also for group markers, and also a test plug holder.

General ordering data

Type	WEW 35/1 V0 GF SW	Version	
Order No.	1478990000	End bracket, black, TS 35, V-0, Wemid, Width: 12 mm, 130 °C	
GTIN (EAN)	4050118286892		
Qty.	50 ST		
Type	WEW 35/2 V0 GF SW	Version	
Order No.	1479000000	End bracket, black, TS 35, V-0, Wemid, Width: 8 mm, 130 °C	
GTIN (EAN)	4050118286779		
Qty.	50 ST		

Slotted screwdriver



VDE insulated screwdriver sets, for working on live parts up to 1000 V AC and 1500 V DC, DIN EN 60900. IEC 900. Each piece is "GS" safety tested. Blade made from fully hardened, high-alloy chromium-vanadium-molybdenum steel, gun-metal finish.

General ordering data

Type	SDIS SLIM 0.6X3.5X100	Version	
Order No.	2749610000	Mounting tool, Blade width (B): 3.5 mm, Blade length: 100 mm, Blade thickness (A): 0.6 mm	
GTIN (EAN)	4050118896350		
Qty.	1 ST		

Installation



Mounting accessory for Weidmüller Power Supplies.

PRO TOP1 240W 24V 10A F

Weidmüller Interface GmbH & Co. KG
 Klingenbergstraße 26
 D-32758 Detmold
 Germany

www.weidmueller.com

Accessories

General ordering data

Type	PRO TOP BRACKETS	Version
Order No.	257590000	Mounting foot
GTIN (EAN)	4050118683059	
Qty.	1 ST	
Type	MTA 30 MF	Version
Order No.	125132000	Electronics housings, Mounting flange
GTIN (EAN)	4050118042702	
Qty.	20 ST	
Type	CP A WALLADAPTER 30 MM	Version
Order No.	146187000	
GTIN (EAN)	4050118268225	
Qty.	1 ST	

Communication modules



Weidmüller's plug-in communication modules enable individual components to exchange relevant data with the cloud. This lays the foundation for targeted process optimization using condition monitoring and remote controllability - factors that play a decisive role in increasing efficiency, quality, process stability and availability can contribute. The communication modules are designed according to IP20 protected, can be operated without tools and can be flexibly adapted to different customisable communication protocols.

General ordering data

Type	PRO COM CAN OPEN	Version
Order No.	246732000	Communication module
GTIN (EAN)	4050118482225	
Qty.	1 ST	
Type	PRO COM CAN OPEN EX	Version
Order No.	246734000	Communication module
GTIN (EAN)	4050118481822	
Qty.	1 ST	
Type	PRO COM DISPLAY 7S	Version
Order No.	246696000	Communication module
GTIN (EAN)	4050118481808	
Qty.	1 ST	
Type	PRO COM IO-LINK	Version
Order No.	258736000	Communication module
GTIN (EAN)	4050118599152	
Qty.	1 ST	

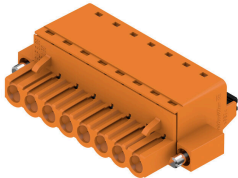
PRO TOP1 240W 24V 10A F

Weidmüller Interface GmbH & Co. KG
 Klingenbergstraße 26
 D-32758 Detmold
 Germany

www.weidmueller.com

Accessories

BLF 5.08HC/180F SN



Just as reliable as the millionfold proven original and featuring innovative details:

The BLF 5.08HC PUSH IN version of the BLZP 5.08HC female connector is not only different in terms of connection system; it also has a more compact design. Weidmüller's innovative PUSH IN spring connection system stands for the future of easy and tool-free wire connection. HC = High Current.

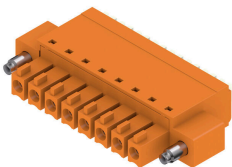
In terms of versatility, the BLF 5.08HC offers just as much as the version which served as a model:

- 3 tested-and-proven wire outlet directions provide the usual flexibility for application-specific design
- 4 flange variations and the patented release latch allow the locking concept to be based on the requirements of the user
- Use the BLF 5.08HC and SL 5.08HC plug combination to reach the max. rated specifications

General ordering data

Type	BLF 5.08HC/03/180F SN B...	Version
Order No.	1012650000	PCB plug-in connector, female plug, 5.08 mm, Number of poles: 3,
GTIN (EAN)	4032248720309	180°, PUSH IN with actuator, Clamping range, max. : 3.31 mm², Box
Qty.	72 ST	

BCF 3.81/180F



PUSH IN - Weidmüller's innovative connection system simplifies the wire connection process.

The benefits for users and applications:

- High packaging density due to very low component height. Simply insert the prepared wire - finished
- High component density with the compact SCDN / SCDN-THR two-tier pin header
- Simplified processing due to integrated push buttons for opening the clamping unit
- Intuitive handling – since the wire-entry area and handling area are clearly separated
- tool-free locking and releasing when using Weidmüller's patented release latch (LR)

The Weidmüller plug-in connectors, pitch 3.81 mm (0.15 inch), are compatible with the layout of customary plug-in connectors, can be coded and provide space for printing.

General ordering data

Type	BCF 3.81/03/180F SN BK ...	Version
Order No.	1347850000	PCB plug-in connector, female plug, 3.81 mm, Number of poles: 3,
GTIN (EAN)	4050118152517	180°, PUSH IN with push button, Clamping range, max. : 1.5 mm²,
Qty.	50 ST	Box

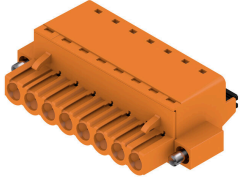
PRO TOP1 240W 24V 10A F

Weidmüller Interface GmbH & Co. KG
 Klingenbergstraße 26
 D-32758 Detmold
 Germany

Accessories

www.weidmueller.com

BLF 5.00HC/180F SN



Just as reliable as the millionfold proven original and featuring innovative details:

The BLF 5.00HC PUSH IN version of the BLZ 5.00HC female connector features a new connection system and a more compact design. Weidmüller's innovative PUSH IN spring connection system stands for the future of easy and tool-free wire connection. HC = High Current. In terms of versatility, the BLF 5.00HC offers just as much as the older versions:

- 3 tested-and-proven wire outlet directions provide the usual flexibility for application-specific design
- 4 flange variations and the patented release latch allow the locking concept to be based on the requirements of the user

General ordering data

Type	BLF 5.00HC/04/180F SN B...	Version
Order No.	2568270000	PCB plug-in connector, female plug, 5.00 mm, Number of poles: 4,
GTIN (EAN)	4050118578805	180°, PUSH IN with actuator, Clamping range, max. : 3.31 mm², Box
Qty.	72 ST	