

HDC HP550 STGH CR 1P**Weidmüller Interface GmbH & Co. KG**

Klingenbergstraße 26

D-32758 Detmold

Germany

www.weidmueller.com



The protective housing is manufactured from seawater-resistant aluminium using pressure die casting. High standards of water and dust protection, as well as particularly high impact resistance, are the hallmarks of this housing series.

A sophisticated two-stage surface coating ensures years of reliability.

All screws, crimp contacts and other exterior accessory parts are made of corrosion-resistant stainless steel.

General ordering data

Order No.	2568600000
Type	HDC HP550 STGH CR 1P
GTIN (EAN)	4050118776621
Qty.	1 items

HDC HP550 STGH CR 1P

Weidmüller Interface GmbH & Co. KG
 Klingenbergstraße 26
 D-32758 Detmold
 Germany

www.weidmueller.com

Technical data

Approvals

Approvals



Dimensions and weights

Net weight 431 g

Environmental Product Compliance

RoHS Compliance Status Compliant without exemption
 REACH SVHC No SVHC above 0.1 wt%

General data

Design of housing	Bulkhead housing	UL 94 flammability rating	None
Colour	black	Housing main material	diecast aluminium
Surface finish	Powder-coated	Free from halogens	false
EMC housings	Yes	Protection degree	IP68, in plugged condition

General data

Colour	black	Surface finish	Powder-coated
--------	-------	----------------	---------------

Important note

Product information Depending on the intended operation, internally generated voltages can superimpose the working voltage and contain corresponding peaks. It is imperative to ensure that these peak voltages do not exceed the rated voltage. For applications outside of this specification, please contact us.

Classifications

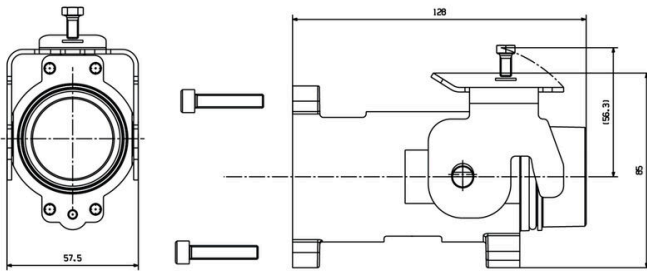
ETIM 8.0	EC000437	ETIM 9.0	EC000437
ETIM 10.0	EC000437	ECLASS 14.0	27-44-02-02
ECLASS 15.0	27-44-02-02		

HDC HP550 STGH CR 1P

Weidmüller Interface GmbH & Co. KG
Klingenbergstraße 26
D-32758 Detmold
Germany

Drawings

www.weidmueller.com



HDC HP550 STGH CR 1P

Weidmüller Interface GmbH & Co. KG
 Klingenbergstraße 26
 D-32758 Detmold
 Germany

www.weidmueller.com

Accessories

Crimp contacts



Crimps provide a electrical and mechanical connection between wire and contact that is both secure and reliable. The optimal crimp connection is gas-tight and corrosion-resistant.

General ordering data

Type	HDC HP 550 M 25	Version
Order No.	1220580000	HDC insert, Male, 3600 V, Crimp connection, Installation size: 550
GTIN (EAN)	4050118003857	
Qty.	1 ST	
Type	HDC HP 550 M 50	Version
Order No.	1157800000	HDC insert, Male, 3600 V, Crimp connection, Installation size: 550
GTIN (EAN)	4032248945337	
Qty.	1 ST	
Type	HDC HP 550 M 70	Version
Order No.	1268810000	HDC insert, Male, 3600 V, Crimp connection, Installation size: 550
GTIN (EAN)	4050118057720	
Qty.	1 ST	
Type	HDC HP 550 M 95	Version
Order No.	1079790000	HDC insert, Male, 3600 V, Crimp connection, Installation size: 550
GTIN (EAN)	4032248841653	
Qty.	1 ST	
Type	HDC HP 550 M 120	Version
Order No.	1079780000	HDC insert, Male, 3600 V, Crimp connection, Installation size: 550
GTIN (EAN)	4032248841899	
Qty.	1 ST	
Type	HDC HP 550 M 150	Version
Order No.	1119110000	HDC insert, Male, 3600 V, Crimp connection, Installation size: 550
GTIN (EAN)	4032248900367	
Qty.	1 ST	
Type	HDC HP 550 M 185	Version
Order No.	1120580000	HDC insert, Male, 3600 V, Crimp connection, Installation size: 550
GTIN (EAN)	4032248901821	
Qty.	1 ST	
Type	HDC HP 550 M 240	Version
Order No.	1120590000	HDC insert, Male, 3600 V, Crimp connection, Installation size: 550
GTIN (EAN)	4032248901739	
Qty.	1 ST	