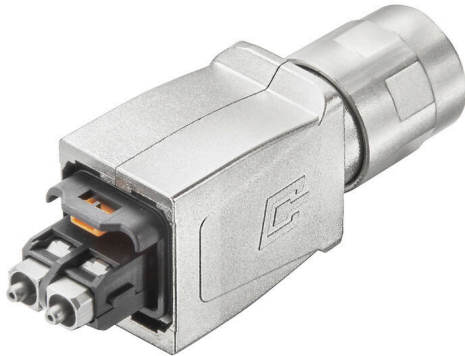


**IE-PS-V14M-2SC-POF-QA**

**Weidmüller Interface GmbH & Co. KG**  
Klingenbergstraße 26  
D-32758 Detmold  
Germany

www.weidmueller.com



PushPull plug-in connector set according to IEC  
61076-3-117 ver.14 (PROFINET), metal incl. SC insert

**General ordering data**

Version	FO connector, Version 14, SC-RJ POF, reconnectable, IP67
Order No.	<a href="#">2568260000</a>
Type	IE-PS-V14M-2SC-POF-QA
GTIN (EAN)	4050118578928
Qty.	10 items

## IE-PS-V14M-2SC-POF-QA

**Weidmüller Interface GmbH & Co. KG**  
 Klingenbergstraße 26  
 D-32758 Detmold  
 Germany

www.weidmueller.com

## Technical data

### Approvals

ROHS	Conform
------	---------

### Dimensions and weights

Depth	79.9 mm	Depth (inches)	3.1457 inch
Height	26.8 mm	Height (inches)	1.0551 inch
Width	22.7 mm	Width (inches)	0.8937 inch
Net weight	55.44 g		

### Temperatures

Storage temperature	Operating temperature	-40 °C...70 °C
Installation temperature		

### Environmental Product Compliance

RoHS Compliance Status	Compliant with exemption
RoHS Exemption (if applicable/known)	6c
REACH SVHC	Lead 7439-92-1
SCIP	4f3aae94-c2bc-4010-b63b-5b114ba6bd55

### General data

Description of article	Version 14, SC-RJ POF, reconnectable	Colour	Miscellaneous
Housing main material	Zinc diecast	Sheath diameter, max.	10 mm
Sheath diameter, min.	5 mm	Protection degree	IP67
Plugging cycles	750	Fibre type	POF
Insertion loss	≤ 1.0 dB	Connection 1	SCRJ
Connection 2	Rapid connection system: screwing, cutting	Housing material, insert	PA, Zinc diecast

### General standards

Connector standard	IEC 61076-3-117 Var. 14, IEC 61754-24
--------------------	--

### Classifications

ETIM 8.0	EC001122	ETIM 9.0	EC001122
ETIM 10.0	EC001122	ECLASS 14.0	19-17-01-22
ECLASS 15.0	19-17-01-22		