

HDC MBUS CF 8.5

Weidmüller Interface GmbH & Co. KG
Klingenbergstraße 26
D-32758 Detmold
Germany

www.weidmueller.com



Compact

The new two-pole bus module is extremely compact and can accommodate both megabit and gigabit data inserts. It enables the connection of 2 Gigabit Cat 6A cables (10 gigabit) to one module.

General ordering data

| | |
|------------|----------------------------|
| Version | Accessories |
| Order No. | 2566040000 |
| Type | HDC MBUS CF 8.5 |
| GTIN (EAN) | 4050118575880 |
| Qty. | 10 items |

HDC MBUS CF 8.5

Weidmüller Interface GmbH & Co. KG
 Klingenbergstraße 26
 D-32758 Detmold
 Germany

www.weidmueller.com

Technical data

Approvals

Approvals



ROHS Conform

Dimensions and weights

Net weight 3.7 g

Environmental Product Compliance

RoHS Compliance Status Compliant with exemption
 RoHS Exemption (if applicable/known) 6c
 REACH SVHC Lead 7439-92-1
 SCIP 6eabd5ae-2d6b-409e-8bdf-87c27ee10e40

General information on shielded sleeve

| | | |
|----------------------|---------|--------|
| Outer cable diameter | min. | 8 mm |
| | nominal | 8.5 mm |
| | max. | 8.5 mm |
| Material | Brass | |

Classifications

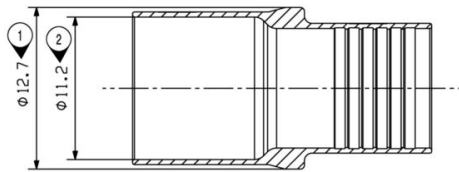
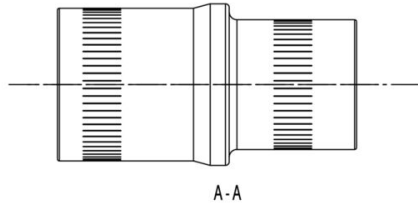
| | | | |
|-------------|-------------|-------------|-------------|
| ETIM 8.0 | EC002943 | ETIM 9.0 | EC002943 |
| ETIM 10.0 | EC002943 | ECLASS 14.0 | 27-44-02-92 |
| ECLASS 15.0 | 27-44-02-92 | | |

HDC MBUS CF 8.5

Weidmüller Interface GmbH & Co. KG
Klingenbergstraße 26
D-32758 Detmold
Germany

www.weidmueller.com

Drawings



HDC MBUS CF 8.5

Weidmüller Interface GmbH & Co. KG
 Klingenbergstraße 26
 D-32758 Detmold
 Germany

www.weidmueller.com

Accessories

Tools



Compact

The new two-pole bus module is extremely compact and can accommodate both megabit and gigabit data inserts. It enables the connection of 2 Gigabit Cat 6A cables (10 gigabit) to one module.

General ordering data

| | | | |
|------------|----------------------------|----------------------|--|
| Type | HDC MBUS CI B 8.0-9.1 | Version | |
| Order No. | 2592720000 | Crimping tool insert | |
| GTIN (EAN) | 4050118603927 | | |
| Qty. | 1 ST | | |
| Type | HDC MBUS CT B 8.0-9.1 | Version | |
| Order No. | 2592710000 | Pressing tool | |
| GTIN (EAN) | 4050118603910 | | |
| Qty. | 1 ST | | |