

**HDC MBUS CF 10.3****Weidmüller Interface GmbH & Co. KG**

Klingenbergstraße 26

D-32758 Detmold

Germany

www.weidmueller.com

**Compact**

The new two-pole bus module is extremely compact and can accommodate both megabit and gigabit data inserts. It enables the connection of 2 Gigabit Cat 6A cables (10 gigabit) to one module.

**General ordering data**

Version	Accessories
Order No.	<a href="#">2566010000</a>
Type	HDC MBUS CF 10.3
GTIN (EAN)	4050118575859
Qty.	10 items

**Technical data**

**Approvals**

Approvals



ROHS Conform

**Dimensions and weights**

Net weight 2.99 g

**Environmental Product Compliance**

RoHS Compliance Status Compliant with exemption  
 RoHS Exemption (if applicable/known) 6c  
 REACH SVHC Lead 7439-92-1  
 SCIP 6eabd5ae-2d6b-409e-8bdf-87c27ee10e40

**General information on shielded sleeve**

Outer cable diameter	min.	9.8 mm
	nominal	10.3 mm
	max.	10.3 mm
Material	Brass	

**Classifications**

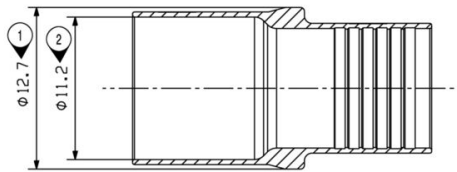
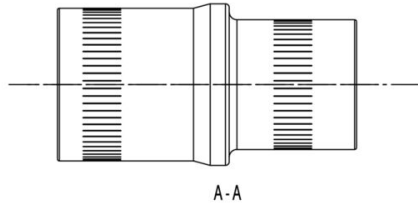
ETIM 8.0	EC002943	ETIM 9.0	EC002943
ETIM 10.0	EC002943	ECLASS 14.0	27-44-02-92
ECLASS 15.0	27-44-02-92		

**HDC MBUS CF 10.3**

**Weidmüller Interface GmbH & Co. KG**  
Klingenbergstraße 26  
D-32758 Detmold  
Germany

**Drawings**

[www.weidmueller.com](http://www.weidmueller.com)



## HDC MBUS CF 10.3

**Weidmüller Interface GmbH & Co. KG**  
Klingenbergstraße 26  
D-32758 Detmold  
Germany

[www.weidmueller.com](http://www.weidmueller.com)

## Accessories

### Tools



#### Compact

The new two-pole bus module is extremely compact and can accommodate both megabit and gigabit data inserts. It enables the connection of 2 Gigabit Cat 6A cables (10 gigabit) to one module.

### General ordering data

Type	HDC MBUS CI A 9.2-10.3	Version	
Order No.	<a href="#">2592700000</a>	Crimping tool insert	
GTIN (EAN)	4050118603903		
Qty.	1 ST		
Type	HDC MBUS CT A 9.2-10.3	Version	
Order No.	<a href="#">2592690000</a>	Pressing tool	
GTIN (EAN)	4050118603798		
Qty.	1 ST		