

## HDC 24B SBU 1M25G N

**Weidmüller Interface GmbH & Co. KG**

Klingenbergstraße 26

D-32758 Detmold

Germany

[www.weidmueller.com](http://www.weidmueller.com)



The special die-cast alloy and the multi-layered surface sealing provide complete protection for the HDC housings.

The cleverly designed interlock system is manufactured from stainless steel. This guarantees a long lifespan with high resistance to corrosion and impact.

The housing interlock system provides integrated safety. Our unique, patented spring system provides the housing interlock with a secure grip and prevents accidental opening.

The laser marking allows for easy and quick identification. Each housing is permanently labelled with a laser marking so that each product can be quickly designated and positioned.

Weidmüller RockStar® IP 65 / NEMA Type 4X housings - your first choice for industrial housings with IP 65 protection.

### General ordering data

|            |  |
|------------|--|
| Version    | HDC enclosures, Installation size: 8, Protection degree: IP65, in plugged condition, Base housing, Side-locking clamp on lower side, Standard, Size of cable entries: M 25 |
| Order No.  | <a href="#">2560960000</a>   |
| Type       | HDC 24B SBU 1M25G N  |
| GTIN (EAN) | 4050118673227  |
| Qty.       | 1 items  |

**HDC 24B SBU 1M25G N**

**Weidmüller Interface GmbH & Co. KG**  
 Klingenbergstraße 26  
 D-32758 Detmold  
 Germany

www.weidmueller.com

**Technical data**

**Approvals**

Approvals



|                         |                            |
|-------------------------|----------------------------|
| ROHS                    | Conform                    |
| UL File Number Search   | <a href="#">UL Website</a> |
| Certificate No. (cURus) | E92202                     |

**Dimensions and weights**

|                             |         |                            |             |
|-----------------------------|---------|----------------------------|-------------|
| Depth                       | 144 mm  | Depth (inches)             | 5.6693 inch |
| Height                      | 64 mm   | Height (inches)            | 2.5197 inch |
| Width                       | 57.5 mm | Width (inches)             | 2.2638 inch |
| Mounting dimension - height | 45 mm   | Mounting dimension - width | 132 mm      |
| Net weight                  | 393 g   |                            |             |

**Temperatures**

|                   |                   |
|-------------------|-------------------|
| Limit temperature | -40 °C ... 125 °C |
|-------------------|-------------------|

**Environmental Product Compliance**

|                        |                             |                         |
|------------------------|-----------------------------|-------------------------|
| RoHS Compliance Status | Compliant without exemption |                         |
| REACH SVHC             | No SVHC above 0.1 wt%       |                         |
| Chemical resistance    | Substance                   | Acetone                 |
|                        | Chemical resistance         | Conditionally resistant |
|                        | Substance                   | Drilling oil            |
|                        | Chemical resistance         | Resistant               |
|                        | Substance                   | Diesel                  |
|                        | Chemical resistance         | Resistant               |
|                        | Substance                   | Ethyl alcohol           |
|                        | Chemical resistance         | Resistant               |
|                        | Substance                   | Transmission oil        |
|                        | Chemical resistance         | Resistant               |
|                        | Substance                   | Hydraulic oil           |
|                        | Chemical resistance         | Resistant               |
|                        | Substance                   | Coolant                 |
|                        | Chemical resistance         | Resistant               |
|                        | Substance                   | Petroleum benzene       |
|                        | Chemical resistance         | Resistant               |
|                        | Substance                   | Sweat                   |
|                        | Chemical resistance         | Resistant               |
|                        | Substance                   | Premium gasoline        |
|                        | Chemical resistance         | Conditionally resistant |
| Substance              | Water                       |                         |
| Chemical resistance    | Resistant                   |                         |
| Substance              | UV                          |                         |
| Chemical resistance    | Unstable                    |                         |
| Substance              | Ozone                       |                         |
| Chemical resistance    | Unstable                    |                         |

**Dimensions**

|                      |        |               |           |
|----------------------|--------|---------------|-----------|
| Hole pitch length A2 | 132 mm | Cable entry   | w. thread |
| Width housing C      | 43 mm  | Width base C1 | 57.5 mm   |

## HDC 24B SBU 1M25G N

**Weidmüller Interface GmbH & Co. KG**  
 Klingenbergstraße 26  
 D-32758 Detmold  
 Germany

www.weidmueller.com

## Technical data

|                      |        |                     |       |
|----------------------|--------|---------------------|-------|
| Total length housing | 120 mm | Height of housing B | 64 mm |
| Height of base B1    | 5 mm   |                     |       |

### General data

|                |                |                   |                            |
|----------------|----------------|-------------------|----------------------------|
| Surface finish | Powder coating | Protection degree | IP65, in plugged condition |
|----------------|----------------|-------------------|----------------------------|

### Version

|                                |                                  |                              |                    |
|--------------------------------|----------------------------------|------------------------------|--------------------|
| Size of cable entries          | M 25                             | Top part/bottom part/lid     | lower part         |
| Cover                          | without cover                    | Number of cable entry on top | 1                  |
| Number of cable entry sideways | 1                                | Design of housing            | Base housing       |
| Design of locking system       | Side-locking clamp on lower side | Design                       | Standard           |
| Installation size              | 8                                | Cable entry                  | w. thread          |
| Type                           | Base housing                     | Clamp version                | Side-locking clamp |
| Sealing                        | NBR                              | Internal thread              | M 25               |
| Colour (RAL)                   | RAL 7035                         | BG                           | 8                  |
| Suitable for ModuPlug®         | No                               |                              |                    |

### Classifications

|             |             |             |             |
|-------------|-------------|-------------|-------------|
| ETIM 8.0    | EC000437    | ETIM 9.0    | EC000437    |
| ETIM 10.0   | EC000437    | ECLASS 14.0 | 27-44-02-02 |
| ECLASS 15.0 | 27-44-02-02 |             |             |

## HDC 24B SBU 1M25G N

**Weidmüller Interface GmbH & Co. KG**

Klingenbergstraße 26  
D-32758 Detmold  
Germany

[www.weidmueller.com](http://www.weidmueller.com)

## Accessories

### Hood, Cable Entry at top



The special die-cast alloy and the multi-layered surface sealing provide complete protection for the HDC housings.

The cleverly designed interlock system is manufactured from stainless steel. This guarantees a long lifespan with high resistance to corrosion and impact.

The housing interlock system provides integrated safety. Our unique, patented spring system provides the housing interlock with a secure grip and prevents accidental opening.

The laser marking allows for easy and quick identification. Each housing is permanently labelled with a laser marking so that each product can be quickly designated and positioned.

Weidmüller RockStar® IP 65 / NEMA Type 4X housings - your first choice for industrial housings with IP 65 protection.

### General ordering data

|            |                            |   |
|------------|----------------------------|---|
| Type       | HDC 64D TOBU 2M32G         | Version   |
| Order No.  | <a href="#">1009710000</a> | HDC enclosures, Installation size: 8, Protection degree: IP65, in   |
| GTIN (EAN) | 4032248771394              | plugged condition, Cable entry from top, Plug housing, Side-locking |
| Qty.       | 1 ST                       | clamp on lower side, high, Size of cable entries: M 32              |
| Type       | HDC 64D TOBU 1M40G         | Version   |
| Order No.  | <a href="#">1045560000</a> | HDC enclosures, Installation size: 8, Protection degree: IP65, in   |
| GTIN (EAN) | 4032248780532              | plugged condition, Cable entry from top, Plug housing, Side-locking |
| Qty.       | 1 ST                       | clamp on lower side, high, Size of cable entries: M 40              |

### XXL plug housing, cable entry on top



The special die-cast alloy and the multi-layered surface sealing provide complete protection for the HDC housings.

The cleverly designed interlock system is manufactured from stainless steel. This guarantees a long lifespan with high resistance to corrosion and impact.

The housing interlock system provides integrated safety. Our unique, patented spring system provides the housing interlock with a secure grip and prevents accidental opening.

The laser marking allows for easy and quick identification. Each housing is permanently labelled with a laser marking so that each product can be quickly designated and positioned.

Weidmüller RockStar® IP 65 / NEMA Type 4X housings - your first choice for industrial housings with IP 65 protection.

### General ordering data

|            |                            |   |
|------------|----------------------------|---|
| Type       | HDC 64D TOBU 1M50G         | Version   |
| Order No.  | <a href="#">1111140000</a> | HDC enclosures, Installation size: 8, Protection degree: IP65, in   |
| GTIN (EAN) | 4032248964413              | plugged condition, Cable entry from top, Plug housing, Side-locking |
| Qty.       | 1 ST                       | clamp on lower side, high, Size of cable entries: M 50              |

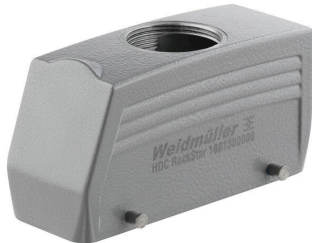
## HDC 24B SBU 1M25G N

**Weidmüller Interface GmbH & Co. KG**  
 Klingenbergstraße 26  
 D-32758 Detmold  
 Germany

www.weidmueller.com

## Accessories

### Hood, Cable Entry at top



The special die-cast alloy and the multi-layered surface sealing provide complete protection for the HDC housings.

The cleverly designed interlock system is manufactured from stainless steel. This guarantees a long lifespan with high resistance to corrosion and impact.

The housing interlock system provides integrated safety. Our unique, patented spring system provides the housing interlock with a secure grip and prevents accidental opening.

The laser marking allows for easy and quick identification. Each housing is permanently labelled with a laser marking so that each product can be quickly designated and positioned.

Weidmüller RockStar® IP 65 / NEMA Type 4X housings - your first choice for industrial housings with IP 65 protection.

### General ordering data

|            |                            |   |
|------------|----------------------------|---|
| Type       | HDC 24B TOBU 1PG21G        | Version   |
| Order No.  | <a href="#">1661370000</a> | HDC enclosures, Installation size: 8, Protection degree: IP65, in   |
| GTIN (EAN) | 4008190417925              | plugged condition, Cable entry from top, Plug housing, Side-locking |
| Qty.       | 1 ST                       | clamp on lower side, Standard, Size of cable entries: PG 21         |
| Type       | HDC 24B TOBU 1PG29G        | Version   |
| Order No.  | <a href="#">1661380000</a> | HDC enclosures, Installation size: 8, Protection degree: IP65, in   |
| GTIN (EAN) | 4008190417932              | plugged condition, Cable entry from top, Plug housing, Side-locking |
| Qty.       | 1 ST                       | clamp on lower side, Standard, Size of cable entries: PG 29         |
| Type       | HDC 64D TOBU 1PG21G        | Version   |
| Order No.  | <a href="#">1661440000</a> | HDC enclosures, Installation size: 8, Protection degree: IP65, in   |
| GTIN (EAN) | 4008190417994              | plugged condition, Cable entry from top, Plug housing, Side-locking |
| Qty.       | 1 ST                       | clamp on lower side, high, Size of cable entries: PG 21             |
| Type       | HDC 64D TOBU 1PG29G        | Version   |
| Order No.  | <a href="#">1661460000</a> | HDC enclosures, Installation size: 8, Protection degree: IP65, in   |
| GTIN (EAN) | 4008190418014              | plugged condition, Cable entry from top, Plug housing, Side-locking |
| Qty.       | 1 ST                       | clamp on lower side, high, Size of cable entries: PG 29             |
| Type       | HDC 64D TOBU 1M32G         | Version   |
| Order No.  | <a href="#">1786830000</a> | HDC enclosures, Installation size: 8, Protection degree: IP65, in   |
| GTIN (EAN) | 4032248204076              | plugged condition, Cable entry from top, Plug housing, Side-locking |
| Qty.       | 1 ST                       | clamp on lower side, high, Size of cable entries: M 32              |
| Type       | HDC 24B TOBU 1M32G         | Version   |
| Order No.  | <a href="#">1787810000</a> | HDC enclosures, Installation size: 8, Protection degree: IP65, in   |
| GTIN (EAN) | 4032248205257              | plugged condition, Cable entry from top, Plug housing, Side-locking |
| Qty.       | 1 ST                       | clamp on lower side, Standard, Size of cable entries: M 32          |
| Type       | HDC 24B TOBU 1M25G         | Version   |
| Order No.  | <a href="#">1787820000</a> | HDC enclosures, Installation size: 8, Protection degree: IP65, in   |
| GTIN (EAN) | 4032248205264              | plugged condition, Cable entry from top, Plug housing, Side-locking |
| Qty.       | 1 ST                       | clamp on lower side, Standard, Size of cable entries: M 25          |
| Type       | HDC 24B TOBU 1M40G         | Version   |
| Order No.  | <a href="#">1902980000</a> | HDC enclosures, Installation size: 8, Protection degree: IP65, in   |
| GTIN (EAN) | 4032248585274              | plugged condition, Cable entry from top, Plug housing, Side-locking |
| Qty.       | 1 ST                       | clamp on lower side, Standard, Size of cable entries: M 40          |

**HDC 24B SBU 1M25G N**

**Weidmüller Interface GmbH & Co. KG**  
 Klingenbergstraße 26  
 D-32758 Detmold  
 Germany

www.weidmueller.com

**Accessories**

**XXL plug housing, cable entry sideways**



The special die-cast alloy and the multi-layered surface sealing provide complete protection for the HDC housings.  
 The cleverly designed interlock system is manufactured from stainless steel. This guarantees a long lifespan with high resistance to corrosion and impact.  
 The housing interlock system provides integrated safety. Our unique, patented spring system provides the housing interlock with a secure grip and prevents accidental opening.  
 The laser marking allows for easy and quick identification. Each housing is permanently labelled with a laser marking so that each product can be quickly designated and positioned.  
 Weidmüller RockStar® IP 65 / NEMA Type 4X housings - your first choice for industrial housings with IP 65 protection.

**General ordering data**

|            |                            |         |  |
|------------|----------------------------|---------|--|
| Type       | HDC 64D TSBU 1M50G         | Version |  |
| Order No.  | <a href="#">1111130000</a> |         | HDC enclosures, Installation size: 8, Protection degree: IP65, in    |
| GTIN (EAN) | 4032248967711              |         | plugged condition, Cable entry from side, Plug housing, Side-locking |
| Qty.       | 1 ST                       |         | clamp on lower side, high, Size of cable entries: M 50               |

**Hood, Cable Entry sideways**



The special die-cast alloy and the multi-layered surface sealing provide complete protection for the HDC housings.  
 The cleverly designed interlock system is manufactured from stainless steel. This guarantees a long lifespan with high resistance to corrosion and impact.  
 The housing interlock system provides integrated safety. Our unique, patented spring system provides the housing interlock with a secure grip and prevents accidental opening.  
 The laser marking allows for easy and quick identification. Each housing is permanently labelled with a laser marking so that each product can be quickly designated and positioned.  
 Weidmüller RockStar® IP 65 / NEMA Type 4X housings - your first choice for industrial housings with IP 65 protection.

**General ordering data**

|            |                            |         |  |
|------------|----------------------------|---------|--|
| Type       | HDC 24B TSBU 1PG21G        | Version |  |
| Order No.  | <a href="#">1661230000</a> |         | HDC enclosures, Installation size: 8, Protection degree: IP65, in    |
| GTIN (EAN) | 4008190417789              |         | plugged condition, Cable entry from side, Plug housing, Side-locking |
| Qty.       | 1 ST                       |         | clamp on lower side, Standard, Size of cable entries: PG 21          |
| Type       | HDC 24B TSBU 1PG29G        | Version |  |
| Order No.  | <a href="#">1661240000</a> |         | HDC enclosures, Installation size: 8, Protection degree: IP65, in    |
| GTIN (EAN) | 4008190417796              |         | plugged condition, Cable entry from side, Plug housing, Side-locking |
| Qty.       | 1 ST                       |         | clamp on lower side, Standard, Size of cable entries: PG 29          |

## HDC 24B SBU 1M25G N

**Weidmüller Interface GmbH & Co. KG**  
 Klingenbergstraße 26  
 D-32758 Detmold  
 Germany

www.weidmueller.com

## Accessories

|            |                            |  |
|------------|----------------------------|--|
| Type       | HDC 64D TSBU 1PG21G        | Version  |
| Order No.  | <a href="#">1661300000</a> | HDC enclosures, Installation size: 8, Protection degree: IP65, in    |
| GTIN (EAN) | 4008190417857              | plugged condition, Cable entry from side, Plug housing, Side-locking |
| Qty.       | 1 ST                       | clamp on lower side, high, Size of cable entries: PG 21              |
| Type       | HDC 64D TSBU 1PG29G        | Version  |
| Order No.  | <a href="#">1661320000</a> | HDC enclosures, Installation size: 8, Protection degree: IP65, in    |
| GTIN (EAN) | 4008190417871              | plugged condition, Cable entry from side, Plug housing, Side-locking |
| Qty.       | 1 ST                       | clamp on lower side, high, Size of cable entries: PG 29              |
| Type       | HDC 64D TSBU 1M32G         | Version  |
| Order No.  | <a href="#">1786770000</a> | HDC enclosures, Installation size: 8, Protection degree: IP65, in    |
| GTIN (EAN) | 4032248204014              | plugged condition, Cable entry from side, Plug housing, Side-locking |
| Qty.       | 1 ST                       | clamp on lower side, high, Size of cable entries: M 32               |
| Type       | HDC 64D TSBU 1M25G         | Version  |
| Order No.  | <a href="#">1786780000</a> | HDC enclosures, Installation size: 8, Protection degree: IP65, in    |
| GTIN (EAN) | 4032248204021              | plugged condition, Cable entry from side, Plug housing, Side-locking |
| Qty.       | 1 ST                       | clamp on lower side, high, Size of cable entries: M 25               |
| Type       | HDC 24B TSBU 1M32G         | Version  |
| Order No.  | <a href="#">1787750000</a> | HDC enclosures, Installation size: 8, Protection degree: IP65, in    |
| GTIN (EAN) | 4032248205097              | plugged condition, Cable entry from side, Plug housing, Side-locking |
| Qty.       | 1 ST                       | clamp on lower side, Standard, Size of cable entries: M 32           |
| Type       | HDC 24B TSBU 1M25G         | Version  |
| Order No.  | <a href="#">1787760000</a> | HDC enclosures, Installation size: 8, Protection degree: IP65, in    |
| GTIN (EAN) | 4032248205103              | plugged condition, Cable entry from side, Plug housing, Side-locking |
| Qty.       | 1 ST                       | clamp on lower side, Standard, Size of cable entries: M 25           |
| Type       | HDC 64D TSBU 1M40G         | Version  |
| Order No.  | <a href="#">1809630000</a> | HDC enclosures, Installation size: 8, Protection degree: IP65, in    |
| GTIN (EAN) | 4032248284986              | plugged condition, Cable entry from side, Plug housing, Side-locking |
| Qty.       | 1 ST                       | clamp on lower side, high, Size of cable entries: M 40               |
| Type       | HDC 24B TSBU 1M40G         | Version  |
| Order No.  | <a href="#">1902480000</a> | HDC enclosures, Installation size: 8, Protection degree: IP65, in    |
| GTIN (EAN) | 4032248592944              | plugged condition, Cable entry from side, Plug housing, Side-locking |
| Qty.       | 1 ST                       | clamp on lower side, Standard, Size of cable entries: M 40           |

## Cover



The special die-cast alloy and the multi-layered surface sealing provide complete protection for the HDC housings.

The cleverly designed interlock system is manufactured from stainless steel. This guarantees a long lifespan with high resistance to corrosion and impact.

The housing interlock system provides integrated safety. Our unique, patented spring system provides the housing interlock with a secure grip and prevents accidental opening.

The laser marking allows for easy and quick identification. Each housing is permanently labelled with a laser marking so that each product can be quickly designated and positioned.

Weidmüller RockStar® IP 65 / NEMA Type 4X housings - your first choice for industrial housings with IP 65 protection.

## HDC 24B SBU 1M25G N

**Weidmüller Interface GmbH & Co. KG**  
Klingenbergstraße 26  
D-32758 Detmold  
Germany

[www.weidmueller.com](http://www.weidmueller.com)

## Accessories

### General ordering data

|            |                            |   |  |
|------------|----------------------------|---|--|
| Type       | HDC 24B DODQ 4B0           | Version   |  |
| Order No.  | <a href="#">1665630000</a> | HDC enclosures, Installation size: 8, Protection degree: IP65, in |  |
| GTIN (EAN) | 4008190422653              | plugged condition, Cover for lower part of housing, Side-locking  |  |
| Qty.       | 1 ST                       | clamp on lower side, Standard, Size of cable entries: none        |  |

## HDC 24B SBU 1M25G N

**Weidmüller Interface GmbH & Co. KG**  
 Klingenbergstraße 26  
 D-32758 Detmold  
 Germany

www.weidmueller.com

## Counterpart

## Bulkhead housing



The special die-cast alloy and the multi-layered surface sealing provide complete protection for the HDC housings.

The cleverly designed interlock system is manufactured from stainless steel. This guarantees a long lifespan with high resistance to corrosion and impact.

The housing interlock system provides integrated safety. Our unique, patented spring system provides the housing interlock with a secure grip and prevents accidental opening.

The laser marking allows for easy and quick identification. Each housing is permanently labelled with a laser marking so that each product can be quickly designated and positioned.

Weidmüller RockStar® IP 65 / NEMA Type 4X housings - your first choice for industrial housings with IP 65 protection.

## General ordering data

|            |                            |  |
|------------|----------------------------|--|
| Type       | HDC 24B ABU                | Version  |
| Order No.  | <a href="#">1212400000</a> | HDC enclosures, Installation size: 8, Protection degree: IP65, in plugged condition, Bulkhead housing, Side-locking clamp on lower side, Standard, Size of cable entries: none |
| GTIN (EAN) | 4008190083939              |  |
| Qty.       | 1 ST                       |  |
| Type       | HDC 24B ABU N              | Version  |
| Order No.  | <a href="#">2488600000</a> | HDC enclosures, Installation size: 8, Protection degree: IP65, in plugged condition, Bulkhead housing, Side-locking clamp on lower side, Standard, Size of cable entries: none |
| GTIN (EAN) | 4050118541533              |  |
| Qty.       | 1 ST                       |  |

## Coupling hood



The special die-cast alloy and the multi-layered surface sealing provide complete protection for the HDC housings.

The cleverly designed interlock system is manufactured from stainless steel. This guarantees a long lifespan with high resistance to corrosion and impact.

The housing interlock system provides integrated safety. Our unique, patented spring system provides the housing interlock with a secure grip and prevents accidental opening.

The laser marking allows for easy and quick identification. Each housing is permanently labelled with a laser marking so that each product can be quickly designated and positioned.

Weidmüller RockStar® IP 65 / NEMA Type 4X housings - your first choice for industrial housings with IP 65 protection.

## General ordering data

|            |                            |  |
|------------|----------------------------|--|
| Type       | HDC 24B KBU 1M25G          | Version  |
| Order No.  | <a href="#">1787920000</a> | HDC enclosures, Installation size: 8, Protection degree: IP65, in plugged condition, Coupling housing, Side-locking clamp on lower side, Standard, Size of cable entries: M 25 |
| GTIN (EAN) | 4032248205363              |  |
| Qty.       | 1 ST                       |  |

## HDC 24B SBU 1M25G N

**Weidmüller Interface GmbH & Co. KG**  
 Klingenbergstraße 26  
 D-32758 Detmold  
 Germany

www.weidmueller.com

## Counterpart

|            |                            |   |
|------------|----------------------------|---|
| Type       | HDC 24B KBU 1PG21G         | Version   |
| Order No.  | <a href="#">1661720000</a> | HDC enclosures, Installation size: 8, Protection degree: IP65, in plugged condition, Coupling housing, Side-locking clamp on lower side, Standard, Size of cable entries: PG 21 |
| GTIN (EAN) | 4008190418274              |   |
| Qty.       | 1 ST                       |   |
| Type       | HDC 24B KBU 1PG29G         | Version   |
| Order No.  | <a href="#">1661730000</a> | HDC enclosures, Installation size: 8, Protection degree: IP65, in plugged condition, Coupling housing, Side-locking clamp on lower side, Standard, Size of cable entries: PG 29 |
| GTIN (EAN) | 4008190418281              |   |
| Qty.       | 1 ST                       |   |
| Type       | HDC 64D KBU 1M32G          | Version   |
| Order No.  | <a href="#">1786960000</a> | HDC enclosures, Installation size: 8, Protection degree: IP65, in plugged condition, Coupling housing, Side-locking clamp on lower side, high, Size of cable entries: M 32      |
| GTIN (EAN) | 4032248204205              |   |
| Qty.       | 1 ST                       |   |
| Type       | HDC 64D KBU 1PG29G         | Version   |
| Order No.  | <a href="#">1661810000</a> | HDC enclosures, Installation size: 8, Protection degree: IP65, in plugged condition, Coupling housing, Side-locking clamp on lower side, high, Size of cable entries: PG 29     |
| GTIN (EAN) | 4008190418359              |   |
| Qty.       | 1 ST                       |   |

## Base housing



The special die-cast alloy and the multi-layered surface sealing provide complete protection for the HDC housings.

The cleverly designed interlock system is manufactured from stainless steel. This guarantees a long lifespan with high resistance to corrosion and impact.

The housing interlock system provides integrated safety. Our unique, patented spring system provides the housing interlock with a secure grip and prevents accidental opening.

The laser marking allows for easy and quick identification. Each housing is permanently labelled with a laser marking so that each product can be quickly designated and positioned.

Weidmüller RockStar® IP 65 / NEMA Type 4X housings - your first choice for industrial housings with IP 65 protection.

## General ordering data

|            |                            |   |
|------------|----------------------------|---|
| Type       | HDC 24B SBU 1M25G          | Version   |
| Order No.  | <a href="#">1901150000</a> | HDC enclosures, Installation size: 8, Protection degree: IP65, in plugged condition, Base housing, Side-locking clamp on lower side, Standard, Size of cable entries: M 25  |
| GTIN (EAN) | 4032248521258              |   |
| Qty.       | 1 ST                       |   |
| Type       | HDC 24B SBU 1M25G N        | Version   |
| Order No.  | <a href="#">2560960000</a> | HDC enclosures, Installation size: 8, Protection degree: IP65, in plugged condition, Base housing, Side-locking clamp on lower side, Standard, Size of cable entries: M 25  |
| GTIN (EAN) | 4050118673227              |   |
| Qty.       | 1 ST                       |   |
| Type       | HDC 24B SBU 1PG21G         | Version   |
| Order No.  | <a href="#">1661510000</a> | HDC enclosures, Installation size: 8, Protection degree: IP65, in plugged condition, Base housing, Side-locking clamp on lower side, Standard, Size of cable entries: PG 21 |
| GTIN (EAN) | 4008190418069              |   |
| Qty.       | 1 ST                       |   |
| Type       | HDC 24B SBU 1PG21G N       | Version   |
| Order No.  | <a href="#">2560750000</a> | HDC enclosures, Installation size: 8, Protection degree: IP65, in plugged condition, Base housing, Side-locking clamp on lower side, Standard, Size of cable entries: M 25  |
| GTIN (EAN) | 4050118676747              |   |
| Qty.       | 1 ST                       |   |

## HDC 24B SBU 1M25G N

**Weidmüller Interface GmbH & Co. KG**  
 Klingenbergstraße 26  
 D-32758 Detmold  
 Germany

www.weidmueller.com

### Counterpart

|            |                            |  |
|------------|----------------------------|--|
| Type       | HDC 24B SBU 2M25G          | Version  |
| Order No.  | <a href="#">1787870000</a> | HDC enclosures, Installation size: 8, Protection degree: IP65, in  |
| GTIN (EAN) | 4032248205318              | plugged condition, Base housing, Side-locking clamp on lower side, |
| Qty.       | 1 ST                       | Standard, Size of cable entries: M 25                              |
| Type       | HDC 24B SBU 2PG21G         | Version  |
| Order No.  | <a href="#">1661520000</a> | HDC enclosures, Installation size: 8, Protection degree: IP65, in  |
| GTIN (EAN) | 4008190418076              | plugged condition, Base housing, Side-locking clamp on lower side, |
| Qty.       | 1 ST                       | Standard, Size of cable entries: PG 21                             |
| Type       | HDC 24B SBU 2M25G N        | Version  |
| Order No.  | <a href="#">2560970000</a> | HDC enclosures, Installation size: 8, Protection degree: IP65, in  |
| GTIN (EAN) | 4050118676730              | plugged condition, Base housing, Side-locking clamp on lower side, |
| Qty.       | 1 ST                       | Standard, Size of cable entries: M 25                              |
| Type       | HDC 64D SBU 1M25G          | Version  |
| Order No.  | <a href="#">1904340000</a> | HDC enclosures, Installation size: 8, Protection degree: IP65, in  |
| GTIN (EAN) | 4032248585601              | plugged condition, Base housing, Side-locking clamp on lower side, |
| Qty.       | 1 ST                       | high, Size of cable entries: M 25                                  |
| Type       | HDC 64D SBU 1M32G          | Version  |
| Order No.  | <a href="#">1904350000</a> | HDC enclosures, Installation size: 8, Protection degree: IP65, in  |
| GTIN (EAN) | 4032248585298              | plugged condition, Base housing, Side-locking clamp on lower side, |
| Qty.       | 1 ST                       | high, Size of cable entries: M 32                                  |
| Type       | HDC 64D SBU 1M32G N        | Version  |
| Order No.  | <a href="#">2561050000</a> | HDC enclosures, Installation size: 8, Protection degree: IP65, in  |
| GTIN (EAN) | 4050118680195              | plugged condition, Base housing, Side-locking clamp on lower side, |
| Qty.       | 1 ST                       | high, Size of cable entries: M 32                                  |
| Type       | HDC 64D SBU 2M25G          | Version  |
| Order No.  | <a href="#">1786890000</a> | HDC enclosures, Installation size: 8, Protection degree: IP65, in  |
| GTIN (EAN) | 4032248204137              | plugged condition, Base housing, Side-locking clamp on lower side, |
| Qty.       | 1 ST                       | high, Size of cable entries: M 25                                  |
| Type       | HDC 64D SBU 2M25G N        | Version  |
| Order No.  | <a href="#">2561060000</a> | HDC enclosures, Installation size: 8, Protection degree: IP65, in  |
| GTIN (EAN) | 4050118680508              | plugged condition, Base housing, Side-locking clamp on lower side, |
| Qty.       | 1 ST                       | high, Size of cable entries: M 32                                  |
| Type       | HDC 64D SBU 2M32G          | Version  |
| Order No.  | <a href="#">1786880000</a> | HDC enclosures, Installation size: 8, Protection degree: IP65, in  |
| GTIN (EAN) | 4032248204120              | plugged condition, Base housing, Side-locking clamp on lower side, |
| Qty.       | 1 ST                       | high, Size of cable entries: M 32                                  |
| Type       | HDC 64D SBU 2M32G N        | Version  |
| Order No.  | <a href="#">2550540000</a> | HDC enclosures, Installation size: 8, Protection degree: IP65, in  |
| GTIN (EAN) | 4064675005087              | plugged condition, Base housing, Side-locking clamp on lower side, |
| Qty.       | 1 ST                       | high, Size of cable entries: M 32                                  |
| Type       | HDC 64D SBU 2PG21G         | Version  |
| Order No.  | <a href="#">1661590000</a> | HDC enclosures, Installation size: 8, Protection degree: IP65, in  |
| GTIN (EAN) | 4008190418144              | plugged condition, Base housing, Side-locking clamp on lower side, |
| Qty.       | 1 ST                       | high, Size of cable entries: PG 21                                 |
| Type       | HDC 64D SBU 2PG29G         | Version  |
| Order No.  | <a href="#">1661630000</a> | HDC enclosures, Installation size: 8, Protection degree: IP65, in  |
| GTIN (EAN) | 4008190418182              | plugged condition, Base housing, Side-locking clamp on lower side, |
| Qty.       | 1 ST                       | high, Size of cable entries: PG 29                                 |
| Type       | HDC 64D SBU 2PG29G N       | Version  |
| Order No.  | <a href="#">2560790000</a> | HDC enclosures, Installation size: 8, Protection degree: IP65, in  |
| GTIN (EAN) | 4050118894103              | plugged condition, Base housing, Side-locking clamp on lower side, |
| Qty.       | 1 ST                       | high, Size of cable entries: M 32                                  |