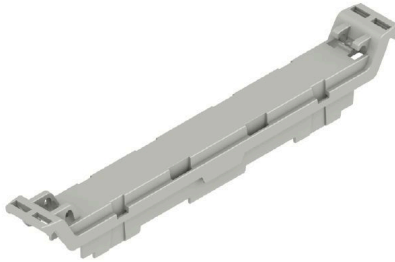
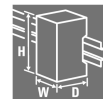


CH20M12 F AGY 3747**Weidmüller Interface GmbH & Co. KG**Klingenbergstraße 26
D-32758 Detmold
Germanywww.weidmueller.com**IP20**

The front element of the CH20M housing offers you numerous options for individual design and functionality. You can choose between various printing methods such as pad printing and laser engraving to implement your designs precisely and attractively.

Laser cut-outs for electronic components are also possible. Markers can also be used. The front element can be equipped with or without a hinged lid.

General ordering data

Version	Front element, OMNIMATE Housing - series CH20M Agate grey, Front element, including preparation for flip cover, Width: 12.5 mm
Order No.	2554760000
Type	CH20M12 F AGY 3747
GTIN (EAN)	4050118564778
Qty.	70 items

CH20M12 F AGY 3747

Weidmüller Interface GmbH & Co. KG
 Klingenbergstraße 26
 D-32758 Detmold
 Germany

www.weidmueller.com

Technical data

Approvals

ROHS	Conform
------	---------

Dimensions and weights

Depth	15.5 mm	Depth (inches)	0.6102 inch
Height	100.3 mm	Height (inches)	3.9488 inch
Width	12.5 mm	Width (inches)	0.4921 inch
Net weight	4.15 g		

Temperatures

Ambient temperature	-25 °C...85 °C	Operating temperature range	-40...120 °C
Humidity	5 - 93% rel. humidity, Tu = 40°C, no condensation		

Environmental Product Compliance

RoHS Compliance Status	Compliant without exemption
REACH SVHC	No SVHC above 0.1 wt%

Material data

UL 94 flammability rating	V-0	Insulating material	PA 66 GF 30
Insulating material group	I	Surface finish	untreated
Basic material	Plastic	Comparative Tracking Index (CTI)	600 ≤ CTI

General data

Colour	Agate grey	Protection degree	IP20 in installed state
Colour chart (similar)	RAL 7038	Information regarding whole assembly, see referenced articles	CH20M12 B BK/OR 2010
Encapsulation option	No		

Component properties

Flip cover mountable	Yes	Marker integrateable	No
----------------------	-----	----------------------	----

Individualization options

Customer specific cutouts possible	Yes	Customer specific labelling possible	Yes
Customer specific order process	See guideline under downloads	Alternative colours	More on request
Processing possibilities	Laser processing, Milling		

Classifications

ETIM 7.0	EC001031	ETIM 8.0	EC001031
ETIM 9.0	EC001031	ETIM 10.0	EC001031
ECLASS 11.0	27-18-27-92	ECLASS 12.0	27-18-27-92
ECLASS 13.0	27-19-06-03	ECLASS 14.0	27-19-06-03
ECLASS 15.0	27-19-06-03		

Drawings

Dimensioned drawing



CH20M12 F AGY 3747**Weidmüller Interface GmbH & Co. KG**

Klingenbergstraße 26

D-32758 Detmold

Germany

www.weidmueller.com**Counterpart****CH20M12 C - Flip cover**

The Flip cover of the CH20M housing offers practical functions that support your application. It can be sealed, which ensures additional security and protection for your contents. You also have the option of printing on the cover using pad printing to clearly display important information or logos.

In addition, markers can be used to apply specific instructions or markings directly on the cover.

General ordering data

Type	CH20M12 C BK 1819	Version
Order No.	1104240000	Modular housing, OMNIMATE Housing - series CH20M black,
GTIN (EAN)	4032248878833	Transparent, Flip cover, Width: 12.5 mm
Qty.	70 ST	
Type	CH20M12 C TP 8089	Version
Order No.	1104250000	Modular housing, OMNIMATE Housing - series CH20M Transparent,
GTIN (EAN)	4032248878581	Flip cover, Width: 12.5 mm
Qty.	70 ST	