

**CH20M22 S PPSC AGY 3747**

**Weidmüller Interface GmbH & Co. KG**  
Klingenbergstraße 26  
D-32758 Detmold  
Germany

[www.weidmueller.com](http://www.weidmueller.com)

**Product image**

The side element of the CH20M housing offers you the option of an individual structure that can be flexibly adapted to your needs. A particularly practical advantage is that slots that are not required can simply be closed with covers. This not only ensures a clean and tidy appearance, but also protects against dust and other environmental influences. Take advantage of the versatility of the CH20M housing to design your projects efficiently and according to your ideas!

**General ordering data**

|            |  |
|------------|--|
| Version    | Side element, OMNIMATE Housing - series CH20M Agate grey, Side element, Width: 22.5 mm |
| Order No.  | <a href="#">2554710000</a>   |
| Type       | CH20M22 S PPSC AGY 3747  |
| GTIN (EAN) | 4050118565010  |
| Qty.       | 10 items   |

## CH20M22 S PPSC AGY 3747

**Weidmüller Interface GmbH & Co. KG**  
 Klingenbergstraße 26  
 D-32758 Detmold  
 Germany

www.weidmueller.com

## Technical data

### Approvals

|      |         |
|------|---------|
| ROHS | Conform |
|------|---------|

### Dimensions and weights

|            |          |                 |             |
|------------|----------|-----------------|-------------|
| Depth      | 105.5 mm | Depth (inches)  | 4.1535 inch |
| Height     | 22.8 mm  | Height (inches) | 0.8976 inch |
| Width      | 22.5 mm  | Width (inches)  | 0.8858 inch |
| Net weight | 8.8 g    |                 |             |

### Temperatures

|                     |   |                             |              |
|---------------------|---|-----------------------------|--------------|
| Ambient temperature | -25 °C...85 °C                                    | Operating temperature range | -40...120 °C |
| Humidity            | 5 - 93% rel. humidity, Tu = 40°C, no condensation |                             |              |

### Environmental Product Compliance

|                        |                             |
|------------------------|-----------------------------|
| RoHS Compliance Status | Compliant without exemption |
| REACH SVHC             | No SVHC above 0.1 wt%       |

### Material data

|                           |         |                                  |             |
|---------------------------|---------|----------------------------------|-------------|
| UL 94 flammability rating | V-0     | Insulating material              | PA 66 GF 30 |
| Insulating material group | I       | Surface finish                   | untreated   |
| Basic material            | Plastic | Comparative Tracking Index (CTI) | 600 ≤ CTI   |

### General data

|                        |            |   |                                      |
|------------------------|------------|---|--------------------------------------|
| Colour                 | Agate grey | Protection degree   | IP20 in installed state              |
| Colour chart (similar) | RAL 7038   | Information regarding whole assembly, see referenced articles | <a href="#">CH20M22 B BK/OR 2010</a> |
| Encapsulation option   | No         |   |                                      |

### Component properties

|   |   |                                  |   |
|---|---|----------------------------------|---|
| Cut out as preparation for functional portNo integrated |   | Number of poles, max.            | 8 |
| Number of ventilation openings                          | 1 | Number of slots for female plugs | 2 |
| Number of connection levels                             | 2 |                                  |   |

### Classifications

|             |             |             |             |
|-------------|-------------|-------------|-------------|
| ETIM 8.0    | EC001031    | ETIM 9.0    | EC001031    |
| ETIM 10.0   | EC001031    | ECLASS 14.0 | 27-19-06-02 |
| ECLASS 15.0 | 27-19-06-02 |             |             |

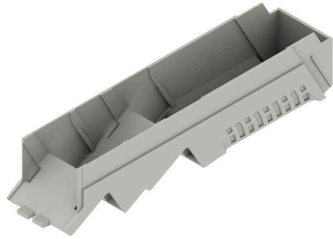
**CH20M22 S PPSC AGY 3747**

**Weidmüller Interface GmbH & Co. KG**  
Klingenbergstraße 26  
D-32758 Detmold  
Germany

[www.weidmueller.com](http://www.weidmueller.com)

**Drawings**

**Product image**



**Product image**



**Dimensioned drawing**



## CH20M22 S PPSC AGY 3747

**Weidmüller Interface GmbH & Co. KG**  
 Klingenbergstraße 26  
 D-32758 Detmold  
 Germany

## Accessories

www.weidmueller.com

### CH20M AD SHL 5.00/04 - Side element cover for CH20M22, CH20M45, CH20M67



Future-proof solutions for industrial electronics for mounting in the control cabinet

Electronichousings are crucial for the integration of electronic assemblies in the control cabinet. They protect sensitive components and ensure reliable connections. Thanks to high-quality materials, they offer long-term solutions for industrial applications.

Your advantages:

**Flexibility:** Scalable solutions for different requirements

**Safety:** Robust design to protect your electronics

**Efficiency:** Simple installation and optimized connection technology

Housing solutions for every application:

Our portfolio includes modular housings (e.g. CH20M), small housings and profile housings designed for control, signal conversion and safety applications. These housings offer customizable designs, easy mounting and high connection capacity.

Customization:

In addition to standard solutions, we offer customization in design, color and printing. The Weidmüller Configurator enables individual design.

Our service:

We offer expert advice and technical support for your projects. In the download area you will find CAD data, data sheets and installation instructions for efficient integration.

### General ordering data

|            |                            |  |
|------------|----------------------------|--|
| Type       | CH20M AD SHL 5.00/04 AG... | Version  |
| Order No.  | <a href="#">1472830000</a> | Hood, OMNIMATE Housing - series CH20M Agate grey, Side element |
| GTIN (EAN) | 4050118279429              | cover, Width: 22.5 mm  |
| Qty.       | 50 ST                      |  |
| Type       | CH20M AD SHL 5.00/04 BK... | Version  |
| Order No.  | <a href="#">1221310000</a> | Hood, OMNIMATE Housing - series CH20M black, Side element      |
| GTIN (EAN) | 4050118004830              | cover, Width: 22.5 mm  |
| Qty.       | 50 ST                      |  |