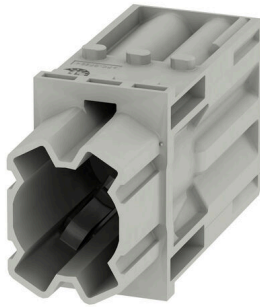


## HDC MHP 200 MC

**Weidmüller Interface GmbH & Co. KG**  
Klingenbergstraße 26  
D-32758 Detmold  
Germany

[www.weidmueller.com](http://www.weidmueller.com)



### Flexible

The four module sizes make for individual plug solutions that save a huge amount of space. The smaller pitch translates into an optimised design too.

### General ordering data

Version	Power module, 1000 V, 200 A, Number of poles: 1, Crimp connection, Male, Required plug-in slots: 1.5
Order No.	<a href="#">2548900000</a>
Type	HDC MHP 200 MC
GTIN (EAN)	4050118619287
Qty.	1 items

## HDC MHP 200 MC

Weidmüller Interface GmbH & Co. KG  
Klingenbergstraße 26  
D-32758 Detmold  
Germany

www.weidmueller.com

## Technical data

## Approvals

Approvals



ROHS Conform

UL File Number Search [UL Website](#)

Certificate No. (cURus) E92202

## Dimensions and weights

Depth	34 mm	Depth (inches)	1.3386 inch
Height	60.3 mm	Height (inches)	2.374 inch
Width	21.85 mm	Width (inches)	0.8602 inch
Net weight	12 g		

## Temperatures

Limit temperature -40 °C ... 125 °C

## Environmental Product Compliance

RoHS Compliance Status	Compliant without exemption
REACH SVHC	Potassium perfluorobutane sulfonate 29420-49-3
SCIP	1609748e-c278-4c9b-b3d1-e6215d2988cd

## General data

Number of poles	1	UL 94 flammability rating	V-0
Insulation resistance	10 <sup>12</sup> Ω	Plugging cycles	≥ 500
Type	Male	Surge voltage category	III
Pollution severity	3	Basic material	Polycarbonate, glass fibre reinforced
Series	ModuPlug	Rated voltage (DIN EN 61984)	1000 V
Rated voltage according to UL/CSA	600 V	Rated impulse voltage (DIN EN 61984)	8 kV
Rated current (DIN EN 61984)	200 A	Required plug-in slots	1.5

## PE connection data

Connection type PE	Screw connection via module frame
--------------------	-----------------------------------

## Version

Stripping length, rated connection	19 mm	Type of connection	Crimp connection
Conductor cross-section, max.	70 mm <sup>2</sup>	Conductor cross-section, min.	25 mm <sup>2</sup>

## Classifications

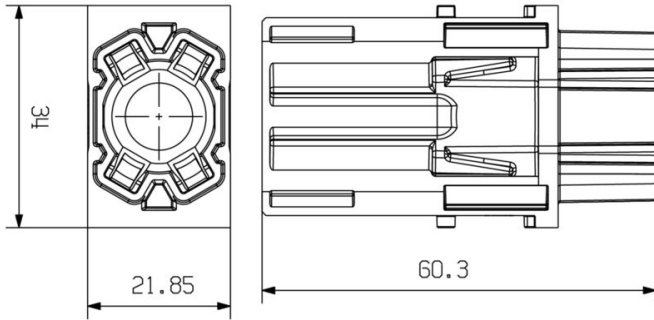
ETIM 8.0	EC000438	ETIM 9.0	EC000438
ETIM 10.0	EC000438	ECLASS 14.0	27-44-02-17
ECLASS 15.0	27-44-02-17		

HDC MHP 200 MC

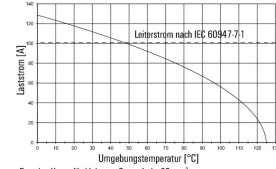
Weidmüller Interface GmbH & Co. KG  
 Klingenbergstraße 26  
 D-32758 Detmold  
 Germany

Drawings

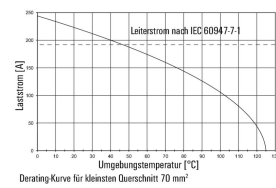
www.weidmueller.com



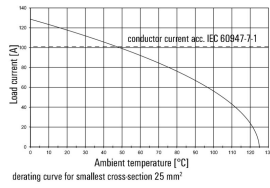
HP 200 mit H07V-K25 / IP65-Gehäuse / 4-polig



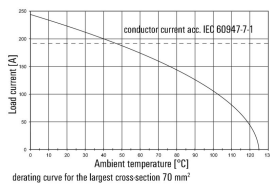
HP 200 / IP65-Gehäuse / 4 Pole



HP 200 with H07V-K25 / IP65 housing / 4 poles



HP 200 / IP65 housing / 4 poles



## HDC MHP 200 MC

**Weidmüller Interface GmbH & Co. KG**  
 Klingenbergstraße 26  
 D-32758 Detmold  
 Germany

[www.weidmueller.com](http://www.weidmueller.com)

## Accessories

## 200 A crimp contacts



Crimps provide a electrical and mechanical connection between wire and contact that is both secure and reliable. The optimal crimp connection is gas-tight and corrosion-resistant.

## General ordering data

Type	HDC MHP200 M 25	Version
Order No.	<a href="#">2514860000</a>	Male, silver, 25 - 25 mm <sup>2</sup>
GTIN (EAN)	4050118528503	
Qty.	10 ST	
Type	HDC MHP200 M 35	Version
Order No.	<a href="#">2514870000</a>	Male, silver, 35 - 35 mm <sup>2</sup>
GTIN (EAN)	4050118528510	
Qty.	10 ST	
Type	HDC MHP200 M 50	Version
Order No.	<a href="#">2514880000</a>	Male, silver, 50 - 50 mm <sup>2</sup>
GTIN (EAN)	4050118528527	
Qty.	10 ST	
Type	HDC MHP200 M 70	Version
Order No.	<a href="#">2514890000</a>	Male, silver, 70 - 70 mm <sup>2</sup>
GTIN (EAN)	4050118528534	
Qty.	10 ST	

## Miscellaneous



In addition to heavy-duty connectors, RockStar® includes the appropriate accessories for effective, functional and safe system cabling; e.g. coding systems, shield clamps, cover plates and replacement seals

## General ordering data

Type	HDC MHP200 REMOVAL TOOL	Version
Order No.	<a href="#">2617240000</a>	
GTIN (EAN)	4050118705430	
Qty.	1 ST	

## HDC MHP 200 MC

**Weidmüller Interface GmbH & Co. KG**  
Klingenbergstraße 26  
D-32758 Detmold  
Germany

[www.weidmueller.com](http://www.weidmueller.com)

## Counterpart

### Electrical modules



#### Flexible

The four module sizes make for individual plug solutions that save a huge amount of space. The smaller pitch translates into an optimised design too.

### General ordering data

Type	HDC MHP 200 FC	Version	
Order No.	<a href="#">2549260000</a>	Power module, 1000 V, 200 A, Number of poles: 1, Crimp connection, Female, Required plug-in slots: 1.5	
GTIN (EAN)	4050118558685		
Qty.	1 ST		