

## HDC 16B ABU EMC

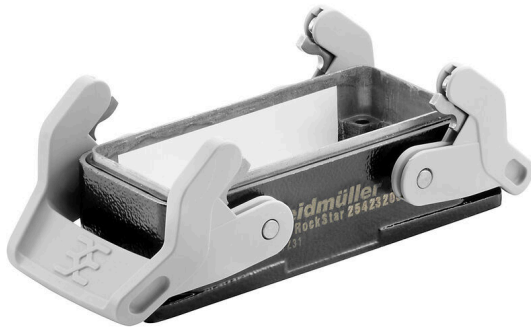
**Weidmüller Interface GmbH & Co. KG**

Klingenbergstraße 26

D-32758 Detmold

Germany

[www.weidmueller.com](http://www.weidmueller.com)



The new Weidmüller RockStar® IP65 EMV enclosures are ideally suited for use in the harshest environmental conditions and provide protection against electromagnetic interference. A heavy-duty connector consists of a connector insert and its protective housing. The new plastic straps are easy to lock and can be replaced at any time. All Weidmüller RockStar® enclosures are made of high quality die-cast aluminium. This makes them impact- and corrosion-resistant, yet compact and lightweight.

### General ordering data

Version	HDC enclosures, Installation size: 6, Protection degree: IP65, in plugged condition, Bulkhead housing, Side-locking clamp on lower side, Side-locking clamp replaceable, , Size of cable entries: none
Order No.	<a href="#">2542320000</a>
Type	HDC 16B ABU EMC
GTIN (EAN)	4050118648799
Qty.	1 items

**HDC 16B ABU EMC**

**Weidmüller Interface GmbH & Co. KG**  
 Klingenbergstraße 26  
 D-32758 Detmold  
 Germany

www.weidmueller.com

**Technical data**

**Approvals**

Approvals



UL File Number Search [UL Website](#)  
 Certificate No. (cULus) E92202

**Dimensions and weights**

Depth	113 mm	Depth (inches)	4.4488 inch
Height	30 mm	Height (inches)	1.1811 inch
Width	45 mm	Width (inches)	1.7716 inch
Net weight	128.6 g		

**Temperatures**

Limit temperature -40 °C ... 125 °C

**Environmental Product Compliance**

RoHS Compliance Status	Compliant without exemption		
REACH SVHC	No SVHC above 0.1 wt%		
Chemical resistance	Substance	Hydraulic oil	
	Chemical resistance	Resistant	
	Substance	Petrol	
	Chemical resistance	Resistant	
	Substance	UV	
	Chemical resistance	Resistant	
	Substance	Ozone	
Chemical resistance	Resistant		

**Dimensions**

Cable entry No

**General data**

UL 94 flammability rating	V-0	Surface finish	Powder coating
Protection degree	IP65, in plugged condition		

**Version**

Size of cable entries	none	Top part/bottom part/lid	lower part
Cover	without cover	Number of cable entry sideways	0
Design of housing	Bulkhead housing	Design of locking system	Side-locking clamp on lower side, Side-locking clamp replaceable
Installation size	6	Cable entry	No
Type	Bulkhead (feed-through)	Clamp version	Side-locking clamp
Sealing	FPM	Colour (RAL)	RAL 9011
BG	6	Suitable for ModuPlug®	Yes

**HDC 16B ABU EMC**

**Weidmüller Interface GmbH & Co. KG**  
Klingenbergstraße 26  
D-32758 Detmold  
Germany

[www.weidmueller.com](http://www.weidmueller.com)

**Technical data**

**Classifications**

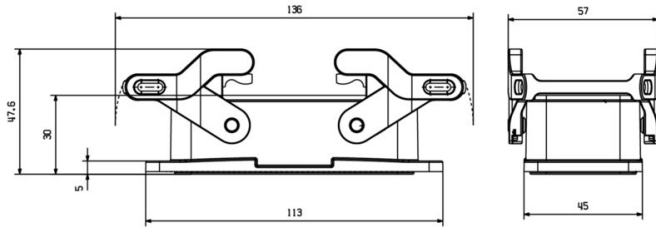
ETIM 8.0	EC000437	ETIM 9.0	EC000437
ETIM 10.0	EC000437	ECLASS 14.0	27-44-02-02
ECLASS 15.0	27-44-02-02		

**HDC 16B ABU EMC**

**Weidmüller Interface GmbH & Co. KG**  
Klingenbergstraße 26  
D-32758 Detmold  
Germany

**Drawings**

[www.weidmueller.com](http://www.weidmueller.com)



**HDC 16B ABU EMC**

**Weidmüller Interface GmbH & Co. KG**  
 Klingenbergstraße 26  
 D-32758 Detmold  
 Germany

www.weidmueller.com

**Counterpart**

**Size 6 (16B/40D)**



The new Weidmüller RockStar® IP65 EMV enclosures are ideally suited for use in the harshest environmental conditions and provide protection against electromagnetic interference. A heavy-duty connector consists of a connector insert and its protective housing. The new plastic straps are easy to lock and can be replaced at any time. All Weidmüller RockStar® enclosures are made of high quality die-cast aluminium. This makes them impact- and corrosion-resistant, yet compact and lightweight.

**General ordering data**

Type	HDC 40D TOBU 1M40G EMC	Version
Order No.	<a href="#">2544040000</a>	HDC enclosures, Installation size: 6, Protection degree: IP65, in
GTIN (EAN)	4050118648775	plugged condition, Cable entry from top, Plug housing, Side-locking
Qty.	1 ST	clamp on lower side, high, Size of cable entries: M 40
Type	HDC 40D TSBU 1M40G EMC	Version
Order No.	<a href="#">2544030000</a>	HDC enclosures, Installation size: 6, Protection degree: IP65, in
GTIN (EAN)	4050118648782	plugged condition, Cable entry from side, Plug housing, Side-locking
Qty.	1 ST	clamp on lower side, high, Size of cable entries: M 40