

## HV2700/2-M12 F

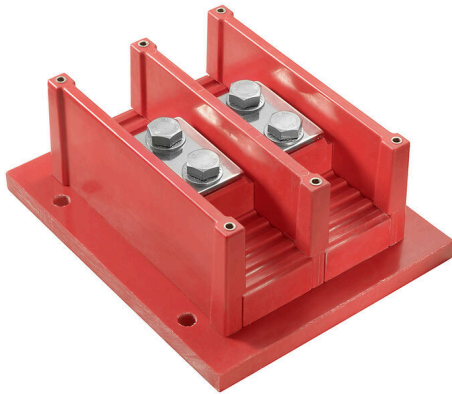
**Weidmüller Interface GmbH & Co. KG**

Klingenbergstraße 26

D-32758 Detmold

Germany

[www.weidmueller.com](http://www.weidmueller.com)



The efficient and reliable distribution of electrical power in a challenging environment requires interface solutions that are optimally designed for the special characteristics of a particular application. Perfect interplay is what you get with our high-current terminal solutions combined with Klippon® Protect enclosures in a weather-proof design. Our HV 2700 und HV 4000 high-voltage terminals provide you with a modular and scalable system which, thanks to the ring cable lug connection system, is a globally recognised and proven railway technology and easy to install anywhere in the world. The products are tested and comply with the requirements of the technical standards EN 50155, EN 50124-1, EN 45545 and IEC 61373. Our products are subject to ongoing product monitoring and development.

We have put together a small selection for you, but we are happy to configure a bespoke solution. Customised installation

The challenges for the future are reducing costs and increasing efficiency. This requires intelligent, individual solutions which are tailored to your requirements. In our application spectrum

we offer you a highly qualified customer-specific manufacturing service.

Whether you need modified products, pre-assembled terminal rails or complete small cabinets: we produce the solutions developed for your application quickly and flexibly.

### General ordering data

Version	Bolt-type screw terminals, Feed-through terminal, Screw connection
Order No.	<a href="#">2540680000</a>
Type	HV2700/2-M12 F
GTIN (EAN)	4050118554359
Qty.	1 items

## HV2700/2-M12 F

**Weidmüller Interface GmbH & Co. KG**  
 Klingenbergstraße 26  
 D-32758 Detmold  
 Germany

www.weidmueller.com

## Technical data

### Approvals

ROHS	Conform
------	---------

### Dimensions and weights

Depth	90 mm	Depth (inches)	3.5433 inch
Height	220 mm	Height (inches)	8.6614 inch
Width	180 mm	Width (inches)	7.0866 inch
Diameter	11 mm	Mounting dimension - height	130 mm
Mounting dimension - width	155 mm	Net weight	3300 g

### Temperatures

Continuous operating temp., min.	-50 °C	Continuous operating temp., max.	140 °C
----------------------------------	--------	----------------------------------	--------

### Environmental Product Compliance

RoHS Compliance Status	Compliant without exemption
REACH SVHC	No SVHC above 0.1 wt%

### Material data

Colour	red	UL 94 flammability rating	V-0
--------	-----	---------------------------	-----

### System specifications

End cover plate required	No	Number of potentials	2
Number of levels	1	Number of clamping points per level	2
Levels cross-connected internally	Yes	Mounting rail	Mounting plate

### Additional technical data

Explosion-tested version	No
--------------------------	----

### Conductors for clamping (rated connection)

Cable lug to DIN 46234	10...185 mm <sup>2</sup>	Wire connection cross section AWG, max.	kcmil 250
Connection direction	on side	Tightening torque, max.	35 Nm
Tightening torque, min.	33 Nm	Type of connection	Screw connection
Number of connections	4	Clamping range, max.	185 mm <sup>2</sup>
Clamping range, min.	10 mm <sup>2</sup>	Clamping range, bolted connection , max.	185.00 mm <sup>2</sup>
Clamping range, bolted connection , min.	10 mm <sup>2</sup>	Clamping screw	M 12
Wire connection cross section AWG, min.	AWG 6	Wire connection cross section, finely stranded, max.	185 mm <sup>2</sup>
Wire connection cross section, finely stranded, min.	10 mm <sup>2</sup>	Stud size for spade connection	M 12
Connection cross-section, finely stranded, max.	185 mm <sup>2</sup>	Connection cross-section, finely stranded, min.	10 mm <sup>2</sup>

### Dimensions

Diameter	11 mm
----------	-------

## HV2700/2-M12 F

**Weidmüller Interface GmbH & Co. KG**  
 Klingenbergstraße 26  
 D-32758 Detmold  
 Germany

[www.weidmueller.com](http://www.weidmueller.com)

## Technical data

### General

Wire connection cross section AWG, max.	kcmil 250	Wire connection cross section AWG, min.	AWG 6
Standards	EN 45545-2:2020, NFPA 130 ASTM E 162/ 662, BSS 7239/ 7242	Mounting rail	Mounting plate

### Rating data

Rated cross-section	185 mm <sup>2</sup>	Rated voltage	2700 V
Voltage with epoxy resin partition plate	2700 V	Nominal current	600 A
Current at maximum wires	600 A	Standards	EN 45545-2:2020, NFPA 130 ASTM E 162/ 662, BSS 7239/ 7242
Rated impulse withstand voltage	25 kV	Impulse voltage with epoxy resin partition plate	25 kV
Pollution severity	3		

### Classifications

ETIM 8.0	EC000897	ETIM 9.0	EC000897
ETIM 10.0	EC000897	ECLASS 14.0	27-25-01-01
ECLASS 15.0	27-25-01-01		