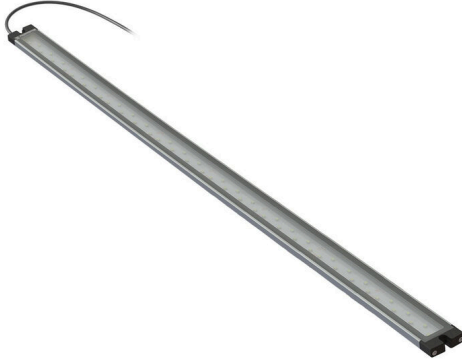


WIL-LWXXXX-6500D024-860SXX5.0BXXXXXXXXXX**Weidmüller Interface GmbH & Co. KG**
Klingenbergstraße 26
D-32758 Detmold
Germany

www.weidmueller.com



The WIL-LED lights family: Only 8mm (9.4mm with magnet) high LED lamp for 24V DC with very high luminous efficacy and high lifespan (greater 60 000h). Very robust construction, by full potting and metal housing - waterproof (IP67). Due to its 6500K light color (daylight) suitable for the various applications. Optionally easily connectable with M12 connection. Due to the low power consumption, a small enough power supply with 24V for operation.

General ordering data

Order No.	2535920000
Type	WIL-LWXXXX-6500D024-860SXX5.0BXXXXXXXXXX
GTIN (EAN)	4050118547580
Qty.	1 items

WIL-LWXXX-6500D024-860SXX5.0BXXXXXXXXXX

Weidmüller Interface GmbH & Co. KG
 Klingenbergstraße 26
 D-32758 Detmold
 Germany

www.weidmueller.com

Technical data

Approvals

Approvals



ROHS Conform

UL File Number Search [UL Website](#)

Certificate no. (cULus) E354496

Dimensions and weights

Depth	40 mm	Depth (inches)	1.5748 inch
Height	11 mm	Height (inches)	0.4331 inch
Width	860 mm	Width (inches)	33.8582 inch
Net weight	650 g		

Temperatures

Operating temperature -20 - 60°C

Environmental Product Compliance

RoHS Compliance Status Compliant without exemption

REACH SVHC No SVHC above 0.1 wt%

EPREL Registration number 1323295

Cable technical specifications

Cable Material	PUR	Sheathing colour	black
Housing main material	hard anodised aluminium	Cable length	5 m
Core cross-section	0.34 mm ²		

Connection data

LED Modul is attachable	no	Version	Cable end open
Number of poles	2	Coding	none
Connection thread	without	Wiring	Pin 4 (Strand: black) control white LED, Pin 3 (Strand: blue)

Electric data

Rated voltage	24 V DC	Rated current	1.23 A
Power	29.6 W	Dimmable	Yes

General technical data

Type of connection	Pre-assembled cable	Electronic equipment on rolling stock	No
Recommended class according to UL for NEC Class 2 use of an power supply		Shape of the LED module	Rectangular
Number of LEDs	56	Light colour (CCT)	6500K, White
Luminosity	3470 cd	Light current	3543 lm
Emitting angle	40 °	Illumination level	1059 lux
Operating life	60.000 h	Type of mounting	Screw mounting

WIL-LWXXXX-6500D024-860SXX5.0BXXXXXXXXXX

Weidmüller Interface GmbH & Co. KG
Klingenbergstraße 26
D-32758 Detmold
Germany

www.weidmueller.com

Technical data

Drill hole spacing	845 mm	Impact resistance	IK05
Protection degree	IP67	Efficiency class (according to EU Directive No. 874/2012)	Not required

Material data

Material of LED cover	ESG	Housing main material	hard anodised aluminium
Material of end caps	PBT		

Classifications

ETIM 8.0	EC000996	ETIM 9.0	EC000996
ETIM 10.0	EC000996	ECLASS 14.0	27-11-06-35
ECLASS 15.0	27-11-06-35		

WIL-LWXXXX-6500D024-860SXX5.0BXXXXXXXXXX

Weidmüller Interface GmbH & Co. KG
Klingenbergstraße 26
D-32758 Detmold
Germany

Drawings

www.weidmueller.com

Dimensioned drawing



Detailed drawing



WIL-LWXXXX-6500D024-860SXX5.0BXXXXXXXXXX
Weidmüller Interface GmbH & Co. KG
 Klingenbergstraße 26
 D-32758 Detmold
 Germany

www.weidmueller.com

Accessories

Screw terminal connector



Individual cable lengths are often required nowadays. In order to meet these demands, Weidmüller offers a wide range of plug-in connectors for custom assembly. Male plugs and female socket for customisable assembly for M8, M12, M16 and 7/8" connections which are highly robust and ideally suited to machine engineering, for instance. The M12 plug-in connectors offer a choice of 5 different connection systems.

The screw connection can be used in a wide range of applications. With this technology the conductor, optionally with wire-end ferrules, can be plugged into connection elements and secured with a screw. It is the classic, cheapest form of connection technology that also supports multi-conductor connections.

General ordering data

Type	SAIBGS-P-4A-4/6-M12	Version
Order No.	9457240000	Field attachable connector, M12
GTIN (EAN)	4008190312275	
Qty.	1 ST	
Type	SAISGS-P-4A-4/6-M12	Version
Order No.	9457550000	Field attachable connector, M12
GTIN (EAN)	4032248167647	
Qty.	1 ST	

Motion sensor screw connection



Motion detector for the WIL-LED luminaire with screw connection. Switching time adjustable.

General ordering data

Type	WIL-BM-SK	Version
Order No.	2537720000	
GTIN (EAN)	4050118549157	
Qty.	1 ST	

WIL-LWXXXX-6500D024-860SXX5.0BXXXXXXXXXX
Weidmüller Interface GmbH & Co. KG
 Klingenbergstraße 26
 D-32758 Detmold
 Germany

www.weidmueller.com

Accessories

Motion sensor screw connection with cable



Motion detector for the WIL-LED luminaire with screw connection, 3m supply cable and M12 cable for connection to the WIL lamp. Switching time adjustable.

General ordering data

Type	WIL-BM-SK-M12-3.OU	Version	
Order No.	2537700000		
GTIN (EAN)	4050118549140		
Qty.	1 ST		

Motion sensor Jackpac®



Motion detector for the WIL-LED luminaire with screw connection, 3m supply cable and M12 cable for connection to the WIL lamp. Switching time adjustable.

General ordering data

Type	WIL-BM-JP-M12-3.OU	Version	
Order No.	2537710000		
GTIN (EAN)	4050118549164		
Qty.	1 ST		

Door switch



The WIL door switch is pre-assembled with an M12 cable and an access line. This allows for a simple Plug and Produce feature with our WIL LED lamp series.

Door Switch

General ordering data

Type	WIL-TS-M12	Version	
Order No.	2537730000		
GTIN (EAN)	4050118549188		
Qty.	1 ST		

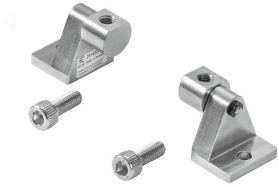
WIL-LWXXX-6500D024-860SXX5.0BXXXXXXXXXX

Weidmüller Interface GmbH & Co. KG
 Klingenbergstraße 26
 D-32758 Detmold
 Germany

www.weidmueller.com

Accessories

Swivelling holder



Swivel bracket for WIL lights Very high quality version without detent

Swivelling holder

General ordering data

Type	WIL-SCHWENKHALTER	Version	
Order No.	2614220000		
GTIN (EAN)	4050118651249		
Qty.	1 ST		

Connect Power INSTA POWER



The single-phase INSTA-POWER switching power supplies are characterised by a wide power spectrum, compact design and good value for money. They are suitable for temperature ranges from -25°C to +70°C, have international approvals and a wide voltage input range. This makes them suitable for a wide range of applications. This also includes signal and telecommunications systems as well as automation systems with a low power requirement up to 96 Watt.

General ordering data

Type	PRO INSTA 30W 24V 1.3A	Version	
Order No.	2580190000		Power supply, switch-mode power supply unit, 24 V
GTIN (EAN)	4050118590920		
Qty.	1 ST		