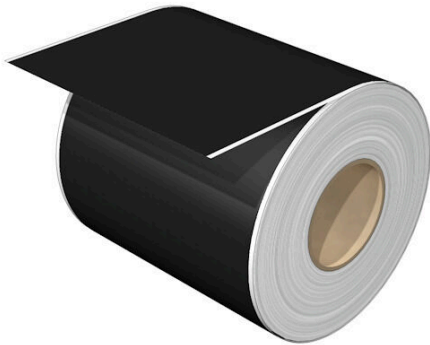


EL 100 MM SW 30M

Weidmüller Interface GmbH & Co. KG
Klingenbergstraße 26
D-32758 Detmold
Germany

www.weidmueller.com



Customised identification: EL

The endless variations of MultiMark markers make them an economical alternative to conventional tag rails or special labels. For any given width, the height can be precisely configured by the software to match the respective markers perfectly. A blade is used to cut the labels individually to the specified size. Perfect for producing large labels for function blocks or complete terminal blocks.

Your benefits with MultiMark

- “Different materials for various requirements”
- Can be used with equipment from many manufacturers
- Device markers with a familiar design

General ordering data

Version	THM, Device markers, 100 x , black
Order No.	2528430000
Type	EL 100 MM SW 30M
GTIN (EAN)	4050118539325
Qty.	1 items

EL 100 MM SW 30M

Weidmüller Interface GmbH & Co. KG
 Klingenbergstraße 26
 D-32758 Detmold
 Germany

www.weidmueller.com

Technical data

Approvals

ROHS	Conform
------	---------

Dimensions and weights

Depth	0.1 mm	Depth (inches)	0.0039 inch
Height	100 mm	Height (inches)	3.937 inch
Length	30000 mm	Length (inches)	1181.1 inch
Net weight	680 g		

Temperatures

Operating temperature range	-40...120 °C
-----------------------------	--------------

Environmental Product Compliance

RoHS Compliance Status	Compliant without exemption
REACH SVHC	No SVHC above 0.1 wt%

General data

Adhesive	Acrylate adhesive	Version	halogen-free, Self-adhesive
UL 94 flammability rating	V-0	Operating temperature range, max.	120 °C
Operating temperature range, min.	-40 °C	Colour	black
Halogen	No	Length	30000 mm
Basic material	Polyester	Printed characters	without
Approval acc. to UL 969	Yes	compatible printer	THM MULTIMARK , THM MULTIMARK PLUS
Operating temperature range	-40...120 °C	Number per roll	1

Device markers

Halogen	No
---------	----

Classifications

ETIM 8.0	EC001288	ETIM 9.0	EC001288
ETIM 10.0	EC001288	ECLASS 14.0	27-28-11-04
ECLASS 15.0	27-28-11-04		

