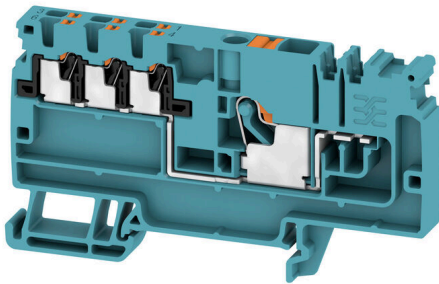


AAP11 6/6X1.5 LO-LI BL/OR**Weidmüller Interface GmbH & Co. KG**

Klingenbergstraße 26

D-32758 Detmold

Germany

www.weidmueller.com**Product image**

The unique modular concept can be tailored to every type of machine. The potential distribution terminal blocks AAP are successful thanks to their uniform design with two possible constructions – alternating or grouped. In the grouped structure of the control voltage distribution, the potentials are located on different terminal blocks and thus form entire potential blocks.

General ordering data

| | |
|------------|--|
| Version | Modular distribution terminals, PUSH IN, 6 mm ² , 500 V, 41 A, blue |
| Order No. | 2522830000 |
| Type | AAP11 6/6X1.5 LO-LI BL/OR |
| GTIN (EAN) | 4050118757194 |
| Qty. | 20 items |

AAP11 6/6X1.5 LO-LI BL/OR

Weidmüller Interface GmbH & Co. KG

Klingenbergstraße 26

D-32758 Detmold

Germany

www.weidmueller.com

Technical data

Approvals

Approvals



ROHS Conform

UL File Number Search [UL Website](#)

Certificate No. (cURus) E60693

Dimensions and weights

| | | | |
|--------------------------|-------------|----------------|-------------|
| Depth | 47 mm | Depth (inches) | 1.8504 inch |
| Depth including DIN rail | 48 mm | Height | 85.5 mm |
| Height (inches) | 3.3661 inch | Width | 8.1 mm |
| Width (inches) | 0.3189 inch | Net weight | 19.87 g |

Temperatures

| | | | |
|----------------------------------|----------------|----------------------------------|---------------|
| Storage temperature | -25 °C...55 °C | Ambient temperature | -5 °C...40 °C |
| Continuous operating temp., min. | -60 °C | Continuous operating temp., max. | 130 °C |

Environmental Product Compliance

| | |
|------------------------|-----------------------------|
| RoHS Compliance Status | Compliant without exemption |
| REACH SVHC | No SVHC above 0.1 wt% |

Material data

| | | | |
|--------------------------------|--------|---------------------------|------|
| Basic material | Wemid | Colour | blue |
| Colour of operational elements | orange | UL 94 flammability rating | V-0 |

Rating data IECEx/ATEX

| | | | |
|--------------------|---------------|---------------------|----------|
| Marking EN 60079-7 | Ex ec II C Gc | Ex 2014/34/EU label | II 2 G D |
|--------------------|---------------|---------------------|----------|

System specifications

| | | | |
|-------------------------------|-----|-------------------------------------|-------|
| End cover plate required | Yes | Number of potentials | 1 |
| Number of levels | 1 | Number of clamping points per level | 7 |
| Number of potentials per tier | 1 | Levels cross-connected internally | No |
| PE connection | No | Mounting rail | TS 35 |
| N-function | Yes | PE function | No |
| PEN function | No | | |

Additional technical data

| | | | |
|---------------------|-------|--------------------------|---------|
| Open sides | right | Type of fixing | Snap-on |
| Installation advice | Rail | Explosion-tested version | Yes |
| Type of mounting | TS 35 | | |

CSA rating data

| | | | |
|-------------------------------|-------|-----------------------|-----------------|
| Wire cross section max. (CSA) | 8 AWG | Voltage size C (CSA) | 300 V |
| Current size C (CSA) | 38 A | Certificate No. (CSA) | 200039-70089609 |
| Voltage size B (CSA) | 300 V | Current size B (CSA) | 38 A |
| Voltage size D (CSA) | 300 V | Current size D (CSA) | 10 A |

AAP11 6/6X1.5 LO-LI BL/OR

Weidmüller Interface GmbH & Co. KG
 Klingenbergstraße 26
 D-32758 Detmold
 Germany

www.weidmueller.com

Technical data

Wire cross section min. (CSA) 26 AWG

Conductors for clamping (additional connection)

| | | | |
|---|----------------------|---|---------------------|
| Connection direction additional connection | top | Clamping range, further connection, max. | 1.5 mm ² |
| Clamping range, further connection, min. | 0.14 mm ² | Conductor cross-section, flexible plus plastic collar DIN 46228/1, further connection, max. | 1.5 mm ² |
| Conductor cross-section, flexible plus plastic collar DIN 46228/1, further connection, min. | 0.5 mm ² | Conductor cross-section, flexible, further connection, min. | 0.5 mm ² |
| Number of connections, additional connection | 6 | Rated cross-section, further connection | 1.5 mm ² |
| Blade size, additional connection | 0.4 x 2.0 mm | Cross-section for connected wire, multi-core, further connection, min. | 0.5 mm ² |
| Cross-section for connected wire, multi-core, further connection, max. | 1.5 mm ² | Rated current, additional connection | 17.5 A |
| Cross-section for connected wire, solid-core, further connection, min. | 0.5 mm ² | Cross-section for connected wire, solid-core, further connection, max. | 1.5 mm ² |
| Connection type, additional connection | PUSH IN | Cross-section for connected wire, flexible, further connection, max. | 1.5 mm ² |
| Stripping length, additional connection | 8 mm | | |

Conductors for clamping (rated connection)

| | |
|---|----------------------|
| Gauge to IEC 60947-1 | A5 |
| Wire connection cross section AWG, max. | AWG 8 |
| Connection direction | top |
| Stripping length | 12 mm |
| Type of connection | PUSH IN |
| Number of connections | 1 |
| Clamping range, max. | 6 mm ² |
| Clamping range, min. | 0.34 mm ² |
| Blade size | 1.0 x 5.5 mm |
| Wire connection cross section AWG, min. | AWG 22 |
| Wire connection cross-section, finely stranded with wire-end ferrules DIN 46228/4, max. | 6 mm ² |
| Wire connection cross-section, finely stranded with wire-end ferrules DIN 46228/4, min. | 0.34 mm ² |
| Wire connection cross-section, finely stranded with wire-end ferrules DIN 46228/1, max. | 6 mm ² |
| Wire connection cross-section, finely stranded with wire-end ferrules DIN 46228/1, min. | 0.34 mm ² |
| Wire connection cross section, finely stranded, max. | 6 mm ² |
| Wire connection cross section, finely stranded, min. | 0.34 mm ² |
| Connection cross-section, stranded, max. | 6 mm ² |
| Connection cross-section, stranded, min. | 0.34 mm ² |
| Twin wire-end ferrules, max. | 1.5 mm ² |
| Twin wire-end ferrules, min. | 0.5 mm ² |
| Wire connection cross-section, solid core, max. | 6 mm ² |

AAP11 6/6X1.5 LO-LI BL/OR

Weidmüller Interface GmbH & Co. KG

Klingenbergstraße 26

D-32758 Detmold

Germany

www.weidmueller.com

Technical data

| | | | | |
|--|---|--|----------------------|---------------------|
| Wire connection cross-section, solid core, min. | 0.34 mm ² | | | |
| Tube length for wire-end ferrule with plastic collar DIN 46228/4 | Tube length | min. | 10 mm | |
| | | max. | 12 mm | |
| | Cross-section for conductor connection | min. | 0.5 mm ² | |
| | | max. | 1 mm ² | |
| | Tube length | min. | 10 mm | |
| | | max. | 18 mm | |
| | Cross-section for conductor connection | nominal | 1.5 mm ² | |
| | Tube length | min. | 12 mm | |
| | | max. | 18 mm | |
| | Cross-section for conductor connection | nominal | 2.5 mm ² | |
| | Tube length | min. | 10 mm | |
| | | max. | 18 mm | |
| Cross-section for conductor connection | | min. | 4 mm ² | |
| | | max. | 6 mm ² | |
| Tube length for twin wire-end ferrule | Tube length | min. | 10 mm | |
| | | max. | 12 mm | |
| | Cross-section for conductor connection | nominal | 0.5 mm ² | |
| | Tube length | min. | 10 mm | |
| | | max. | 18 mm | |
| | Cross-section for conductor connection | nominal | 0.75 mm ² | |
| | Tube length | min. | 12 mm | |
| | | max. | 18 mm | |
| | Cross-section for conductor connection | min. | 1 mm ² | |
| | | max. | 1.5 mm ² | |
| | Tube length for wire-end ferrule without plastic collar DIN 46228/1 | Tube length | nominal | 10 mm |
| | | Cross-section for conductor connection | min. | 0.5 mm ² |
| max. | | | 1 mm ² | |
| Tube length | | min. | 10 mm | |
| Cross-section for conductor connection | | min. | 1.5 mm ² | |
| | | max. | 2.5 mm ² | |
| Tube length | | min. | 12 mm | |
| | | max. | 18 mm | |
| Cross-section for conductor connection | | nominal | 4 mm ² | |
| Tube length | | min. | 10 mm | |
| | | max. | 18 mm | |
| Cross-section for conductor connection | | min. | 6 mm ² | |
| | max. | 10 mm ² | | |

General

| | | | |
|---|--------|---------------------|---------------|
| Wire connection cross section AWG, max. | AWG 8 | Installation advice | Rail |
| Wire connection cross section AWG, min. | AWG 22 | Standards | IEC 60947-7-1 |
| Mounting rail | TS 35 | | |

Rating data

| | | | |
|--|-------------------|---------------------------------|---------------|
| Rated cross-section | 6 mm ² | Rated voltage | 500 V |
| Rated DC voltage | 500 V | Nominal current | 41 A |
| Current at maximum wires | 41 A | Standards | IEC 60947-7-1 |
| Volume resistance according to IEC 60947-7-x | 0.78 mΩ | Rated impulse withstand voltage | 6 kV |
| Power loss in accordance with IEC 60947-7-x | 1.31 W | Pollution severity | 3 |

AAP11 6/6X1.5 LO-LI BL/OR

Weidmüller Interface GmbH & Co. KG

Klingenbergstraße 26

D-32758 Detmold

Germany

www.weidmueller.com

Technical data

UL rating data

| | | | |
|--|--------|--|--------|
| Conductor size Factory wiring max. (cURus) | 8 AWG | Voltage size B (cURus) | 300 V |
| Voltage size D (cURus) | 300 V | Certificate No. (cURus) | E60693 |
| Conductor size Field wiring min. (cURus) | 26 AWG | Conductor size Factory wiring min. (cURus) | 26 AWG |
| Current size B (cURus) | 38 A | Voltage size C (cURus) | 300 V |
| Current size C (cURus) | 38 A | Current size D (cURus) | 10 A |
| Conductor size Field wiring max. (cURus) | 8 AWG | | |

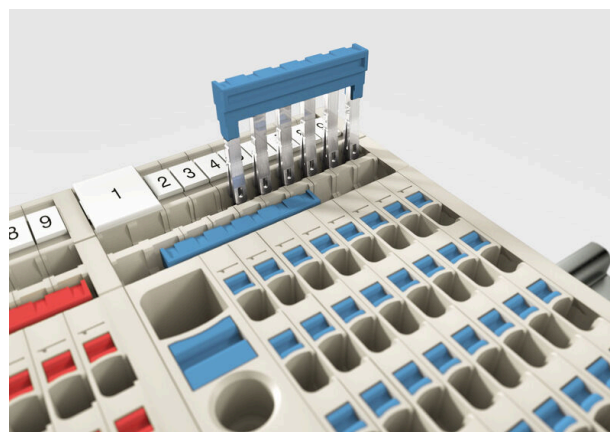
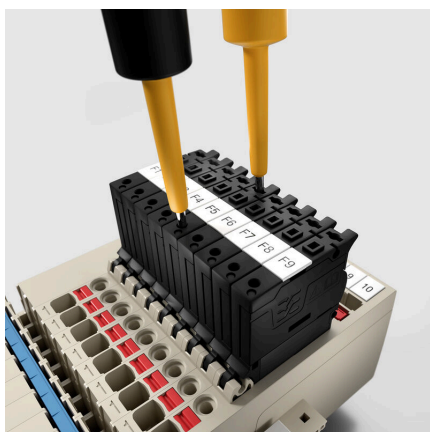
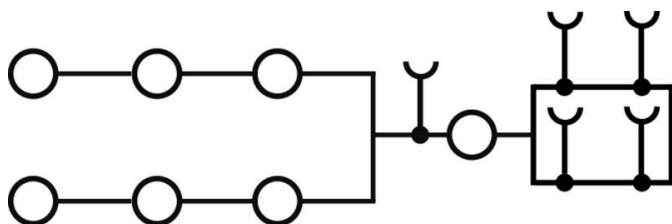
Important note

| | |
|---------------------|---|
| Product information | The applicable safety regulations for the overload and short-circuit of the connected conductors must be followed. The total current of all connected conductors must not exceed the max. load current. |
|---------------------|---|

Classifications

| | | | |
|-------------|-------------|-------------|-------------|
| ETIM 8.0 | EC000897 | ETIM 9.0 | EC000897 |
| ETIM 10.0 | EC000897 | ECLASS 14.0 | 27-25-01-01 |
| ECLASS 15.0 | 27-25-01-01 | | |

Drawings



AAP11 6/6X1.5 LO-LI BL/OR

Weidmüller Interface GmbH & Co. KG

Klingenbergstraße 26

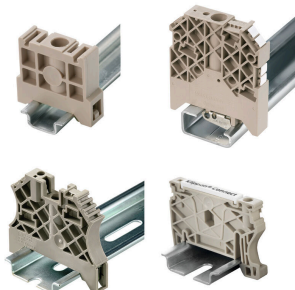
D-32758 Detmold

Germany

www.weidmueller.com

Accessories

End bracket



Weidmüller's range of products includes end brackets that guarantee a permanent, reliable mounting on the terminal rail and prevent sliding. Versions with and without screws are available. The end brackets include marking options, also for group markers, and also a test plug holder.

General ordering data

| | | |
|------------|----------------------------|-----------------------|
| Type | AEB 35 SC/1 | Version |
| Order No. | 1991920000 | A-series, End bracket |
| GTIN (EAN) | 4050118376722 | |
| Qty. | 50 ST | |
| Type | AEB 35 SC/1 BK | Version |
| Order No. | 2475310000 | A-series, End bracket |
| GTIN (EAN) | 4050118487114 | |
| Qty. | 50 ST | |

Marker holder



The marker holder offer the possibility of additional mounting of standard markers with a pitch of 5 or 5.1 mm. The angled holders can be optionally snapped together and could be mounted in all standard marking channels of the Klippon® Connect modular terminal blocks. Fitting marker types could be found under the respective accessories of the designation marking holder.

General ordering data

| | | |
|------------|----------------------------|----------------------------|
| Type | BZT 1 WS 10/5 | Version |
| Order No. | 1805490000 | Accessories, Marker holder |
| GTIN (EAN) | 4032248270231 | |
| Qty. | 100 ST | |
| Type | BZT 1 ZA WS 10/5 | Version |
| Order No. | 1805520000 | Accessories, Marker holder |
| GTIN (EAN) | 4032248270248 | |
| Qty. | 100 ST | |

AAP11 6/6X1.5 LO-LI BL/OR

Weidmüller Interface GmbH & Co. KG

Klingenbergstraße 26

D-32758 Detmold

Germany

www.weidmueller.com

Accessories

End plates and partition plates

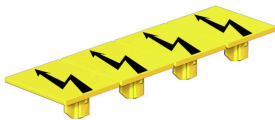


Partition plates and end plates are essential accessories for terminal blocks. Partition plates provide optical and electrical separation of different potentials and functional groups, increasing safety and ensuring a clear structure inside the control cabinet. End plates close the terminal block row on the sides, protect against contact with live parts, and ensure a clean, stable finish. Both components are precisely matched to the respective Weidmüller terminal block series, contributing to safe, compliant, and professional wiring.

General ordering data

| | | |
|------------|----------------------------|---------------------------|
| Type | APP 3 | Version |
| Order No. | 2489100000 | A-series, Partition plate |
| GTIN (EAN) | 4050118499315 | |
| Qty. | 50 ST | |

Warning cover

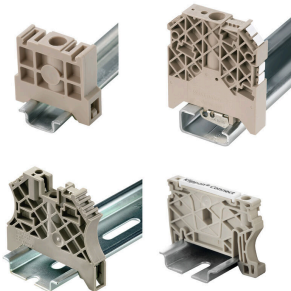


Warning covers with a flash symbol provide more safety for man and machine. They are used where external voltage must be indicated within the application.

General ordering data

| | | |
|------------|----------------------------|--|
| Type | AAM 6 YE FLASH | Version |
| Order No. | 2635570000 | A-series, Terminal marker, 13 x 8.1 mm, Pitch in mm (P): 8.00 yellow |
| GTIN (EAN) | 4050118674514 | |
| Qty. | 40 ST | |

End bracket



Weidmüller's range of products includes end brackets that guarantee a permanent, reliable mounting on the terminal rail and prevent sliding. Versions with and without screws are available. The end brackets include marking options, also for group markers, and also a test plug holder.

General ordering data

| | | |
|------------|----------------------------|-----------------------|
| Type | AEB 35 SCL/1 V0 | Version |
| Order No. | 2661280000 | A-series, End bracket |
| GTIN (EAN) | 4050118702163 | |
| Qty. | 20 ST | |

AAP11 6/6X1.5 LO-LI BL/OR

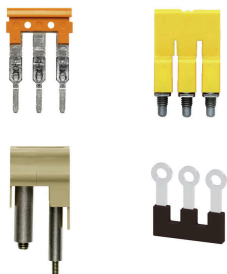
Weidmüller Interface GmbH & Co. KG
 Klingenbergstraße 26
 D-32758 Detmold
 Germany

www.weidmueller.com

Accessories

| | | |
|------------|----------------------------|-----------------------|
| Type | AEB 35 SCL/1 V0 BK | Version |
| Order No. | 2661300000 | A-series, End bracket |
| GTIN (EAN) | 4050118702187 | |
| Qty. | 20 ST | |
| Type | AEB 35 SCL/1 V0 GY | Version |
| Order No. | 2661290000 | A-series, End bracket |
| GTIN (EAN) | 4050118702170 | |
| Qty. | 20 ST | |

Cross-connections



The distribution or multiplication of a potential to adjoining terminal blocks is realized via a cross-connection. Additional wiring effort can be easily avoided. Even if the poles are broken out, contact reliability in the terminal blocks is still ensured. Our portfolio offers pluggable and screwable cross-connection systems for modular terminal blocks.

General ordering data

| | | |
|------------|----------------------------|--|
| Type | ZQV 1.5N/9 RD | Version |
| Order No. | 1985790000 | Cross-connector (terminal), Plugged, red, 17.5 A, Number of poles: 9, |
| GTIN (EAN) | 4050118370386 | Pitch in mm (P): 3.50, Insulated: Yes, Width: 30 mm |
| Qty. | 20 ST | |
| Type | ZQV 1.5N/9 BL | Version |
| Order No. | 1985660000 | Cross-connector (terminal), Plugged, blue, 17.5 A, Number of poles: 9, |
| GTIN (EAN) | 4050118370478 | Pitch in mm (P): 3.50, Insulated: Yes, Width: 30 mm |
| Qty. | 20 ST | |
| Type | ZQV 1.5N/9 | Version |
| Order No. | 1985560000 | Cross-connector (terminal), Plugged, orange, 17.5 A, Number of |
| GTIN (EAN) | 4050118370409 | poles: 9, Pitch in mm (P): 3.50, Insulated: Yes, Width: 30 mm |
| Qty. | 20 ST | |
| Type | ZQV 1.5N/8 RD | Version |
| Order No. | 1985770000 | Cross-connector (terminal), Plugged, red, 17.5 A, Number of poles: 8, |
| GTIN (EAN) | 4050118370508 | Pitch in mm (P): 3.50, Insulated: Yes, Width: 26.5 mm |
| Qty. | 20 ST | |
| Type | ZQV 1.5N/8 BL | Version |
| Order No. | 1985640000 | Cross-connector (terminal), Plugged, blue, 17.5 A, Number of poles: 8, |
| GTIN (EAN) | 4050118370461 | Pitch in mm (P): 3.50, Insulated: Yes, Width: 26.5 mm |
| Qty. | 20 ST | |
| Type | ZQV 1.5N/8 | Version |
| Order No. | 1985540000 | Cross-connector (terminal), Plugged, orange, 17.5 A, Number of |
| GTIN (EAN) | 4050118370218 | poles: 8, Pitch in mm (P): 3.50, Insulated: Yes, Width: 26.5 mm |
| Qty. | 20 ST | |
| Type | ZQV 1.5N/7 RD | Version |
| Order No. | 1985750000 | Cross-connector (terminal), Plugged, red, 17.5 A, Number of poles: 7, |
| GTIN (EAN) | 4050118370249 | Pitch in mm (P): 3.50, Insulated: Yes, Width: 23 mm |
| Qty. | 20 ST | |

AAP11 6/6X1.5 LO-LI BL/OR

Weidmüller Interface GmbH & Co. KG

Klingenbergstraße 26

D-32758 Detmold

Germany

www.weidmueller.com

Accessories

| | | |
|------------|----------------------------|--|
| Type | ZQV 1.5N/7 BL | Version |
| Order No. | 1985630000 | Cross-connector (terminal), Plugged, blue, 17.5 A, Number of poles: 7, |
| GTIN (EAN) | 4050118370522 | Pitch in mm (P): 3.50, Insulated: Yes, Width: 23 mm |
| Qty. | 20 ST | |
| Type | ZQV 1.5N/7 | Version |
| Order No. | 1985520000 | Cross-connector (terminal), Plugged, orange, 17.5 A, Number of |
| GTIN (EAN) | 4050118370195 | poles: 7, Pitch in mm (P): 3.50, Insulated: Yes, Width: 23 mm |
| Qty. | 20 ST | |
| Type | ZQV 1.5N/6 RD | Version |
| Order No. | 1985730000 | Cross-connector (terminal), Plugged, red, 17.5 A, Number of poles: 6, |
| GTIN (EAN) | 4050118370454 | Pitch in mm (P): 3.50, Insulated: Yes, Width: 19.5 mm |
| Qty. | 20 ST | |
| Type | ZQV 1.5N/6 BL | Version |
| Order No. | 1985610000 | Cross-connector (terminal), Plugged, blue, 17.5 A, Number of poles: 6, |
| GTIN (EAN) | 4050118370492 | Pitch in mm (P): 3.50, Insulated: Yes, Width: 19.5 mm |
| Qty. | 20 ST | |
| Type | ZQV 1.5N/6 | Version |
| Order No. | 1985510000 | Cross-connector (terminal), Plugged, orange, 17.5 A, Number of |
| GTIN (EAN) | 4050118370188 | poles: 6, Pitch in mm (P): 3.50, Insulated: Yes, Width: 19.5 mm |
| Qty. | 20 ST | |
| Type | ZQV 1.5N/50 RD | Version |
| Order No. | 1985820000 | Cross-connector (terminal), Plugged, red, 17.5 A, Number of poles: |
| GTIN (EAN) | 4050118370270 | 50, Pitch in mm (P): 3.50, Insulated: Yes, Width: 175 mm |
| Qty. | 5 ST | |
| Type | ZQV 1.5N/50 BL | Version |
| Order No. | 1985720000 | Cross-connector (terminal), Plugged, blue, 17.5 A, Number of poles: |
| GTIN (EAN) | 4050118370546 | 50, Pitch in mm (P): 3.50, Insulated: Yes, Width: 175 mm |
| Qty. | 5 ST | |
| Type | ZQV 1.5N/50 | Version |
| Order No. | 1985620000 | Cross-connector (terminal), Plugged, orange, 17.5 A, Number of |
| GTIN (EAN) | 4050118370300 | poles: 50, Pitch in mm (P): 3.50, Insulated: Yes, Width: 175 mm |
| Qty. | 5 ST | |
| Type | ZQV 1.5N/5 RD | Version |
| Order No. | 1985710000 | Cross-connector (terminal), Plugged, red, 17.5 A, Number of poles: 5, |
| GTIN (EAN) | 4050118370256 | Pitch in mm (P): 3.50, Insulated: Yes, Width: 16 mm |
| Qty. | 20 ST | |
| Type | ZQV 1.5N/5 BL | Version |
| Order No. | 1985590000 | Cross-connector (terminal), Plugged, blue, 17.5 A, Number of poles: 5, |
| GTIN (EAN) | 4050118370430 | Pitch in mm (P): 3.50, Insulated: Yes, Width: 16 mm |
| Qty. | 20 ST | |
| Type | ZQV 1.5N/5 | Version |
| Order No. | 1985500000 | Cross-connector (terminal), Plugged, orange, 17.5 A, Number of |
| GTIN (EAN) | 4050118369991 | poles: 5, Pitch in mm (P): 3.50, Insulated: Yes, Width: 16 mm |
| Qty. | 20 ST | |
| Type | ZQV 1.5N/4 RD | Version |
| Order No. | 1985690000 | Cross-connector (terminal), Plugged, red, 17.5 A, Number of poles: 4, |
| GTIN (EAN) | 4050118370515 | Pitch in mm (P): 3.50, Insulated: Yes, Width: 12.5 mm |
| Qty. | 60 ST | |
| Type | ZQV 1.5N/4 BL | Version |
| Order No. | 1985570000 | Cross-connector (terminal), Plugged, blue, 17.5 A, Number of poles: 4, |
| GTIN (EAN) | 4050118370317 | Pitch in mm (P): 3.50, Insulated: Yes, Width: 12.5 mm |
| Qty. | 60 ST | |

AAP11 6/6X1.5 LO-LI BL/OR

Weidmüller Interface GmbH & Co. KG

Klingenbergstraße 26

D-32758 Detmold

Germany

www.weidmueller.com

Accessories

| | | |
|------------|----------------------------|--|
| Type | ZQV 1.5N/4 | Version |
| Order No. | 1985490000 | Cross-connector (terminal), Plugged, orange, 17.5 A, Number of |
| GTIN (EAN) | 4050118370201 | poles: 4, Pitch in mm (P): 3.50, Insulated: Yes, Width: 12.5 mm |
| Qty. | 60 ST | |
| Type | ZQV 1.5N/3 RD | Version |
| Order No. | 1985670000 | Cross-connector (terminal), Plugged, red, 17.5 A, Number of poles: 3, |
| GTIN (EAN) | 4050118370348 | Pitch in mm (P): 3.50, Insulated: Yes, Width: 9 mm |
| Qty. | 60 ST | |
| Type | ZQV 1.5N/3 BL | Version |
| Order No. | 1985550000 | Cross-connector (terminal), Plugged, blue, 17.5 A, Number of poles: 3, |
| GTIN (EAN) | 4050118370485 | Pitch in mm (P): 3.50, Insulated: Yes, Width: 9 mm |
| Qty. | 60 ST | |
| Type | ZQV 1.5N/3 | Version |
| Order No. | 1985480000 | Cross-connector (terminal), Plugged, orange, 17.5 A, Number of |
| GTIN (EAN) | 4050118370096 | poles: 3, Pitch in mm (P): 3.50, Insulated: Yes, Width: 9 mm |
| Qty. | 60 ST | |
| Type | ZQV 1.5N/20 RD | Version |
| Order No. | 1985810000 | Cross-connector (terminal), Plugged, red, 17.5 A, Number of poles: |
| GTIN (EAN) | 4050118370355 | 20, Pitch in mm (P): 3.50, Insulated: Yes, Width: 70 mm |
| Qty. | 20 ST | |
| Type | ZQV 1.5N/20 BL | Version |
| Order No. | 1985700000 | Cross-connector (terminal), Plugged, blue, 17.5 A, Number of poles: |
| GTIN (EAN) | 4050118370331 | 20, Pitch in mm (P): 3.50, Insulated: Yes, Width: 70 mm |
| Qty. | 20 ST | |
| Type | ZQV 1.5N/20 | Version |
| Order No. | 1985600000 | Cross-connector (terminal), Plugged, orange, 17.5 A, Number of |
| GTIN (EAN) | 4050118370225 | poles: 20, Pitch in mm (P): 3.50, Insulated: Yes, Width: 70 mm |
| Qty. | 20 ST | |
| Type | ZQV 1.5N/2 RD | Version |
| Order No. | 1985650000 | Cross-connector (terminal), Plugged, red, 17.5 A, Number of poles: 2, |
| GTIN (EAN) | 4050118370324 | Pitch in mm (P): 3.50, Insulated: Yes, Width: 5.5 mm |
| Qty. | 60 ST | |
| Type | ZQV 1.5N/2 BL | Version |
| Order No. | 1985530000 | Cross-connector (terminal), Plugged, blue, 17.5 A, Number of poles: 2, |
| GTIN (EAN) | 4050118370423 | Pitch in mm (P): 3.50, Insulated: Yes, Width: 5.5 mm |
| Qty. | 60 ST | |
| Type | ZQV 1.5N/2 | Version |
| Order No. | 1985410000 | Cross-connector (terminal), Plugged, orange, 17.5 A, Number of |
| GTIN (EAN) | 4050118369861 | poles: 2, Pitch in mm (P): 3.50, Insulated: Yes, Width: 5.5 mm |
| Qty. | 60 ST | |
| Type | ZQV 1.5N/10 RD | Version |
| Order No. | 1985800000 | Cross-connector (terminal), Plugged, red, 17.5 A, Number of poles: |
| GTIN (EAN) | 4050118370393 | 10, Pitch in mm (P): 3.50, Insulated: Yes, Width: 33.5 mm |
| Qty. | 20 ST | |
| Type | ZQV 1.5N/10 BL | Version |
| Order No. | 1985680000 | Cross-connector (terminal), Plugged, blue, 17.5 A, Number of poles: |
| GTIN (EAN) | 4050118370539 | 10, Pitch in mm (P): 3.50, Insulated: Yes, Width: 33.5 mm |
| Qty. | 20 ST | |
| Type | ZQV 1.5N/10 | Version |
| Order No. | 1985580000 | Cross-connector (terminal), Plugged, orange, 17.5 A, Number of |
| GTIN (EAN) | 4050118370416 | poles: 10, Pitch in mm (P): 3.50, Insulated: Yes, Width: 33.5 mm |
| Qty. | 20 ST | |

AAP11 6/6X1.5 LO-LI BL/OR

Weidmüller Interface GmbH & Co. KG
 Klingenbergstraße 26
 D-32758 Detmold
 Germany

www.weidmueller.com

Accessories

End plates and partition plates



Partition plates and end plates are essential accessories for terminal blocks. Partition plates provide optical and electrical separation of different potentials and functional groups, increasing safety and ensuring a clear structure inside the control cabinet. End plates close the terminal block row on the sides, protect against contact with live parts, and ensure a clean, stable finish. Both components are precisely matched to the respective Weidmüller terminal block series, contributing to safe, compliant, and professional wiring.

General ordering data

| | | |
|------------|----------------------------|---------------------|
| Type | AEP AP 11 | Version |
| Order No. | 1988320000 | A-series, End plate |
| GTIN (EAN) | 4050118372854 | |
| Qty. | 20 ST | |

Testadapter and testsockets



Test adapters and test plugs are used for the electrical connection between terminal blocks and the test equipment. In this way, an electrical contact can be established in the wired state and measurements can be done easily.

General ordering data

| | | |
|------------|----------------------------|---|
| Type | ATPG 1.5 MI-R | Version |
| Order No. | 1991880000 | Test adapter (terminal), 1.5 mm ² , 250 V, 0.2 A |
| GTIN (EAN) | 4050118376715 | |
| Qty. | 50 ST | |
| Type | ATPG 1.5-10 L | Version |
| Order No. | 1991890000 | Test adapter (terminal), 1.5 mm ² , 250 V, 0.2 A |
| GTIN (EAN) | 4050118376647 | |
| Qty. | 50 ST | |
| Type | ATPG 10 MI-R | Version |
| Order No. | 1991870000 | Test adapter (terminal), 1.5 mm ² , 250 V, 0.2 A |
| GTIN (EAN) | 4050118376678 | |
| Qty. | 50 ST | |
| Type | ATPG 2.5 MI-R | Version |
| Order No. | 1991960000 | Test adapter (terminal), 1.5 mm ² , 250 V, 0.2 A |
| GTIN (EAN) | 4050118376685 | |
| Qty. | 50 ST | |
| Type | ATPG 4 MI-R | Version |
| Order No. | 1991860000 | Test adapter (terminal), 1.5 mm ² , 250 V, 0.2 A |
| GTIN (EAN) | 4050118376661 | |
| Qty. | 50 ST | |

AAP11 6/6X1.5 LO-LI BL/OR

Weidmüller Interface GmbH & Co. KG

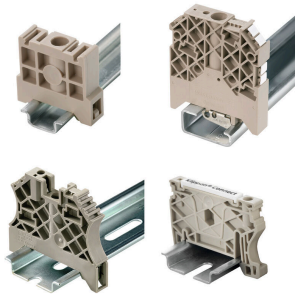
 Klingenbergstraße 26
 D-32758 Detmold
 Germany

www.weidmueller.com

Accessories

| | | |
|------------|----------------------------|--|
| Type | ATPG 6 MI-R | Version |
| Order No. | 1991930000 | Test adapter (terminal), 1.5 mm², 250 V, 0.2 A |
| GTIN (EAN) | 4050118376555 | |
| Qty. | 50 ST | |

End bracket



Weidmüller's range of products includes end brackets that guarantee a permanent, reliable mounting on the terminal rail and prevent sliding. Versions with and without screws are available. The end brackets include marking options, also for group markers, and also a test plug holder.

General ordering data

| | | |
|------------|----------------------------|-----------------------|
| Type | AEB 35 SCL/1 V0 BK DL | Version |
| Order No. | 2570250000 | A-series, End bracket |
| GTIN (EAN) | 4050118580266 | |
| Qty. | 50 ST | |
| Type | AEB 35 SCL/1 V0 DL | Version |
| Order No. | 2570240000 | A-series, End bracket |
| GTIN (EAN) | 4050118580259 | |
| Qty. | 50 ST | |
| Type | AEB 35 SCL/1 V0 GY DL | Version |
| Order No. | 2570260000 | A-series, End bracket |
| GTIN (EAN) | 4050118580273 | |
| Qty. | 50 ST | |

WS 12/8



WS/ DEK

MultiMark terminal markers use an innovative composite material made from two components. The hard base contour of the marker snaps securely into the connector. The elastic surface finish makes the marker easy to mount. This specially punched material enables the strips to be stretched to accommodate the slight variations in spacing that tend to add up, especially with long terminal blocks. Another advantage: the excellent printability of the surface material guarantees durable and wear-resistant labelling. A print resolution of 300 dpi also produces a very legible script.

Your benefits with MultiMark

- Firm hold and durable printing
- Continuous strips save installation time
- Easy mounting thanks to an innovative composite material
- Large label field for optimal legibility
- High flexibility thanks to manufacturer independence

AAP11 6/6X1.5 LO-LI BL/OR

Weidmüller Interface GmbH & Co. KG

Klingenbergstraße 26

D-32758 Detmold

Germany

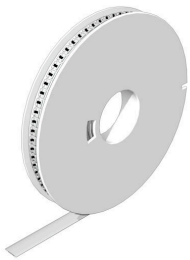
www.weidmueller.com

Accessories

General ordering data

| | | |
|------------|----------------------------|--|
| Type | WS-A 12/8 MM WS | Version |
| Order No. | 2448920000 | WS, Terminal marker, 12 x 8.1 mm, Weidmueller, white |
| GTIN (EAN) | 4050118462975 | |
| Qty. | 500 ST | |

WS 12/6.5



WS/ DEK

MultiMark terminal markers use an innovative composite material made from two components. The hard base contour of the marker snaps securely into the connector. The elastic surface finish makes the marker easy to mount. This specially punched material enables the strips to be stretched to accommodate the slight variations in spacing that tend to add up, especially with long terminal blocks. Another advantage: the excellent printability of the surface material guarantees durable and wear-resistant labelling. A print resolution of 300 dpi also produces a very legible script.

Your benefits with MultiMark

- Firm hold and durable printing
- Continuous strips save installation time
- Easy mounting thanks to an innovative composite material
- Large label field for optimal legibility
- High flexibility thanks to manufacturer independence

General ordering data

| | | |
|------------|----------------------------|--|
| Type | WS 12/6.5 MM WS | Version |
| Order No. | 2619930000 | WS, Terminal marker, 12 x 6.5 mm, Weidmueller, white |
| GTIN (EAN) | 4050118626155 | |
| Qty. | 600 ST | |

WS 12/6



WS/ DEK

MultiMark terminal markers use an innovative composite material made from two components. The hard base contour of the marker snaps securely into the connector. The elastic surface finish makes the marker easy to mount. This specially punched material enables the strips to be stretched to accommodate the slight variations in spacing that tend to add up, especially with long terminal blocks. Another advantage: the excellent printability of the surface material guarantees durable and wear-resistant labelling. A print resolution of 300 dpi also produces a very legible script.

Your benefits with MultiMark

- Firm hold and durable printing
- Continuous strips save installation time
- Easy mounting thanks to an innovative composite material
- Large label field for optimal legibility
- High flexibility thanks to manufacturer independence

AAP11 6/6X1.5 LO-LI BL/OR

Weidmüller Interface GmbH & Co. KG

Klingenbergstraße 26

D-32758 Detmold

Germany

www.weidmueller.com

Accessories

General ordering data

| | | |
|------------|----------------------------|--|
| Type | WS 12/6 MM WS | Version |
| Order No. | 2007200000 | WS, Terminal marker, 12 x 6 mm, Weidmueller, white |
| GTIN (EAN) | 4050118391886 | |
| Qty. | 600 ST | |
| Type | WS 12/6 MM BP WS | Version |
| Order No. | 2619860000 | WS, Terminal marker, 12 x 6 mm, Pitch in mm (P): 6.00 Weidmueller, |
| GTIN (EAN) | 4050118626223 | white |
| Qty. | 4500 ST | |

WS 12/5



WS/ DEK

MultiMark terminal markers use an innovative composite material made from two components. The hard base contour of the marker snaps securely into the connector. The elastic surface finish makes the marker easy to mount. This specially punched material enables the strips to be stretched to accommodate the slight variations in spacing that tend to add up, especially with long terminal blocks. Another advantage: the excellent printability of the surface material guarantees durable and wear-resistant labelling. A print resolution of 300 dpi also produces a very legible script.

Your benefits with MultiMark

- Firm hold and durable printing
- Continuous strips save installation time
- Easy mounting thanks to an innovative composite material
- Large label field for optimal legibility
- High flexibility thanks to manufacturer independence

General ordering data

| | | |
|------------|----------------------------|--|
| Type | WS 12/5 MM WS | Version |
| Order No. | 2007190000 | WS, Terminal marker, 12 x 5 mm, Weidmueller, white |
| GTIN (EAN) | 4050118392036 | |
| Qty. | 800 ST | |
| Type | WS 12/5 MM BP WS | Version |
| Order No. | 2619850000 | WS, Terminal marker, 12 x 5 mm, Weidmueller, white |
| GTIN (EAN) | 4050118626230 | |
| Qty. | 5500 ST | |

AAP11 6/6X1.5 LO-LI BL/OR

Weidmüller Interface GmbH & Co. KG

Klingenbergstraße 26

D-32758 Detmold

Germany

www.weidmueller.com

Accessories

WS 12/3.5



WS/ DEK

MultiMark terminal markers use an innovative composite material made from two components. The hard base contour of the marker snaps securely into the connector. The elastic surface finish makes the marker easy to mount. This specially punched material enables the strips to be stretched to accommodate the slight variations in spacing that tend to add up, especially with long terminal blocks. Another advantage: the excellent printability of the surface material guarantees durable and wear-resistant labelling. A print resolution of 300 dpi also produces a very legible script.

Your benefits with MultiMark

- Firm hold and durable printing
- Continuous strips save installation time
- Easy mounting thanks to an innovative composite material
- Large label field for optimal legibility
- High flexibility thanks to manufacturer independence

General ordering data

| | | |
|------------|----------------------------|--|
| Type | WS 12/3.5 MM WS | Version |
| Order No. | 2007180000 | WS, Terminal marker, 12 x 3.5 mm, Weidmueller, white |
| GTIN (EAN) | 4050118392203 | |
| Qty. | 1000 ST | |
| Type | WS 12/3.5 MM BP WS | Version |
| Order No. | 2619840000 | WS, Terminal marker, 12 x 3.5 mm, Weidmueller, white |
| GTIN (EAN) | 4050118626247 | |
| Qty. | 8000 ST | |

WS 8/8



WS/ DEK

MultiMark terminal markers use an innovative composite material made from two components. The hard base contour of the marker snaps securely into the connector. The elastic surface finish makes the marker easy to mount. This specially punched material enables the strips to be stretched to accommodate the slight variations in spacing that tend to add up, especially with long terminal blocks. Another advantage: the excellent printability of the surface material guarantees durable and wear-resistant labelling. A print resolution of 300 dpi also produces a very legible script.

Your benefits with MultiMark

- Firm hold and durable printing
- Continuous strips save installation time
- Easy mounting thanks to an innovative composite material
- Large label field for optimal legibility
- High flexibility thanks to manufacturer independence

AAP11 6/6X1.5 LO-LI BL/OR

Weidmüller Interface GmbH & Co. KG

Klingenbergstraße 26

D-32758 Detmold

Germany

www.weidmueller.com

Accessories

General ordering data

| | | |
|------------|----------------------------|---|
| Type | WS-A 8/8 MM WS | Version |
| Order No. | 2448930000 | WS, Terminal marker, 8 x 8.1 mm, Weidmueller, white |
| GTIN (EAN) | 4050118462982 | |
| Qty. | 500 ST | |

WS 8/6



WS/ DEK

MultiMark terminal markers use an innovative composite material made from two components. The hard base contour of the marker snaps securely into the connector. The elastic surface finish makes the marker easy to mount. This specially punched material enables the strips to be stretched to accommodate the slight variations in spacing that tend to add up, especially with long terminal blocks. Another advantage: the excellent printability of the surface material guarantees durable and wear-resistant labelling. A print resolution of 300 dpi also produces a very legible script.

Your benefits with MultiMark

- Firm hold and durable printing
- Continuous strips save installation time
- Easy mounting thanks to an innovative composite material
- Large label field for optimal legibility
- High flexibility thanks to manufacturer independence

General ordering data

| | | |
|------------|----------------------------|---|
| Type | WS 8/6 MM WS | Version |
| Order No. | 2007160000 | WS, Terminal marker, 8 x 6 mm, Weidmueller, white |
| GTIN (EAN) | 4050118391879 | |
| Qty. | 600 ST | |

| | | |
|------------|----------------------------|---|
| Type | WS 8/6 MM BP WS | Version |
| Order No. | 2619820000 | WS, Terminal marker, 8 x 6 mm, Weidmueller, white |
| GTIN (EAN) | 4050118626261 | |
| Qty. | 6000 ST | |

AAP11 6/6X1.5 LO-LI BL/OR

Weidmüller Interface GmbH & Co. KG

Klingenbergstraße 26

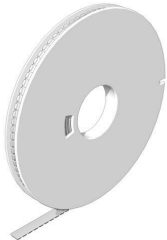
D-32758 Detmold

Germany

www.weidmueller.com

Accessories

WS 8/5



WS/ DEK

MultiMark terminal markers use an innovative composite material made from two components. The hard base contour of the marker snaps securely into the connector. The elastic surface finish makes the marker easy to mount. This specially punched material enables the strips to be stretched to accommodate the slight variations in spacing that tend to add up, especially with long terminal blocks. Another advantage: the excellent printability of the surface material guarantees durable and wear-resistant labelling. A print resolution of 300 dpi also produces a very legible script.

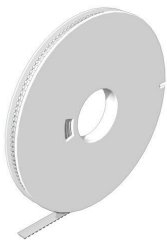
Your benefits with MultiMark

- Firm hold and durable printing
- Continuous strips save installation time
- Easy mounting thanks to an innovative composite material
- Large label field for optimal legibility
- High flexibility thanks to manufacturer independence

General ordering data

| | | |
|------------|----------------------------|---|
| Type | WS 8/5 MM WS | Version |
| Order No. | 2007150000 | WS, Terminal marker, 8 x 5 mm, Weidmueller, white |
| GTIN (EAN) | 4050118392029 | |
| Qty. | 800 ST | |
| Type | WS 8/5 MM BP WS | Version |
| Order No. | 2619810000 | WS, Terminal marker, 8 x 5 mm, Weidmueller, white |
| GTIN (EAN) | 4050118626278 | |
| Qty. | 8000 ST | |

WS 8/3.5



WS/ DEK

MultiMark terminal markers use an innovative composite material made from two components. The hard base contour of the marker snaps securely into the connector. The elastic surface finish makes the marker easy to mount. This specially punched material enables the strips to be stretched to accommodate the slight variations in spacing that tend to add up, especially with long terminal blocks. Another advantage: the excellent printability of the surface material guarantees durable and wear-resistant labelling. A print resolution of 300 dpi also produces a very legible script.

Your benefits with MultiMark

- Firm hold and durable printing
- Continuous strips save installation time
- Easy mounting thanks to an innovative composite material
- Large label field for optimal legibility
- High flexibility thanks to manufacturer independence

AAP11 6/6X1.5 LO-LI BL/OR

Weidmüller Interface GmbH & Co. KG

Klingenbergstraße 26

D-32758 Detmold

Germany

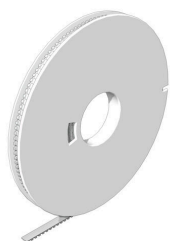
www.weidmueller.com

Accessories

General ordering data

| | | |
|------------|----------------------------|---|
| Type | WS 8/3.5 MM WS | Version |
| Order No. | 2007140000 | WS, Terminal marker, 8 x 3.5 mm, Weidmueller, white |
| GTIN (EAN) | 4050118391893 | |
| Qty. | 1000 ST | |
| Type | WS 8/3.5 MM BP WS | Version |
| Order No. | 2619800000 | WS, Terminal marker, 8 x 3.5 mm, Weidmueller, white |
| GTIN (EAN) | 4050118626285 | |
| Qty. | 11000 ST | |

DEK 5/3.5



WS/ DEK

MultiMark terminal markers use an innovative composite material made from two components. The hard base contour of the marker snaps securely into the connector. The elastic surface finish makes the marker easy to mount. This specially punched material enables the strips to be stretched to accommodate the slight variations in spacing that tend to add up, especially with long terminal blocks. Another advantage: the excellent printability of the surface material guarantees durable and wear-resistant labelling. A print resolution of 300 dpi also produces a very legible script.

Your benefits with MultiMark

- Firm hold and durable printing
- Continuous strips save installation time
- Easy mounting thanks to an innovative composite material
- Large label field for optimal legibility
- High flexibility thanks to manufacturer independence

General ordering data

| | | |
|------------|----------------------------|--|
| Type | DEK 5/3.5 MM BP WS | Version |
| Order No. | 2619760000 | Dekafix, Terminal marker, 5 x 3.5 mm, Weidmueller, white |
| GTIN (EAN) | 4050118626322 | |
| Qty. | 15000 ST | |
| Type | DEK 5/3.5 MM WS | Version |
| Order No. | 2007100000 | Dekafix, Terminal marker, 5 x 3.5 mm, Weidmueller, white |
| GTIN (EAN) | 4050118391992 | |
| Qty. | 1000 ST | |

AAP11 6/6X1.5 LO-LI BL/OR

Weidmüller Interface GmbH & Co. KG

Klingenbergstraße 26

D-32758 Detmold

Germany

www.weidmueller.com

Accessories

DEK 5/5



WS/ DEK

MultiMark terminal markers use an innovative composite material made from two components. The hard base contour of the marker snaps securely into the connector. The elastic surface finish makes the marker easy to mount. This specially punched material enables the strips to be stretched to accommodate the slight variations in spacing that tend to add up, especially with long terminal blocks. Another advantage: the excellent printability of the surface material guarantees durable and wear-resistant labelling. A print resolution of 300 dpi also produces a very legible script.

Your benefits with MultiMark

- Firm hold and durable printing
- Continuous strips save installation time
- Easy mounting thanks to an innovative composite material
- Large label field for optimal legibility
- High flexibility thanks to manufacturer independence

General ordering data

| | | |
|------------|----------------------------|--|
| Type | DEK 5/5 MM BP WS | Version |
| Order No. | 2619770000 | Dekafix, Terminal marker, 5 x 5 mm, Weidmueller, white |
| GTIN (EAN) | 4050118626315 | |
| Qty. | 10000 ST | |
| Type | DEK 5/5 MM WS | Version |
| Order No. | 2007110000 | Dekafix, Terminal marker, 5 x 5 mm, Weidmueller, white |
| GTIN (EAN) | 4050118391862 | |
| Qty. | 800 ST | |

DEK 5/6



WS/ DEK

MultiMark terminal markers use an innovative composite material made from two components. The hard base contour of the marker snaps securely into the connector. The elastic surface finish makes the marker easy to mount. This specially punched material enables the strips to be stretched to accommodate the slight variations in spacing that tend to add up, especially with long terminal blocks. Another advantage: the excellent printability of the surface material guarantees durable and wear-resistant labelling. A print resolution of 300 dpi also produces a very legible script.

Your benefits with MultiMark

- Firm hold and durable printing
- Continuous strips save installation time
- Easy mounting thanks to an innovative composite material
- Large label field for optimal legibility
- High flexibility thanks to manufacturer independence

AAP11 6/6X1.5 LO-LI BL/OR

Weidmüller Interface GmbH & Co. KG

Klingenbergstraße 26

D-32758 Detmold

Germany

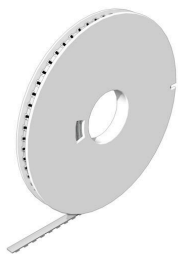
www.weidmueller.com

Accessories

General ordering data

| | | |
|------------|----------------------------|--|
| Type | DEK 5/6 MM BP WS | Version |
| Order No. | 2619780000 | Dekafix, Terminal marker, 5 x 6 mm, Weidmueller, white |
| GTIN (EAN) | 4050118626308 | |
| Qty. | 9000 ST | |
| Type | DEK 5/6 MM WS | Version |
| Order No. | 2007120000 | Dekafix, Terminal marker, 5 x 6 mm, Weidmueller, white |
| GTIN (EAN) | 4050118392104 | |
| Qty. | 600 ST | |

DEK 5/7.5



WS/ DEK

MultiMark terminal markers use an innovative composite material made from two components. The hard base contour of the marker snaps securely into the connector. The elastic surface finish makes the marker easy to mount. This specially punched material enables the strips to be stretched to accommodate the slight variations in spacing that tend to add up, especially with long terminal blocks. Another advantage: the excellent printability of the surface material guarantees durable and wear-resistant labelling. A print resolution of 300 dpi also produces a very legible script.

Your benefits with MultiMark

- Firm hold and durable printing
- Continuous strips save installation time
- Easy mounting thanks to an innovative composite material
- Large label field for optimal legibility
- High flexibility thanks to manufacturer independence

General ordering data

| | | |
|------------|----------------------------|--|
| Type | DEK 5/7.5 MM WS | Version |
| Order No. | 2619920000 | Dekafix, Terminal marker, 5 x 7.5 mm, Weidmueller, white |
| GTIN (EAN) | 4050118626162 | |
| Qty. | 500 ST | |

AAP11 6/6X1.5 LO-LI BL/OR
Weidmüller Interface GmbH & Co. KG

Klingenbergstraße 26

D-32758 Detmold

Germany

www.weidmueller.com
Accessories
DEK 5/8

WS/ DEK

MultiMark terminal markers use an innovative composite material made from two components. The hard base contour of the marker snaps securely into the connector. The elastic surface finish makes the marker easy to mount. This specially punched material enables the strips to be stretched to accommodate the slight variations in spacing that tend to add up, especially with long terminal blocks. Another advantage: the excellent printability of the surface material guarantees durable and wear-resistant labelling. A print resolution of 300 dpi also produces a very legible script.

Your benefits with MultiMark

- Firm hold and durable printing
- Continuous strips save installation time
- Easy mounting thanks to an innovative composite material
- Large label field for optimal legibility
- High flexibility thanks to manufacturer independence

General ordering data

| | | |
|------------|----------------------------|--|
| Type | DEK-A 5/8 MM WS | Version |
| Order No. | 2448860000 | Dekafix, Terminal marker, 5 x 8.1 mm, Weidmueller, white |
| GTIN (EAN) | 4050118462968 | |
| Qty. | 500 ST | |

Accessories


Accessories for testing and measuring equipment

General ordering data

| | | |
|------------|----------------------------|------------|
| Type | ZUB MULTIMETER | Version |
| Order No. | 9205270000 | Multimeter |
| GTIN (EAN) | 4032248723522 | |
| Qty. | 1 ST | |

AAP11 6/6X1.5 LO-LI BL/OR

Weidmüller Interface GmbH & Co. KG

Klingenbergstraße 26

D-32758 Detmold

Germany

www.weidmueller.com

Accessories

6mm² to 1.5mm²

The unique modular concept can be tailored to every type of machine. The potential distribution terminal blocks AAP are successful thanks to their uniform design with two possible constructions – alternating or grouped. In the grouped structure of the control voltage distribution, the potentials are located on different terminal blocks and thus form entire potential blocks.

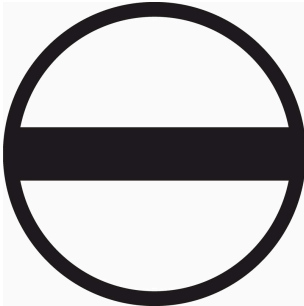
General ordering data

| | | |
|------------|----------------------------|---|
| Type | AAP11 1.5 LI WT | Version |
| Order No. | 2683440000 | Modular distribution terminals, PUSH IN, 1.5 mm ² , 500 V, 17.5 A, |
| GTIN (EAN) | 4064675008316 | dark beige, beige |
| Qty. | 50 ST | |
| Type | AAP11 1.5 LI BL | Version |
| Order No. | 1988170000 | Modular distribution terminals, PUSH IN, 1.5 mm ² , 500 V, 17.5 A, |
| GTIN (EAN) | 4050118372922 | dark beige |
| Qty. | 50 ST | |
| Type | AAP11 1.5 LI BL/OR | Version |
| Order No. | 2522870000 | Modular distribution terminals, PUSH IN, 1.5 mm ² , 500 V, 17.5 A, |
| GTIN (EAN) | 4050118554908 | blue |
| Qty. | 50 ST | |
| Type | AAP11 1.5 LI DL BL | Version |
| Order No. | 2675360000 | Modular distribution terminals, PUSH IN, 1.5 mm ² , 500 V, 17.5 A, |
| GTIN (EAN) | 4050118733594 | dark beige |
| Qty. | 50 ST | |
| Type | AAP11 1.5 LI DL BL/OR | Version |
| Order No. | 2675370000 | Modular distribution terminals, PUSH IN, 1.5 mm ² , 500 V, 17.5 A, |
| GTIN (EAN) | 4050118733587 | blue |
| Qty. | 50 ST | |
| Type | AAP11 1.5 LI DL OR | Version |
| Order No. | 2675350000 | Modular distribution terminals, PUSH IN, 1.5 mm ² , 500 V, 17.5 A, |
| GTIN (EAN) | 4050118733907 | dark beige |
| Qty. | 50 ST | |
| Type | AAP11 1.5 LI DL RD | Version |
| Order No. | 2675340000 | Modular distribution terminals, PUSH IN, 1.5 mm ² , 500 V, 17.5 A, |
| GTIN (EAN) | 4050118733570 | dark beige |
| Qty. | 50 ST | |
| Type | AAP11 1.5 LI GN/OR | Version |
| Order No. | 2614100000 | Modular distribution terminals, PUSH IN, 1.5 mm ² , 500 V, 17.5 A, |
| GTIN (EAN) | 4050118618013 | green |
| Qty. | 50 ST | |
| Type | AAP11 1.5 LI OR | Version |
| Order No. | 2503910000 | Modular distribution terminals, PUSH IN, 1.5 mm ² , 500 V, 17.5 A, |
| GTIN (EAN) | 4050118517583 | dark beige |
| Qty. | 50 ST | |
| Type | AAP11 1.5 LI RD | Version |
| Order No. | 1988160000 | Modular distribution terminals, PUSH IN, 1.5 mm ² , 500 V, 17.5 A, |
| GTIN (EAN) | 4050118372939 | dark beige |
| Qty. | 50 ST | |

AAP11 6/6X1.5 LO-LI BL/OR

Weidmüller Interface GmbH & Co. KG
 Klingenbergstraße 26
 D-32758 Detmold
 Germany

www.weidmueller.com

Accessories
Slotted screwdriver


Slotted screwdriver with rounded blade SD DIN 5265, ISO 2380/2, output to DIN 5264, ISO 2380/1. ChromTop tip, SoftFinish grip

General ordering data

| | | |
|------------|----------------------------|--|
| Type | SDS 0.4X2.0X60 | Version |
| Order No. | 2749260000 | Screwdriver, Blade width (B): 2 mm, Blade length: 60 mm, Blade |
| GTIN (EAN) | 4050118895537 | thickness (A): 0.4 mm |
| Qty. | 1 ST | |

Testadapter and testsockets


Test adapters and test plugs are used for the electrical connection between terminal blocks and the test equipment. In this way, an electrical contact can be established in the wired state and measurements can be done easily.

General ordering data

| | | |
|------------|----------------------------|---|
| Type | FZS 2/4 RT/80 SAKT4 | Version |
| Order No. | 1276300000 | Plug (terminal), Plug-in connection, 2 mm², Number of connections: 2, |
| GTIN (EAN) | 4008190026080 | Number of poles: 1, Width: 9 mm |
| Qty. | 20 ST | |